

Made in the United States of America

Conductive D-Type Connector Cover Features:

Conductive Composite

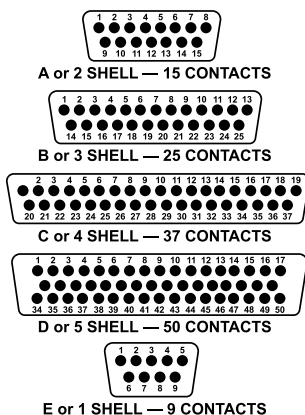
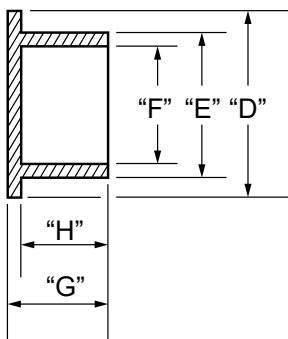
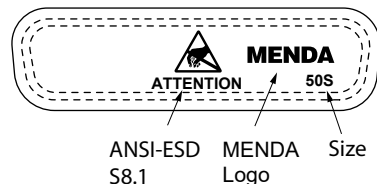
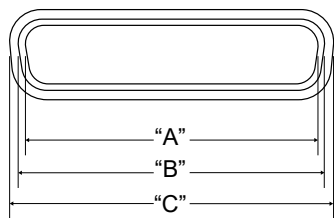
Permanently volume conductive and free of carbon black particulate. The connector covers do not leave black marks and are more suited to clean situations. Meets the requirements of NASM5501 31/32.

Noncorrosive

Connector covers are noncorrosive and produce no visible corrosion when tested to Federal Test Method 101C using Kovar test plates.

Conformability

The material used in the covers was selected for its resilience. Properly sized, the covers provide a snug, secure fit. This helps keep connectors clean and prevents the cover from accidentally falling off.



Chemical Susceptibility*	Reactions
Dilute Acids	Slight Attack
Dilute Alkalines	Slight Attack
Concentrated Acids	Slight Attack
Concentrated Alkalines	Slight Attack
Methanol, Ethanol, and Isopropanol	Resistant
Hydrocarbons	Slight Attack
Ketones	Slight Attack
Oil and Gasoline	Slight Attack

*ASTM F925

Material Properties	Test Method	Typical Value
Resistivity	ASTM D991	<10 ⁵ ohm-cm
Contact Corrosivity	FTM 101C Method 3005 (Kovar plate)	Pass
Elongation	ASTM D638	24%
Tensile	ASTM D638	2700 psi
Vicat Softening	ASTM MD 1525	85° C
Outgassing	ASTM E595	Pass
Silicone		Silicone free
Maximum Temp. Exposure		180° F

Part No.	Size	Contacts	Connector Type	Shell Size	"A"	"B"	"C"	"D"	"E"	"F"	"G"	"H"
35780	15P	15	Pin	A/2	1.040"	1.107"	1.177"	.512"	.436"	.369"	.280"	.240"
35781	15S	15	Socket	A/2	.955"	1.022"	1.122"	.462"	.362"	.295"	.280"	.240"
35782	25P	25	Pin	B/3	1.586"	1.635"	1.735"	.530"	.430"	.363"	.280"	.240"
35783	25S	25	Socket	B/3	1.495"	1.562"	1.662"	.462"	.362"	.295"	.280"	.240"
35784	37P	37	Pin	C/4	2.216"	2.283"	2.383"	.530"	.430"	.363"	.280"	.240"
35785	37S	37	Socket	C/4	2.143"	2.210"	2.310"	.462"	.362"	.295"	.280"	.240"
35786	50P	50	Pin	D/5	2.112"	2.179"	2.279"	.636"	.536"	.469"	.280"	.240"
35787	50S	50	Socket	D/5	2.049"	2.116"	2.216"	.574"	.474"	.407"	.280"	.240"
35788	9P	9	Pin	E/1	.708"	.775"	.849"	.512"	.434"	.367"	.280"	.240"
35789	9S	9	Socket	E/1	.627"	.694"	.794"	.462"	.362"	.295"	.280"	.240"

Packaged 100/pack, 10 packs/case
NSN No. & MIL Spec located [here](#)

Unless otherwise noted, tolerance ± 10%

Specifications and procedures subject to change without notice.

"It should be understood that any object, item, material or person could be a source of static electricity in the work environment. Removal of unnecessary nonconductors, replacing nonconductive materials with dissipative or conductive materials and grounding all conductors are the principle methods of controlling static electricity in the workplace, regardless of the activity." [ESD Handbook ESD TR20.20; section 2.4 Sources of Static Electricity]

CONDUCTIVE D-TYPE CONNECTOR COVERS

3651 WALNUT AVENUE, CHINO, CA 91710
PHONE: (909) 627-2453
WEBSITE: MendaPump.com

DRAWING NUMBER
35780

DATE:
September
2023

MENDA

Mouser Electronics

Authorized Distributor

Click to View Pricing, Inventory, Delivery & Lifecycle Information:

[Menda:](#)

[35789](#) [35787](#) [35785](#) [35780](#) [35781](#) [35782](#) [35783](#) [35788](#) [35786](#) [35784](#)