



ENGLISH

Datasheet

Stock No: 453-375

RS Pro Panel Mount XLR Connector, Female, Tin Plated Contacts

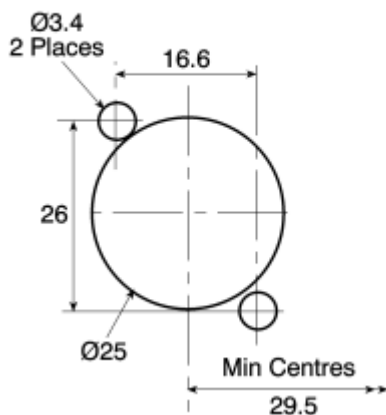


Product Details

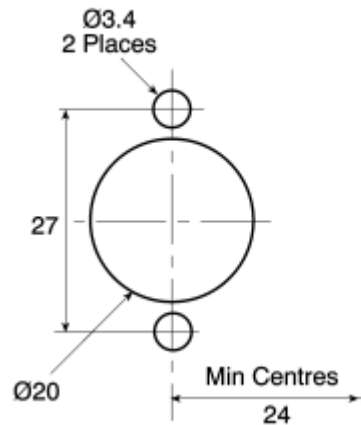
Straight Cable Mount Connectors

Industry standard 3 way cable mount connectors. Precision construction assures low noise and high reliability in low level circuits. Mated connectors are secured by a latch which prevents accidental disengagement. Will mate with other 3 way AXR/XLR compatible connectors. They feature the uniquely designed 'jaw' cable retention system and have tin plated phosphor bronze contacts. Max. working voltage 120V a.c. and contact rating 15A.

Cut-out for Panel Socket



Cut-out for Panel Plug



Warning

Not to be used as mains connectors



ENGLISH

Specifications:

Gender	Female
Mounting Type	Panel Mount
Contact Plating	Tin
Housing Material	Zinc Alloy
Termination Method	Solder
Current Rating	15A
Contact Material	Phosphor Bronze
Minimum Operating Temperature	-25°C
Maximum Operating Temperature	+75°C