

MICRO SWITCH

FREEPORT ILLINOIS, U.S.A
A DIVISION OF HONEYWELL
FED. MFG. CODE 91929

SWITCH - BASIC

CATALOG LISTING

BZ-2RW822244-A2

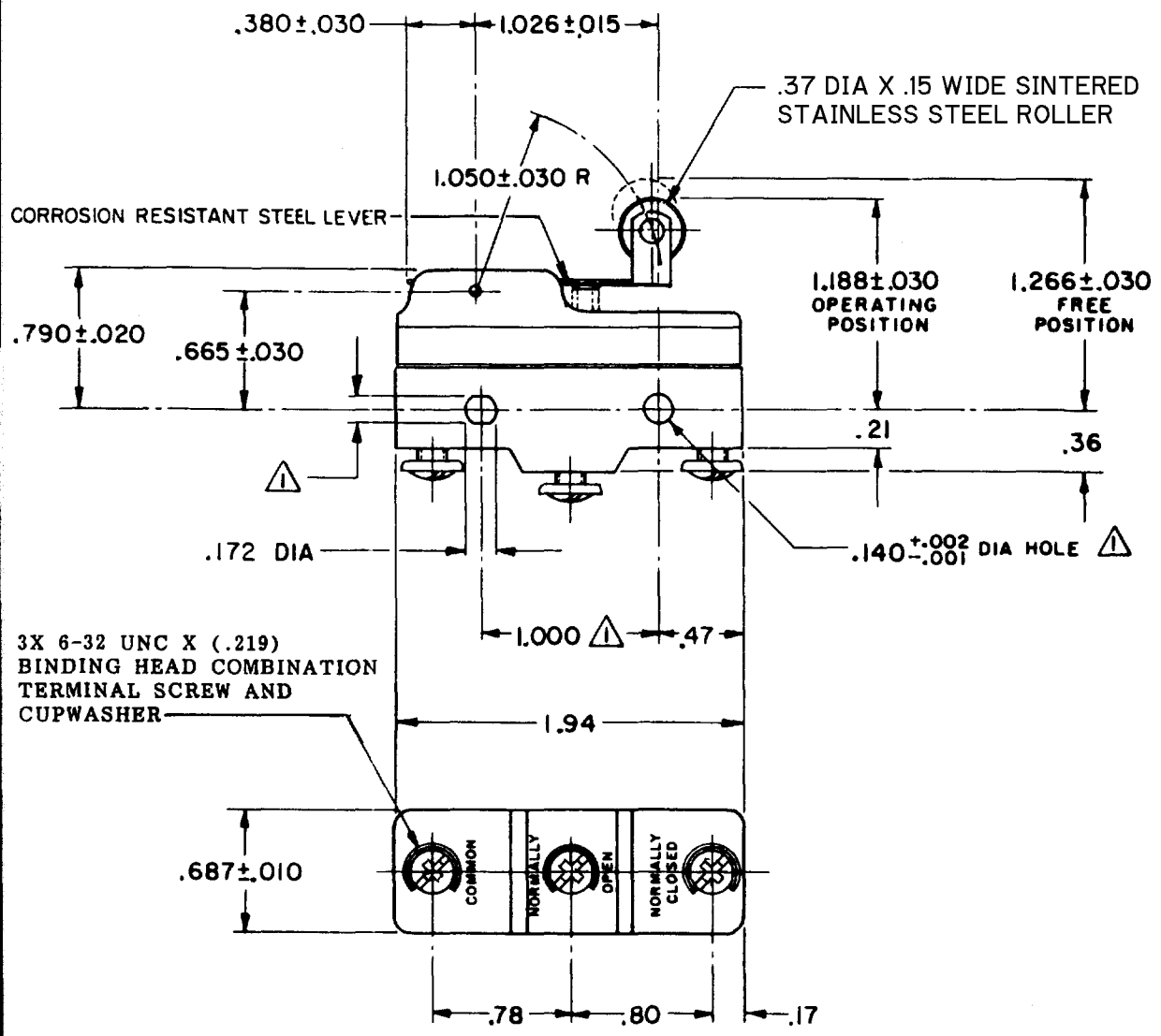
M BZ-2RW822244-A2

PAGE 1 OF 1

REPLACES PR-3708

DRAWING NUMBER

ISSUE 6



NOTES
 ▲ - MOUNTING HOLES WILL ACCEPT PINS OR SCREWS OF .139 MAX DIA ON 1.000 ± .002 CENTERS
 2 - SWITCH WILL WITHSTAND TEMPERATURE OF 400° F FOR 100 HOURS

THIS DRAWING COVERS A PROPRIETARY ITEM AND IS THE PROPERTY OF MICRO SWITCH, A DIVISION OF HONEYWELL. THIS DRAWING IS NOT TO BE COPIED OR USED WITHOUT THE APPROVAL OF MICRO SWITCH.

CHARACTERISTICS

OPERATING FORCE - - - - - 6 OZ MAX
 RELEASE FORCE - - - - - 1 1/2 OZ MIN
 DIFFERENTIAL TRAVEL - - - - .003-.020
 OVERTRAVEL - - - - - .094 MIN

ELECTRICAL DATA

CONTACT ARRANGEMENT
 S P D T
 L35 5A 125, 250 OR 480 VAC
 1/2A 125 VDC, 1/4A 250 VDC
 L288

SCALE FULL

DO NOT SCALE PRINT
 UNLESS OTHERWISE NOTED
 DIMENSIONS ARE IN INCHES
TOLERANCES ARE
 ONE PLACE (.0) ± .030
 TWO PLACE (.00) ± .015
 THREE PLACE (.000) ± .005
 ANGLES ±
 WEIGHT .076 LB

REVISIONS
 A C032760 PR-3708 21 NOV 73
 B CO-7018-F 6 JAN 92
 C CO-73287-J 22 NOV 93
 D CO-84680-C 27 AUG 97
 E C093346 28 AUG 98
 CHECK 27 NOV 73
 CHECK LSD
 DRAWN
 FORMTEK