

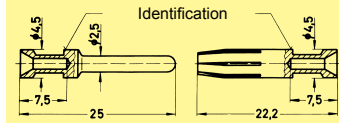
Crimp Contacts

Han E® contacts (16 A)

for Han E®, Han® EE,
Han® Q, Han-Modular®,
Han-Com®, Han-Brid®,
Han Hv E®

Part-Number		Identifica- tion	Wire gauge	
Male contact	Female contact		mm ²	AWG
09 33 000 6121	09 33 000 6220	no groove	0.5	20
09 33 000 6114	09 33 000 6214	1 groove*	0.75	18
09 33 000 6105	09 33 000 6205	1 groove	1	18
09 33 000 6104	09 33 000 6204	2 grooves	1.5	16
09 33 000 6102	09 33 000 6202	3 grooves	2.5	14
09 33 000 6107	09 33 000 6207	no groove	4	12

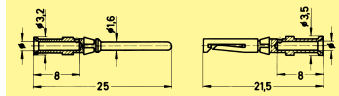
* on the back crimp collar



Han D® contacts (10 A)

for Han D®, Han DD®,
Han-Modular®, Han-Com®

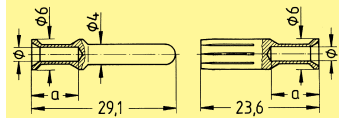
Part-Number		Ø mm	Wire gauge	
Male contact	Female contact		mm ²	AWG
09 15 000 6104	09 15 000 6204	0.8	0.14-0.37	26 - 22
09 15 000 6103	09 15 000 6203	1.1	0.5	20
09 15 000 6105	09 15 000 6205	1.3	0.75	18
09 15 000 6102	09 15 000 6202	1.45	1	18
09 15 000 6101	09 15 000 6201	1.75	1.5	16
09 15 000 6106	09 15 000 6206	2.25	2.5	14



Han® C contacts (40 A)

for Han-Modular®

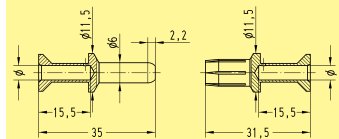
Part-Number		Ø mm	Wire gauge	
Male contact	Female contact		mm ²	AWG
09 32 000 6104	09 32 000 6204	1.75	1.5	16
09 32 000 6105	09 32 000 6205	2.25	2.5	14
09 32 000 6107	09 32 000 6207	2.85	4	12
09 32 000 6108	09 32 000 6208	3.5	6	10



Crimp contacts (70 A)

for Han-Modular®

Part-Number		Ø mm	Wire gauge	
Male contact	Female contact		mm ²	AWG
09 11 000 6131	09 11 000 6231	10	4.3	
09 11 000 6132	09 11 000 6232	16	5.5	
09 11 000 6133	09 11 000 6233	25	7.0	



Crimp contacts (100 A)

for Han-Modular®

Part-Number		Ø mm	Wire gauge	
Male contact	Female contact		mm ²	AWG
09 11 000 6114	09 11 000 6214	10	4,3	
09 11 000 6116	09 11 000 6216	16	5,5	
09 11 000 6125	09 11 000 6225	25	7,0	
09 11 000 6135	09 11 000 6235	35	8,2	

