

Protection class up to IP 65 for version I when using the sealing kit.

### VERSION I

Without battery compartment.

### VERSION II

With battery compartment \* for 1 x 9 V flat battery (PP3).

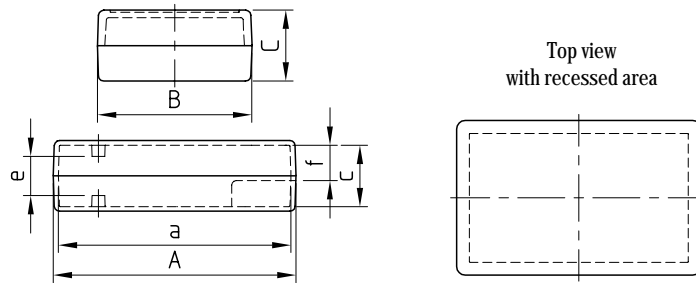
### VERSION III

With battery compartment \* for 4 x 1.5 V mignon cells (AA) or 2 x 9 V flat batteries (PP3).

### VERSION IV

With battery compartment \* for 1 x 9 V flat battery (PP3) or 2 1.5 V mignon cells (AA).

Battery compartments are accessible from the outside.



### DESIGN

Two-part case with closed front and rear.

A high degree of rigidity and tight fitting due to tongue-and groove joint.

Some versions are available with a top recessed area.

### MATERIAL

High-impact polystyrene (UL 94 HB).  
Also available in other materials on request. Please refer to the specifications on pages 221-223.

### STANDARD COLOUR

Off-white, RAL 9002.

### SPECIAL COLOURS

Any desired colour.

Part No.	Shell-type case	Outside dim.			Inside dimensions						Spacings						Dim. (LxWxH) recessed area	Version		
		A	B	C	a	b	c	d	e	f	g	h	k	l	m	n			o	t
A 94 04 331	G 85	85	45	22	79	39	18	22	8	-	17	-	50	29	-	-	-	-	-	-
A 94 04 341	G 85	85	45	33	78	38	29	22	20	-	17	-	50	29	-	-	-	-	-	-
A 94 04 441	G 85	85	45	45	78	38	41	22	31	-	17	-	50	29	-	-	-	-	-	-
A 94 06 331	G 110	114	72	33	104	62	27	43	17	-	21	-	76	32	30	30	30	-	-	-
A 94 06 351	G 110	114	72	33,5	104	62	27	43	17	-	21	-	76	32	30	30	30	-	102 x 60 x 1	-
A 94 06 341	G 110	114	72	45	104	62	39	43	29	-	21	-	76	32	30	30	30	-	-	-
A 94 06 441	G 110	114	72	57	104	62	51	43	41	-	21	-	76	32	30	30	30	-	-	-
A 94 06 332	G 110	114	72	33	104	62	27	43	17	8	21	46	-	32	30	30	-	30	-	-
A 94 06 352	G 110	114	72	33,5	104	62	27	43	17	8	21	46	-	32	30	30	-	30	-	-
A 94 06 342	G 110	114	72	45	104	62	39	43	29	20	21	46	-	32	30	30	-	30	-	-
A 94 08 331	G 155	158	95	33	149	85	27	63	16	-	20	60	120	50	38	42	42	-	-	-
A 94 08 351	G 155	158	95	33,5	149	85	27	63	16	-	20	60	120	50	38	42	42	-	144,5 x 81,5 x 1	-
A 94 08 341	G 155	158	95	45	149	85	39	63	28	-	20	60	120	50	38	42	42	-	-	-
A 94 08 441	G 155	158	95	57	149	85	51	63	40	-	21	60	120	50	38	42	42	-	-	-
A 94 08 337	G 155	158	95	33	149	85	27	63	16	7	20	60	-	50	38	42	-	61	-	-
A 94 08 357	G 155	158	95	33,5	149	85	27	63	16	7	20	60	-	50	38	42	-	61	144,5 x 81,5 x 1	-
A 94 08 347	G 155	158	95	45	149	85	39	63	28	19	20	60	-	50	38	42	-	61	-	-
A 94 08 335	G 155	158	95	33	149	85	27	63	16	7	20	60	90	50	38	42	-	31	-	-
A 94 08 355	G 155	158	95	33,5	149	85	27	63	16	7	20	60	90	50	38	42	-	31	144,5 x 81,5 x 1	-
A 94 08 345	G 155	158	95	45	149	85	39	63	28	19	20	60	90	50	38	42	-	31	-	-
A 94 13 331	G 190	190	138	45	182	130	39	101	28	-	19	53	154	89	34	42	42	-	-	-
A 94 13 351	G 190	190	138	45,5	182	130	39	101	28	-	19	53	154	89	34	42	42	-	172 x 120 x 1	-
A 94 13 341	G 190	190	138	68	180	128	62	101	51	-	19	53	154	89	34	42	42	-	-	-
A 94 13 441	G 190	190	138	91	180	128	85	100	74	-	19	53	154	89	34	42	42	-	-	-
A 94 13 337	G 190	190	138	45	182	130	39	101	28	19	19	53	154	89	34	42	42	61	-	-
A 94 13 357	G 190	190	138	45,5	182	130	39	101	28	19	19	53	154	89	34	42	42	61	172 x 120 x 1	-
A 94 13 347	G 190	190	138	68	180	128	62	101	51	42	19	53	154	89	34	42	42	61	-	-

# SHELL-TYPE CASES

## G 85, 110, 155, 190



Closed front and rear

### ASSEMBLY

Case parts are assembled by means of four self-tapping screws.

Fast and easy to equip.

Guide ridges for vertical mounting of partitions and PCBs. Fastening pillars in top and base for horizontal mounting of PCBs.

Self-tapping screws for PCB fixing see page 103.



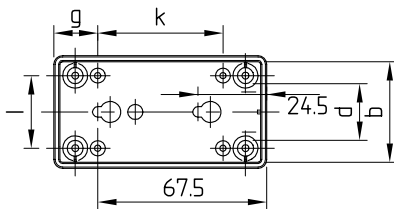
### ACCESSORIES

- Contact strips to connect shielded case shells
- Sealing kit
- Plug-in contact
- Set of battery clips
- Small cover plates
- Rubber feet

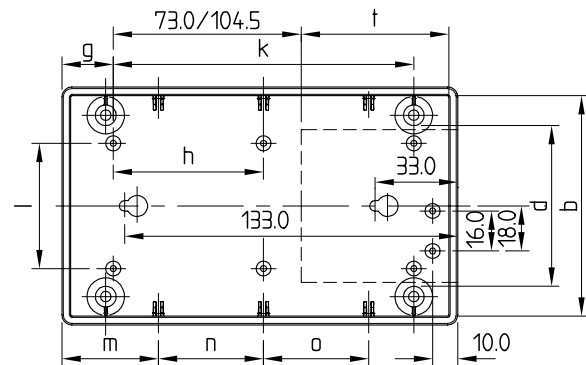
For accessories see pages 102 and 103.

Same internal dimensions and spacings for top and base, with the exception, that the tops are without knock-out holes for wall-mounting.

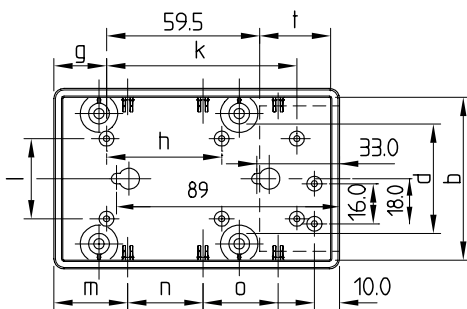
G 85



G 155



G 110



G 190

