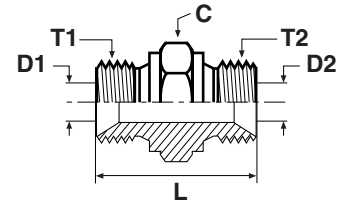


Adapters

HMK4 Union

BSPP 60° Cone end (ISO 8434-6)



Thread BSPP T1	Thread BSPP T2	C mm	D1 mm	D2 mm	L mm	Weight (steel) g/1 piece	Adapter Steel	Adapter Stainless Steel	PN (bar)
1/8	1/8	14	4	4	24	15	2HMK4S	2HMK4SS	350
1/4	1/8	19	5	4	28	29	4-2HMK4S	4-2HMK4SS	350
1/4	1/4	19	5	5	32	35	4HMK4S	4HMK4SS	350
3/8	1/4	22	8	5	33	46	6-4HMK4S	6-4HMK4SS	350
3/8	3/8	22	8	8	35	51	6HMK4S	6HMK4SS	350
1/2	1/4	27	11	5	37	70	8-4HMK4S	8-4HMK4SS	200
1/2	3/8	27	11	8	38	76	8-6HMK4S	8-6HMK4SS	200
1/2	1/2	27	11	11	41	85	8HMK4S	8HMK4SS	200
5/8	1/2	30	14	11	43	106	10-8HMK4S	10-8HMK4SS	200
5/8	5/8	30	14	14	45	112	10HMK4S	10HMK4SS	200
3/4	1/4	32	17	5	39	92	12-4HMK4S	12-4HMK4SS	200
3/4	3/8	32	17	8	41	107	12-6HMK4S	12-6HMK4SS	200
3/4	1/2	32	17	11	43	111	12-8HMK4S	12-8HMK4SS	200
3/4	5/8	32	17	14	45	106	12-10HMK4S	12-10HMK4SS	200
3/4	3/4	32	17	17	45	124	12HMK4S	12HMK4SS	200
1	1/2	41	22	11	47	175	16-8HMK4S	16-8HMK4SS	120
1	5/8	41	22	14	49	188	16-10HMK4S	16-10HMK4SS	120
1	3/4	41	22	17	49	190	16-12HMK4S	16-12HMK4SS	120
1	1	41	22	22	52	199	16HMK4S	16HMK4SS	120
1 1/4	3/4	50	29	17	57	259	20-12HMK4S	20-12HMK4SS	105
1 1/4	1	50	29	22	60	383	20-16HMK4S	20-16HMK4SS	105
1 1/4	1 1/4	50	29	29	61	405	20HMK4S	20HMK4SS	105
1 1/2	1	55	33	22	64	417	24-16HMK4S	24-16HMK4SS	105
1 1/2	1 1/4	55	33	29	65	410	24-20HMK4S	24-20HMK4SS	105
1 1/2	1 1/2	55	33	33	67	534	24HMK4S	24HMK4SS	105
2	1 1/2	70	46	33	73	660	32-24HMK4S	32-24HMK4SS	70
2	2	70	46	46	76	719	32HMK4S	32HMK4SS	70

Order codes shown are part of our current manufacturing programme.
Imperial and metric parts may vary in hexagon dimensions.

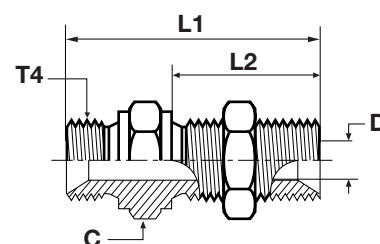
$$\frac{\text{PN (bar)}}{10} = \text{PN (MPa)}$$

Pressure ratings – PN shown, apply to Steel and Stainless Steel versions of the product.

WMK4WL4NM Bulkhead union

BSPP 60° Cone end (ISO 8434-6)

* Supplied with locknut



Thread BSPP T4	L1 mm	L2 mm	C mm	D mm	Weight (steel) g/1 piece	Adapter Steel	Adapter Stainless Steel	PN (bar)
1/4	49	28	19	5	57	4WMK4WL4NMS	4WMK4WL4NMSS	350
3/8	55	32	22	8	84	6WMK4WL4NMS	6WMK4WL4NMSS	350
1/2	62	35	27	11	122	8WMK4WL4NMS	8WMK4WL4NMSS	200
5/8	64	35	30	14	146	10WMK4WL4NMS	10WMK4WL4NMSS	200
3/4	67	38	32	17	209	12WMK4WL4NMS	12WMK4WL4NMSS	200
1	74	41	41	22	328	16WMK4WL4NMS	16WMK4WL4NMSS	120
1 1/4	85	44	50	29	507	20WMK4WL4NMS	20WMK4WL4NMSS	105
1 1/2	93	48	55	33	609	24WMK4WL4NMS	24WMK4WL4NMSS	105

Order codes shown are part of our current manufacturing programme.
Imperial and metric parts may vary in hexagon dimensions.
For the version without locknut, please delete "WL4NM" (e.g. 16WMK4)

$$\frac{\text{PN (bar)}}{10} = \text{PN (MPa)}$$

Pressure ratings – PN shown, apply to the Steel and Stainless Steel versions of the product.

Maximum bulkhead wall thickness

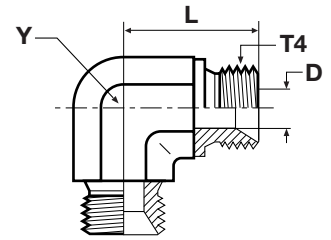
Thread BSPP	Bulkhead union Max. thickness mm
1/4	9.5
3/8	12.5
1/2	12.4
5/8	10.8
3/4	13.4
1	10.1
1 1/4	12.1
1 1/2	14.1

N

Adapters

EMK4 Union elbow

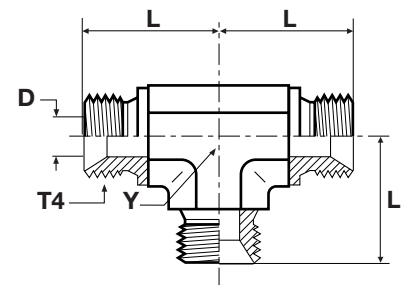
BSPP 60° Cone end (ISO 8434-6)



Thread BSPP T4	D mm	L mm	Y mm	Weight (steel) g/1 piece	Adapter Steel	Adapter Stainless Steel	PN (bar)
1/8	4	17	11	21	2EMK4S	2EMK4SS	350
1/4	5	24	14	45	4EMK4S	4EMK4SS	350
3/8	8	27	19	85	6EMK4S	6EMK4SS	350
1/2	11	32	22	123	8EMK4S	8EMK4SS	200
5/8	14	34	22	109	10EMK4S	10EMK4SS	200
3/4	17	36	27	178	12EMK4S	12EMK4SS	200
1	22	42	33	288	16EMK4S	16EMK4SS	120
1 1/4	29	48	41	512	20EMK4S	20EMK4SS	105
1 1/2	33	54	48	824	24EMK4S	24EMK4SS	105

JMK4 Union tee

BSPP 60° Cone end (ISO 8434-6)



Thread BSPP T4	D mm	L mm	Y mm	Weight (steel) g/1 piece	Adapter Steel	Adapter Stainless Steel	PN (bar)
1/8	4	17	11	33	2JMK4S	2JMK4SS	350
1/4	5	24	14	61	4JMK4S	4JMK4SS	350
3/8	8	27	19	105	6JMK4S	6JMK4SS	350
1/2	11	32	22	157	8JMK4S	8JMK4SS	200
5/8	14	34	22	145	10JMK4S	10JMK4SS	200
3/4	17	36	27	258	12JMK4S	12JMK4SS	200
1	22	42	33	591	16JMK4S	16JMK4SS	120
1 1/4	29	48	41	646	20JMK4S	20JMK4SS	105
1 1/2	33	54	48	940	24JMK4S	24JMK4SS	105

Order codes shown are part of our current manufacturing programme.
Imperial and metric parts may vary in hexagon dimensions.

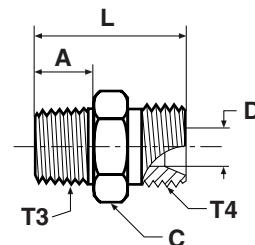
$$\frac{\text{PN (bar)}}{10} = \text{PN (MPa)}$$

Pressure ratings – PN shown, apply to Steel and Stainless Steel versions of the product.

Adapters

F3MK4 Male stud connector

BSPP 60° Cone end (ISO 8434-6) / Male BSPT thread (ISO 7)



Thread BSPP T4	Thread BSPT T3	A mm	C mm	D mm	L mm	Weight (steel) g/1 piece	Adapter Steel	Adapter Stainless Steel	PN (bar)
1/8	1/8	10	14	4	24	15	2F3MK4S	2F3MK4SS	315
1/8	1/4	15	14	4	29	28	2-4F3MK4S	2-4F3MK4SS	315
1/4	1/4	15	19	5	33	31	4-4F3MK4S	4-4F3MK4SS	315
1/4	1/8	10	19	5	29	27	4F3MK4S	4F3MK4SS	315
1/4	3/8	15	19	5	33	44	4-6F3MK4S	4-6F3MK4SS	315
3/8	3/8	15	22	8	35	52	6-6F3MK4S	6-6F3MK4SS	315
3/8	1/2	19	22	8	40	68	6-8F3MK4S	6-8F3MK4SS	160
3/8	1/4	15	22	7	35	48	6F3MK4S	6F3MK4SS	315
1/2	1/2	19	27	11	43	79	8-8F3MK4S	8-8F3MK4SS	160
1/2	3/8	15	27	11	39	68	8F3MK4S	8F3MK4SS	200
5/8	1/2	19	30	14	46	101	10F3MK4S	10F3MK4SS	200
5/8	3/4	19	30	14	46	102	10-12F3MK4S	10-12F3MK4SS	160
3/4	1/2	19	32	17	46	111	12-8F3MK4S	12-8F3MK4SS	315
3/4	3/4	19	32	17	46	126	12F3MK4S	12F3MK4SS	160
3/4	1	24	36	17	51	242	12-16F3MK4S	12-16F3MK4SS	120
1	3/4	19	41	22	50	173	16-12F3MK4S	16-12F3MK4SS	120
1	1	24	41	22	55	219	16F3MK4S	16F3MK4SS	120
1 1/4	1 1/4	25	50	29	64	337	20F3MK4S	20F3MK4SS	105
1 1/2	1 1/2	26	55	33	69	497	24F3MK4S	24F3MK4SS	105

Order codes shown are part of our current manufacturing programme.
Imperial and metric parts may vary in hexagon dimensions.

$$\frac{\text{PN (bar)}}{10} = \text{PN (MPa)}$$

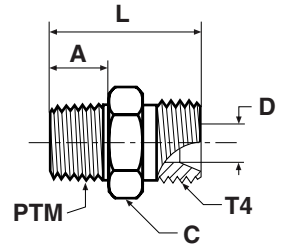
Pressure ratings – PN shown, apply to Steel and Stainless Steel versions of the product.

Adapters

FMK4 Male stud connector

BSPP 60° Cone end (ISO 8434-6) / Male NPTF* thread (SAE J476)

*Stainless Steel = NPT to prevent galling



Thread BSPP T4	Thread NPT/NPTF PTM	A mm	C mm	D mm	L mm	Weight (steel) g/1 piece	Adapter Steel	Adapter Stainless Steel	PN (bar)
1/8	1/8	10	14	4	24	17	2FMK4S	2FMK4SS	350
1/8	1/4	15	19	4	29	21	2-4FMK4S	2-4FMK4SS	350
1/4	1/8	10	19	5	29	24	4FMK4S	4FMK4SS	350
1/4	1/4	15	19	5	33	33	4-4FMK4S	4-4FMK4SS	350
1/4	3/8	15	19	5	34	41	4-6FMK4S	4-6FMK4SS	350
3/8	1/4	15	22	8	35	45	6FMK4S	6FMK4SS	350
3/8	3/8	15	2	8	35	50	6-6FMK4S	6-6FMK4SS	350
3/8	1/2	19	22	8	40	77	6-8FMK4S	6-8FMK4SS	350
1/2	3/8	15	27	11	39	48	8FMK4S	8FMK4SS	200
1/2	1/2	19	27	11	43	93	8-8FMK4S	8-8FMK4SS	200
1/2	3/4	19	27	11	44	95	8-12FMK4S	8-12FMK4SS	200
3/4	1/2	19	32	17	46	112	12-8FMK4S	12-8FMK4SS	200
3/4	3/4	19	32	17	46	124	12FMK4S	12FMK4SS	200
3/4	1	24	36	17	51	150	12-16FMK4S	12-16FMK4SS	200
1	3/4	19	41	22	50	188	16-12FMK4S	16-12FMK4SS	120
1	1	24	41	22	55	234	16FMK4S	16FMK4SS	120

Order codes shown are part of our current manufacturing programme.
Imperial and metric parts may vary in hexagon dimensions.

$$\frac{\text{PN (bar)}}{10} = \text{PN (MPa)}$$

Pressure ratings – PN shown, apply to Steel and Stainless Steel versions of the product.