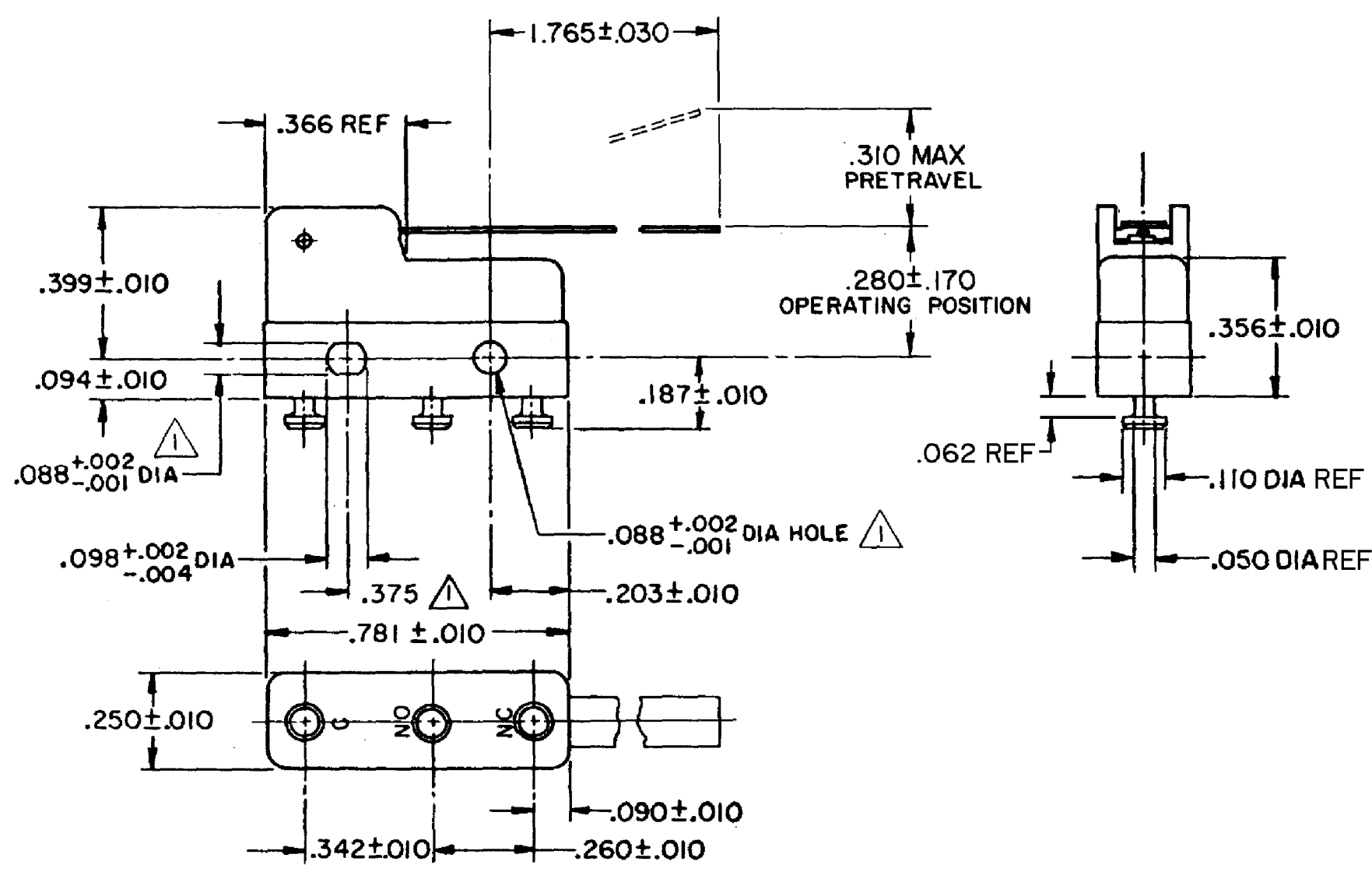
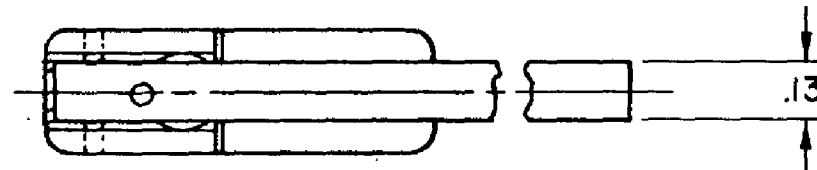


HONEYWELL  
PART NUMBER  
311SM3-T  
PRODUCT CODE  
TZA1200

| REV | DOCUMENT | CHANGED BY  | CHECK |
|-----|----------|-------------|-------|
| 6   | 0038113  | PRS 12JUN08 | BLR   |



NOTE -  
 ▲ MOUNTING HOLES WILL ACCEPT PINS OR SCREWS OF .087 MAX DIA ON .375 ± .002 CENTERS  
 2- SWITCH WILL WITHSTAND TEMPERATURE OF 250°F  
 3- TERMINALS ARE PLATED FOR SOLDERING

|             |            |
|-------------|------------|
| RELEASE NO. | SR - 11750 |
| REPLACES    | -          |

| CHARACTERISTICS     |             |
|---------------------|-------------|
| OPERATING FORCE     | 15 GRAM MAX |
| RELEASE FORCE       | 2 GRAM MIN  |
| DIFFERENTIAL TRAVEL | .110 MAX    |
| OVERTRAVEL          | .057 MIN    |

| ELECTRICAL DATA             |           |                    |
|-----------------------------|-----------|--------------------|
| CONTACT ARRANGEMENT<br>SPDT |           |                    |
| 30 VOLTS DC RATING          |           |                    |
|                             | SEA LEVEL | 50,000 FT          |
| INDUCTIVE                   | 3 AMP     | 2.5 AMP            |
| RESISTIVE                   | 5 AMP     | 5 AMP              |
| MAXIMUM INRUSH 24 AMP       |           |                    |
| APPROVALS                   | KEMA, CE  | 5A, 250V ~ T85 1E4 |
|                             | UL, CSA   | 5A, 250 VAC ~      |

|                          |         |
|--------------------------|---------|
| DESIGN UNITS:            | INCH    |
| TOLERANCES UNLESS NOTED: |         |
| NO PLACE                 | X ±     |
| ONE PLACE                | .X ±    |
| TWO PLACE                | .XX ±   |
| THREE PLACE              | .XXX ±  |
| FOUR PLACE               | .XXXX ± |
| ANGLES                   | ±       |
| THIRD ANGLE PROJECTION   |         |

|  |    |           |
|--|----|-----------|
| DRAWN  | VK | 05 NOV 07 |
| CHECK  | RJ | 05 NOV 07 |
| THIS DRAWING COVERS A PROPRIETARY ITEM AND IS THE PROPERTY OF HONEYWELL. THIS DRAWING IS NOT TO BE COPIED OR USED WITHOUT THE PERMISSION OF HONEYWELL. |    |           |
| INTERPRET PER ANSI Y14.5M-1982 OTHER HONEYWELL ENGINEERING STANDARDS MAY APPLY   |    |           |
| RASTER   |    |           |

|                         |      |                    |              |
|-------------------------|------|--------------------|--------------|
| <b>Honeywell</b>        |      |                    |              |
| TITLE<br>SWITCH - BASIC |      |                    |              |
| SIZE                    | TYPE | DRAWING NAME       | REV          |
| B                       | I    | 311SM3-T           | 6            |
| SCALE                   | -    | WEIGHT .006 LB MAX | SHEET 1 OF 1 |