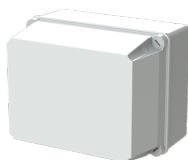


PRODUCT-DETAILS

WB1SL0820A00

Rectangular; IP44-IP55-IP65 junction boxes in thermoplastic material



General Information

| | |
|-----------------------|--|
| Extended Product Type | WB1SL0820A00 |
| Product ID | M008210000 |
| EAN | 8000126008210 |
| Catalog Description | Rectangular; IP44-IP55-IP65 junction boxes in thermoplastic material |
| Long Description | COVER W.METAL SCREWS BOX IP55:COVER W.METAL SCREWS BOX IP55 |

Technical

| | |
|--|---|
| Suitable For | IP44-IP55-IP65 junction boxes in thermoplastic material |
| Rated Insulation Voltage (U _i) | 1500 V |
| Number of Conduit Inlets | 6 |
| Cover Mounting Type | Screw |
| Mounting Type | Universal |
| Screw Type | Steel |
| Shape | Rectangular |
| Surface Finishing | Untreated |
| Material | Plastic |
| Cover Style | Blind Cover |
| Color | Grey |

Environmental

| | |
|----------------------|------|
| Degree of Protection | IP55 |
|----------------------|------|

| | |
|---|--|
| RoHS Status | Following EU Directive 2011/65/EU and Amendment 2015/863 July 22, 2019 |
| RoHS Information | 9AKK108468A2381 |
| Conflict Minerals Reporting Template (CMRT) | 9AKK108468A3363 |

Dimensions

| | |
|----------------------------|----------|
| Product Net Width | 100 mm |
| Product Net Height | 100 mm |
| Product Net Depth / Length | 80 mm |
| Product Net Weight | 0.225 kg |

Container Information

| | |
|------------------------------|---------------|
| Package Level 1 Units | box 1 piece |
| Package Level 1 Gross Weight | 287.5 g |
| Package Level 1 EAN | 8000126008210 |

Ordering

| | |
|------------------------|---------------|
| Minimum Order Quantity | 1 piece |
| Customs Tariff Number | 85371099 |
| Country of Origin | Bulgaria (BG) |

Certificates and Declarations (Document Number)

| | |
|--------------------------------|--------------------|
| Declaration of Conformity - CE | 9AKK108468A2381 |
| Instructions and Manuals | No document needed |
| RoHS Information | 9AKK108468A2381 |

Popular Downloads

| | |
|---|--------------------|
| Data Sheet, Technical Information | No document needed |
| Instructions and Manuals | No document needed |
| Conflict Minerals Reporting Template (CMRT) | 9AKK108468A3363 |

Classifications

| | |
|---------------|---|
| ETIM 7 | EC002600 - Box/housing for surface mounting on the wall/ceiling |
| ETIM 8 | EC002600 - Box/housing for surface mounting on the wall/ceiling |
| WEEE Category | Product Not in WEEE Scope |
| eClass | V11.0 : 27144401 |

Categories

Low Voltage Products and Systems → Enclosures → Installation Material → Junction Boxes → Surface Mounted
Low Voltage Products and Systems → Enclosures → Installation Material → Wall Mounting → Junction Boxes

