

Euromas II

Enclosure, ABS



ET 232 F

Order no.: 63232200

* = Available on request.

Characteristics

Colour of enclosure group

Light grey

Protection class

IP 65

Enclosure Material

ABS, PC (UV stabilised); seal made of CR; UL 94 V0 types on request; for details see Technical Information

Scope of delivery

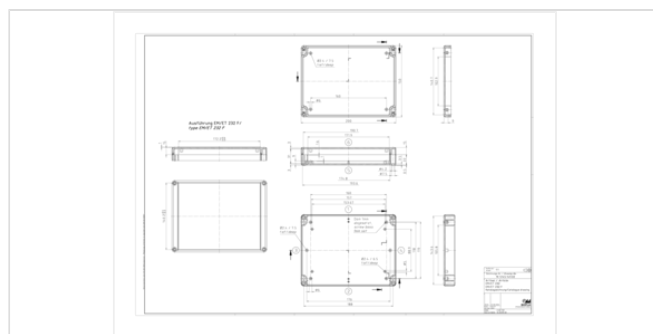
Lid and base, self-tapping coarse-pitch thread lid screws made of V2A

Dimensions

Dimensions

200 x 150 x 37 mm

Product drawing



Important!

To compensate for pressure when temperatures change and cause moisture in the enclosure, we recommend that you use a pressure compensation element.

» Additional information

Technical documentation / Downloads

Technical drawings

3D product data in STEP format: Registration necessary

Product drawing in PDF format: 63232200 ET-232-F.pdf (78.4 KB)

Product drawing in DXF format: 63232200 ET-232-F.dxf (798.5 KB)

Drawing for mechanical processing: 63232200 ET-232-F-G.dxf (584.9 KB)

Milling contours are shown here as a DXF file. (Sub D, USB, HDMI, cable

27.11.2019

Product information

Euromas II GB.pdf (361.5 KB)

Matching accessories



Rubber feet, self-adhesive

22009000 GF

Polyurethane, 65-75 Shore

Black



Wall brackets, screw-on at rear

22010000 EM-WL



Screw covers

22080000 EM-SA



DIN rail acc. to DIN EN 60715 TH 15

22151901 TS 15

For EM/ET 214, EM/ET 221-223, EM/ET 232, EM/ET 237, BCD 200, B 2213..



DIN rail acc. to DIN EN 60715 G 32

22321901 TS 32

For EM/ET 214, EM/ET 221-223, EM/ET 232, EM/ET 237, B 22130.



DIN rail acc. to DIN EN 60715 TH 35

22351901 TS 35

For EM/ET 214, EM/ET 221-223, EM/ET 232, EM/ET 237, BCD 200, B 2213..



Screws (SHR) and distance bolts (DIBLZ) for mounting bosses in plastic enclosures

59006219 SHR Z KA30x6

SD = 3.0 / ND = 2.4-2.6 / KD = 5.3