

Feed-through terminal for direct mount, Screw connection, Mounting type: Mounting surface, Rated cross-section: 2.5 mm², Width: 5 mm, Colour: Beige

Business data

Packaging unit	100
Quantity unit	PC
Weight per piece (not including packaging)	3.4 g
Weight per piece (including packaging)	3.78 g
Unit of weight	G
Customs number	85369010
Country of origin	DE
Product description	Feed-through terminal for direct mount

Technical data

Dimensions

Length	22 mm
Width	5 mm
Height	23 mm
Pitch	5 mm

Ratings

Rated voltage	400 V
Rated current	24 A
Rated cross-section	2.5 mm ²
Rated impulse voltage	6 kV
Overvoltage category	III
Contamination degree	3
Maximum power dissipation for nominal condition	0.77 W

Technical data

Connection data

Connection principle	Screw connection
Connection position	Lateral
Connections	2
Number of terminals per level	2
Number of levels	1
Wire cross-section single-core (rigid) / stranded, min.	0.2 mm ²
Wire cross-section single core (rigid)/stranded, max.	4 mm ²
Wire cross-section stranded, min.	0.2 mm ²
Wire cross-section stranded, max.	4 mm ²
Wire cross-section stranded with wire-end ferrules, min.	0.2 mm ²
Wire cross-section stranded with wire-end ferrules, max.	2.5 mm ²
Wire cross-section AWG, min.	22
Wire cross-section AWG, max.	12
Stripping length	7 mm
Screw head	Slotted
Screw threading	M 2,5
Tightening torque, min.	0.4 Nm
Tightening torque, max.	0.8 Nm

Materials

Insulation housing	Polyamide 6.6
Flammability class UL 94	V-2
Working temperature, min.	-40 °C
Working temperature, max.	105 °C

Further technical data

Mounting type	Mounting face
Gauge plug acc. to EN 60 947-1	A3
End plate required	✓

Print

Colour	Beige
--------	-------

Technical data

Environmental Product Compliance

REACH Conform	yes
REACH Reference date	2021-01-09, 2021-07-08
REACH Candidate Substance Note	No
RoHS Conform	yes

Approvals

Standards and regulations

EAC approval	TR ZU 004/2011
EAC approval granted	yes

cUL Recognized

cUL approval	C22.2 No 158
cUL Usegroup B: rated voltage	300 V
cUL Usegroup B: rated current	20 A
cUL Usegroup C: rated voltage	300 V
cUL Usegroup C: rated current	20 A
cUL wire cross-section single-core (rigid) AWG, min.	22
cUL wire cross-section single-core (rigid) AWG, max.	12
cUL wire cross-section stranded AWG, min.	22
cUL wire cross-section stranded AWG, max.	12
cUL torque	5.3 Nm
cUL wire material	Cu
cUL Recognized	yes

KEMA KEUR approval

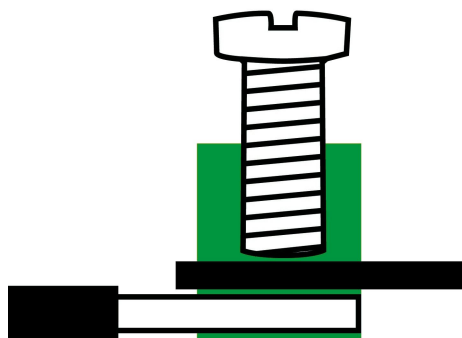
KEMA KEUR approval	EN 60947-7-1:2009
KEMA KEUR approval granted	yes
KEMA rated voltage	400 V
KEMA rated current	24 A
KEMA rated impulse voltage	6 kV
KEMA wire cross-section single core (rigid), min.	0.2 mm ²
KEMA wire cross-section single-core (rigid), max.	4 mm ²
KEMA wire cross-section stranded, min.	0.2 mm ²
KEMA wire cross-section stranded, max.	4 mm ²
KEMA torque, min.	0.4 Nm
KEMA torque, max.	0.8 Nm

Approvals

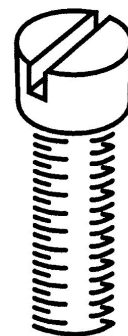
UL Recognized

UL approval	UL 1059
UL Usegroup B: rated voltage	300 V
UL Usegroup B: rated current	20 A
UL Usegroup C: rated voltage	300 V
UL Usegroup C: rated current	20 A
UL wire cross-section single-core (rigid) AWG, min.	22
UL wire cross-section single-core (rigid) AWG, max.	12
UL wire cross-section stranded AWG, min.	22
UL wire cross-section stranded AWG, max.	12
UL torque	5.3 Lb In
UL wire material	Cu
UL factory wiring	yes
UL field wiring	yes
UL Recognized	yes

Media



M2.5



CRA[®]US

EAC



Data sheet

1320.2

BKA 2,5/1 BG



Accessories

1320.2

BKA 2,5/1 BG

Insulated external cross-connector



External insulated cross-connector, No. of poles: 10, Mounting type: Plug in, Width: 50.1 mm, Rated current: 27 A; Colour: Yellow

detail.dataSheet.generalOrderData

Product number:	detail.dataSheet.productName	GTIN (EAN)	detail.dataSheet.
2045.0	AQI 10/5/11 YE	4044211048501	500 ST



External insulated cross-connector, No. of poles: 3, Mounting type: Plug in, Width: 14.36 mm, Rated current: 27 A; Colour: Yellow

detail.dataSheet.generalOrderData

Product number:	detail.dataSheet.productName	GTIN (EAN)	detail.dataSheet.
2033.0	AQI 3/5/11 YE	4044211048358	500 ST



External insulated cross-connector, No. of poles: 2, Mounting type: Plug in, Width: 9.26 mm, Rated current: 27 A; Colour: Yellow

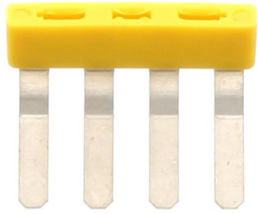
detail.dataSheet.generalOrderData

Product number:	detail.dataSheet.productName	GTIN (EAN)	detail.dataSheet.
2032.0	AQI 2/5/11 YE	4044211048341	500 ST

1320.2

BKA 2,5/1 BG

Insulated external cross-connector



External insulated cross-connector, No. of poles: 4, Mounting type: Plug in, Width: 19.46 mm, Rated current: 27 A; Colour: Yellow

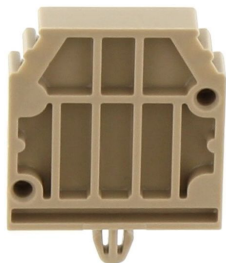
detail.dataSheet.generalOrderData

Product number:	detail.dataSheet.productName	GTIN (EAN)	detail.dataSheet
2044.0	AQI 4/5/11 YE	4044211048495	500 ST

1320.2

BKA 2,5/1 BG

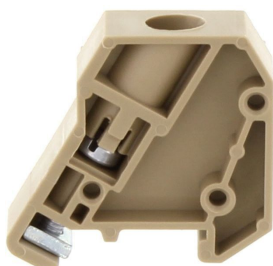
End support



End support, Mounting type: Mounting surface, Width: 5 mm, Colour: Beige

detail.dataSheet.generalOrderData

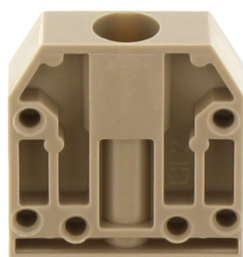
Product number:	detail.dataSheet.productName	GTIN (EAN)	detail.dataSheet.
2147.2	EH 2/Z BG	4044211049683	500 ST



End support, Mounting type: Mounting rail TS 15/5.5, Width: 9 mm, Colour: Beige

detail.dataSheet.generalOrderData

Product number:	detail.dataSheet.productName	GTIN (EAN)	detail.dataSheet.
2945.2	EH 15 BG	4044211056728	500 ST



End support, Mounting type: Mounting surface, Width: 7 mm, Colour: Beige

detail.dataSheet.generalOrderData

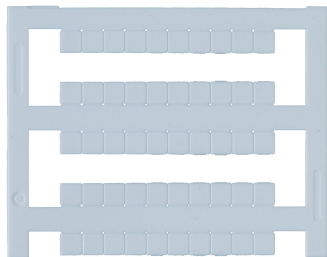
Product number:	detail.dataSheet.productName	GTIN (EAN)	detail.dataSheet.
2136.2	EH 2 BG	4044211049553	500 ST

Creation date 18.08.2021 11:58:53
Subject to technical changes

1320.2

BKA 2,5/1 BG

Quick marking



Terminal marker / Pocket Maxicard, Length: 5 mm, Width: 5 mm, Colour: White

detail.dataSheet.generalOrderData

Product number:	detail.dataSheet.productName	GTIN (EAN)	detail.dataSheet.
4600.7	PMC SB 5/50 WH	4044211088903	500 ST

Screwdriver



Screwdriver with bare blade, Colour: Black-grey

detail.dataSheet.generalOrderData

Product number:	detail.dataSheet.productName	GTIN (EAN)	detail.dataSheet.
1085.0	SDB 0,5x3,0	4044211014643	500 ST