



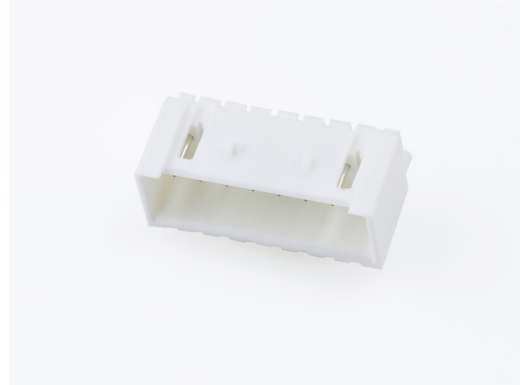
Part Number : [534260810](#)

Product Description : 2.50mm Pitch, Mini-Lock PCB Header, Single Row, Right-Angle, Through Hole with Kinked Pins, Tin Plating, Positive Lock, 8 Circuits, Tray, 3.40mm PC Tail Length, Natural

Series Number : 53426

Status : Active

Product Category : PCB Headers and Receptacles



Documents & Resources

Drawings

[Drawing 534260810_sd.pdf](#)

3D Models and Design Files

[2D Drawing DXF 534260810.dxf](#)

[2D Drawing DXF \(PDF\) 534260810.pdf](#)

[3D Model 534260810_stp.zip](#)

Specifications

[Packaging Specification SPK-53426-002-001.pdf](#)


[Product Specification PS-51103-005-001.pdf](#)

[Product Specification 511630000-PS-000.pdf](#)

[Product Specification 511631000-PS-000.pdf](#)

Product Environment Compliance

Compliance

GADSL/IMDS	Not Relevant
China RoHS	
EU ELV	Not Relevant
Low-Halogen Status	Not Low-Halogen per IEC 61249-2-21
REACH SVHC	Not Contained per D(2023)3788-DC (14 Jun 2023)
EU RoHS	Compliant per EU 2015/863

[Multiple Part Product Compliance Statements](#)

- Eu RoHS

- REACH SVHC

- Low-Halogen

Multiple Part Industry Compliance Documents

- IPC 1752A Class C

- IPC 1752A Class D

- Molex Product Compliance Declaration

- IEC-62474

- chemSHERPA (xml)

EU RoHS Certificate of Compliance

Part Details

General

Status	Active
Category	PCB Headers and Receptacles
Series	53426
Description	2.50mm Pitch, Mini-Lock PCB Header, Single Row, Right-Angle, Through Hole with Kinked Pins, Tin Plating, Positive Lock, 8 Circuits, Tray, 3.40mm PC Tail Length, Natural
Application	Signal, Wire-to-Board
Component Type	PCB Header
Product Family	Mini-Lock Wire-to-Board Connector System
Product Name	Mini-Lock
UPC	800754357203

Agency

CSA	LR19980
UL	E29179

Electrical

Current - Maximum per Contact	3.0A
Voltage - Maximum	250V AC (RMS)/DC

Physical

Breakaway	No
-----------	----

Circuits (Loaded)	8
Circuits (maximum)	8
Color - Resin	Natural
Durability (mating cycles max)	30
Flammability	94V-0
Glow-Wire Capable	No
Keying to Mating Part	None
Lock to Mating Part	Yes
Material - Metal	Phosphor Bronze
Material - Plating Mating	Tin
Material - Plating Termination	Tin
Material - Resin	Polyester
Net Weight	1071.400/mg
Number of Rows	1
Orientation	Right Angle
Packaging Type	Tray
PC Tail Length	3.40mm
PCB Locator	No
PCB Retention	Yes
PCB Thickness - Recommended	1.60mm
Pitch - Mating Interface	2.50mm
Polarized to Mating Part	Yes
Polarized to PCB	No
Shrouded	Fully
Stackable	No
Temperature Range - Operating	-55° to +105°C
Termination Interface Style	Through Hole - Kinked Pin

Mates With / Use With

Mates with Part(s)

Description	Part Number
Mini-Lock Single Row Receptacle Housings	<u>51163</u>
Mini-Lock-to-Mini-Lock Off-the-Shelf (OTS) Cable Assemblies	<u>15137</u>

This document was generated on Jan 29, 2024