

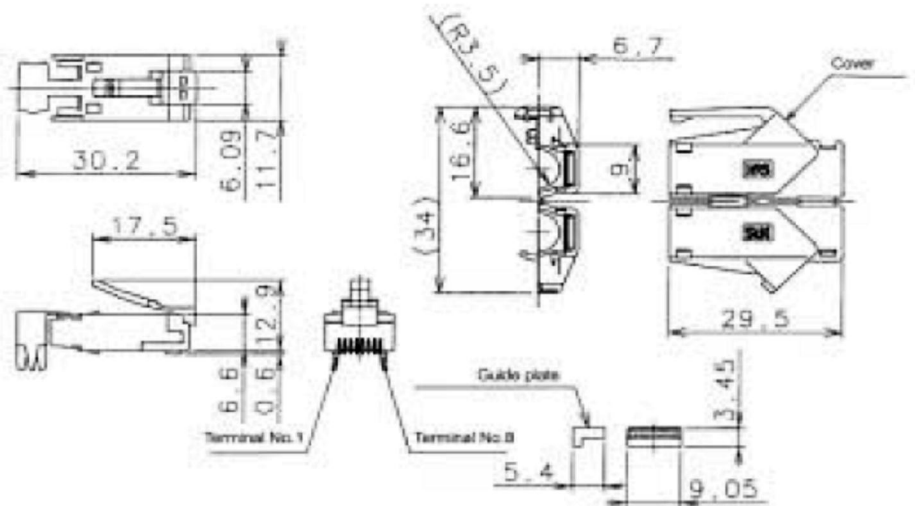
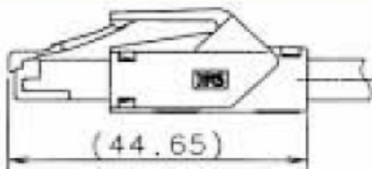
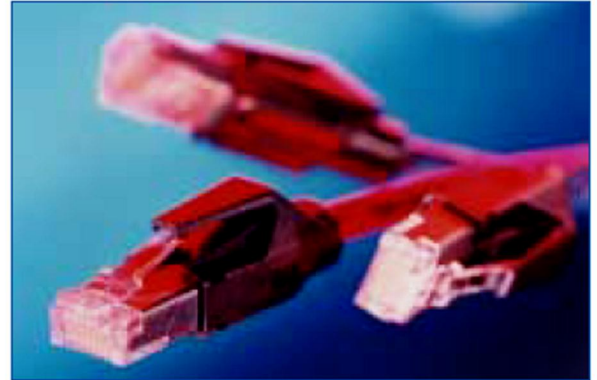
## RJ45 Shielded Plugs

TM21 plugs are designed to meet all of the performance requirements of Cat 6 when link tested up to 250 MHz Class E. These shielded RJ45 plugs have a guide plate to assist assembly onto either solid or stranded cables. The hood is available in nine different colours, incorporates latch protection and can be fitted after the plug has been assembled onto the cable.

### FEATURES

- Link tested to Cat 6.
- Fully shielded.
- Fold up hood incorporates latch protector.
- Plug can be terminated to solid or stranded cable.
- Guide plate allows easy assembly.
- Hoods available in 9 colours.
- Will accept cables up to 6.6mm dia.
- Hand tool terminates TM21 in one easy operation.

TM21 Plug - TM21P-88P(\*\*)

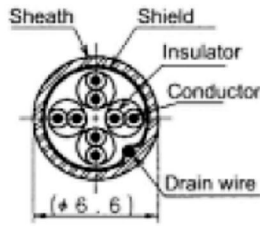


Part Number	CL No.	Cover Color	TYPE
TM21P-88P	222-2862-9-00	Light beige	Full Kit
TM21P-88P(12)	222-2862-9-12	Medium gray	Hood Only
TM21P-88P(13)	222-2862-9-13	Black	Hood Only
TM21P-88P(14)	222-2862-9-14	Natural light gray	Hood Only
TM21P-88P(15)	222-2862-9-15	Red	Hood Only
TM21P-88P(16)	222-2862-9-16	Green	Hood Only
TM21P-88P(17)	222-2862-9-17	Blue	Hood Only
TM21P-88P(18)	222-2862-9-18	Yellow	Hood Only
TM21P-88P(19)	222-2862-9-19	Orange	Hood Only
TM21P-88P(11)	222-2862-9-11	Light beige	Hood Only



# TM21 Series - RJ45 Shielded Plugs

## CABLE SPECIFICATIONS



<b>Conductor</b>	φ0.5mm solid wire AWG 24 twisted wire (φ0.2mm x 7) AWG 25 twisted wire (φ0.18mm x 7)
<b>Insulator Outer Dia.</b>	(φ0.9 - 1.0mm)
<b>Drain Wire</b>	AWG 26 (tinned wire)
<b>Seath Outer Dia.</b>	(φ6.6mm)

## TECHNICAL DATA

<b>Rating:</b> Current 0.5A Voltage AC 125V	<b>Ambient Temperature Range:</b> Plug -25°C to +60°C
--	---

Item	Standard	Condition
Insulation Resistance	100MΩ or more	Measure with DC 100V
Withstand Voltage	Without flashing, insulation perforation	AC 500V for 1 min
Contact Resistance	230mΩ or less	Measure with 100mA
Vibration Resistance	Without electric breaks of 5μ sec or longer; contact resistance of 250mΩ or less	10 - 55Hz, half amplitude 0.75mm, 2 hours in 3 directions
Mechanical Shock Resistance	Without electric breaks of 5μ sec or longer; contact resistance of 250mΩ or less	Acceleration 490m/s <sup>2</sup> , duration 11ms, 3 times in 3 directions
Near-End Crosstalk	30.1dB or greater (when measured at the channel link)	Measure properties between each pair with 250MHz
Sampling Lifetime	Contact resistance of 250mΩ or less	200 times
Temperature Cycle	Contact resistance of 250mΩ or less; insulation resistance of 100MΩ or greater	(-55°C: 30 min → 5 to 35°C: 5 min → 85°C: 30min → 5 to 35°C: 5 min) 5 cycles
Humidity Resistance	Contact resistance of 250mΩ or less; insulation resistance of 1MΩ or greater (in humid conditions); insulation resistance 100MΩ or greater (dry conditions)	Kept for 500 hrs in 40°C, 90 to 95% humidity conditions
Salt & Water Spray	Contact resistance of 250mΩ or less	Kept for 48 hrs in a 5% concentration salt water solution

## APPLICABLE HAND TOOL

Part No - HT601/TM21P-88P

CL Code - 902-2133-1-00

The unique hand tool is quick and easy to use. The strain relief clamp and contacts are crimped in one easy step. The tool can also be used for the TM11 Series.



### For the latest information please contact

**Hirose Electric UK Ltd**  
**St Andrews House**  
**Caldecotte Lake Drive**  
**Caldecotte Business Park**  
**Milton Keynes MK7 8LQ**  
**01908 369060**  
**www.hirose.co.uk**