

## Item Based Datasheet

pressure gauge with mounted diaphragm seals, with milk tube screw connection

Modelcode type: **DSS18F**

Item number: **45817938**

### pressure gauge with mounted diaphragm seals, with milk tube screw connection

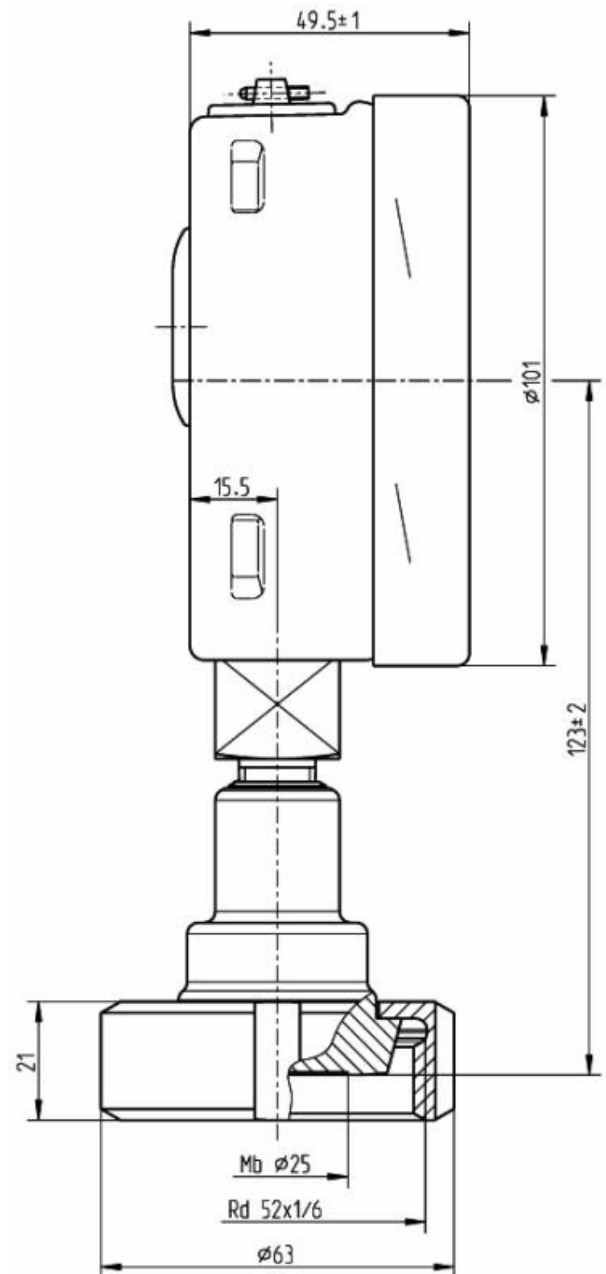
Pressure measuring instrument	Manometer according to EN 837-1 nominal size 100 mm
Accuracy class	class 1.0
Scale range	0...6 bar
Pointer	adjustable pointer
Window	laminated safety glass
Measuring system	stainless steel
Bezel ring	cam ring (bayonet type), stainless steel
Connector location	lower mount
Pressure Gauge Standard	International (standard Europe)

### XXX

Assembly	direct assembly
System fill fluid	KN 92 Medicinal white mineral oil; for pharmaceutical and food applications; FDA, USP, EP
Process temperature min.	+ 10°C
Process temperature max.	+ 80°C; for sterilisation (SIP) max. + 130°C
Ambient temperature pressure meas. min	+ 10°C
Ambient temperature pressure meas. max	+ 40°C

### XXX

Diaphragm seal variant	milk tube screw connection
Process connection specification	Grooved union nut



## Item Based Datasheet

**pressure gauge with mounted diaphragm seals, with milk tube screw connection**

**Modelcode type: DSS18F**

**Item number: 45817938**

pipe standard	Pipe dimensions per DIN 11850 row 2
Process connection	DN 25 (pipe dimensions 29.0 x 1.5)
Wetted parts	Stainless steel 1.4435 (316L); UNS S31603
Surface roughness wetted parts, welding seam excluded	Ra ? 0,76 µm (Ra 0.30 µin.) according to ASME BPE SF3

**XXX**

Temperature error prozess in mbar/10°K	12 mbar
Temperature error ambient in mbar/10°K	48 mbar