

# Bocube

Enclosures, ABS, single-coloured



B 100806 ABS 7024  
Order no.: 96032124

\* = Available on request.

## Characteristics

Colour of enclosure group  
Graphite grey, similar to RAL 7024

Colour of enclosure group  
Graphite grey

Protection class  
IP 66, 68 - 1,2m (2 hours)

Enclosure Material

ABS or PC UL 94 V0 (material is suitable for outdoor use; f1-listing according to UL 746C)

PU seal, foamed; for details please see Technical Information

## Scope of delivery

Lid and base, hinged quick-release catches

## Note

Material shrinkage may result in ABS enclosures being approx. 0.1 - 0.25 % larger.

## Important!

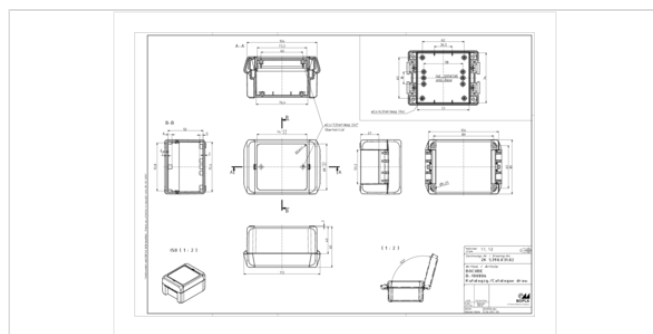
To compensate for pressure when temperatures change and cause moisture in the enclosure, we recommend that you use a pressure compensation element.

» Additional information

## Dimensions

Dimensions  
113 x 80 x 60 mm

## Product drawing



## Technical documentation / Downloads

---

### Technical drawings

3D product data in STEP format: Registration necessary  
Product drawing in PDF format: 96032124 B-100806-ABS-7024.pdf (182.0 KB)  
Product drawing in DXF format: 96032124 B-100806-ABS-7024.dxf (3.5 MB)  
Drawing for mechanical processing: 96032124 B-100806-ABS-7024-G.dxf (2.8 MB)

Milling contours are shown here as a DXF file. (Sub D, USB, HDMI, cable glands, ...)

### Works Test Certificates

688 WPZ-Bocube-PC-V0 DE.pdf (184.6 KB)  
689 WPZ-Bocube-ABS DE.pdf (165.1 KB)  
689 WPZ-Bocube-ABS EN.pdf (160.3 KB)  
688 WPZ-Bocube-PC-V0 EN.pdf (179.1 KB)

### Product information

Bocube GB.pdf (1.9 MB)  
Highlights Bocube.pdf (3.8 MB)

## Matching accessories

---



### Hinged quick-release catches (Set), polycarbonate UL 94 V0 or ABS

96330100	B SC 08 ABS 3000	For B 0808.., B 1008.., B 1408.., B 1808..	Flame red
96330102	B SC 08 ABS 5002	For B 0808.., B 1008.., B 1408.., B 1808..	Ultramarine blue
96330109	B SC 08 ABS 6029	For B 0808.., B 1008.., B 1408.., B 1808..	Mint green
96330104	B SC 08 ABS 7024	For B 0808.., B 1008.., B 1408.., B 1808..	Graphite grey
96330105	B SC 08 ABS 7035	For B 0808.., B 1008.., B 1408.., B 1808..	Light grey
96330103	B SC 08 ABS 1023	For B 0808.., B 1008.., B 1408.., B 1808..	Traffic yellow



### Hand-operated hinged catch (set), polycarbonate UL 94 V0 or ABS

96930100	B SC HB 08 ABS 3000	For B 0808.., B 1008.., B 1408.., B 1808..	Flame red
96930102	B SC HB 08 ABS 5002	For B 0808.., B 1008.., B 1408.., B 1808..	Ultramarine blue
96930109	B SC HB 08 ABS 6029	For B 0808.., B 1008.., B 1408.., B 1808..	Mint green
96930104*	B SC HB 08 ABS 7024	For B 0808.., B 1008.., B 1408.., B 1808..	Graphite grey
96930105*	B SC HB 08 ABS 7035	For B 0808.., B 1008.., B 1408.., B 1808..	Light grey
96930103	B SC HB 08 ABS 1023	For B 0808.., B 1008.., B 1408.., B 1808..	Traffic yellow



### Wall brackets

96510005	B WL 7035	For B 08... - B 26...	Light grey
96510004	B WL 7024	For B 08... - B 26...	Graphite grey



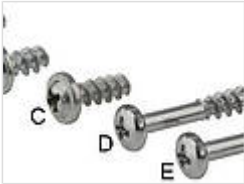
### Mounting panels, laminated paper, 2 mm

96602100 B M 1008 For B 1008..



### Front panels, 2 mm, natural-coloured anodised aluminium

96702100 B FP 1008 For B 1008.., front panel thickness 1.5 mm



### Sets of screws

96300000	B SHR	D (for optional screwing of enclosures B 0808 - 2617)
96600010	B M-SHR	C (for fixing mounting panels B M 1008-2736)
96700000	B FP-SHR	A (for fixing front panels)



### Distance bolts

96726000	DIBLZ AK 30x7/IM3/26	ND = 2.4 - 2.6, for B...06 if a mounting plate is used
96728000	DIBLZ AK 30x5/IM3/28	ND = 2.4 - 2.6, for B...06



### Blanking plugs to determine the hinge side

96410000	B VS 3000	Flame red
96410005	B VS 7035	Light grey
96410004	B VS 7024	Graphite grey



### DIN rail acc. to DIN EN 60715 TH 15

22150701 TS 15 For EM/ET 207-210, EM/ET 225, B 1008..



### DIN rail acc. to DIN EN 60715 G 32

22320701 TS 32 For EM/ET 208-210, EM/ET 225, B 1008..



### DIN rail acc. to DIN EN 60715 TH 35

22350701 TS 35 For EM/ET 208-210, EM/ET 225, B 1008..



### Pressure compensation membrane DAE

52011000 DAE-D11 Self-adhesive membrane ø 11 mm



Screws (SHR) and distance bolts (DIBLZ) for mounting bosses in plastic enclosures

59006217 SHR Z KA30x8

SD = 3,0 / ND = 2,4-2,6 / KD = 6,0