

PART NAME	NEMA 4X CABLE GLAND	PART No.	NG-9511 TO NG-9517	REV. DATE	2-24-23
-----------	---------------------	----------	--------------------	-----------	---------

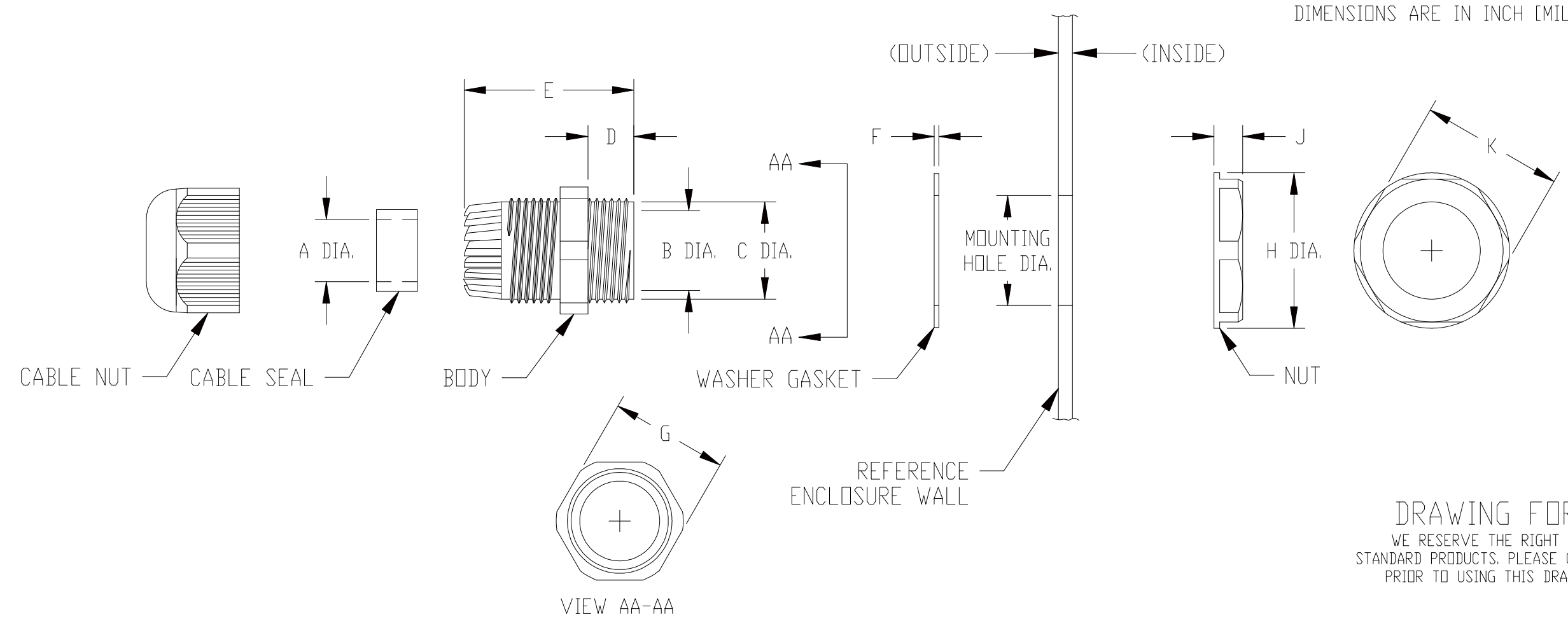
PART NO.	MOUNT THREAD	CABLE RANGE (DIAMETER)	MOUNTING HOLE SIZE (DIAMETER)	RECOMMENDED TORQUE FOR ASSEMBLING
NG-9511	PG-7	0.118 [3] - 0.169 [4.3]	0.492 [12.5] - 0.504 [12.8]	18 IN./LB. [2 N-m]
NG-9512	PG-9	0.157 [4] - 0.252 [6.4]	0.598 [15.2] - 0.610 [15.5]	27 IN./LB. [3 N-m]
NG-9513	PG-11	0.197 [5] - 0.295 [7.5]	0.732 [18.6] - 0.744 [18.9]	35 IN./LB. [4 N-m]
NG-9514	PG-13.5	0.236 [6] - 0.433 [11]	0.803 [20.4] - 0.815 [20.7]	40 IN./LB. [4.5 N-m]
NG-9515	PG-16	0.394 [10] - 0.512 [13]	0.886 [22.5] - 0.898 [22.8]	44 IN./LB. [5 N-m]
NG-9516	PG-21	0.512 [13] - 0.669 [17]	1.114 [28.3] - 1.130 [28.7]	44-46 IN./LB. [5-7.5 N-m]
NG-9517	PG-29	0.709 [18] - 0.945 [24]	1.457 [37] - 1.472 [37.4]	44-66 IN./LB. [5-7.5 N-m]

MATERIAL:
 CABLE NUT, BODY & NUT - NYLON -66, UL94V-2, IP-68
 CABLE SEAL & WASHER GASKET - NBR (N) RUBBER

COLOR:
 CABLE NUT, BODY & NUT - BLACK
 CABLE SEAL & WASHER GASKET - BLACK

OPERATING TEMPERATURE: -40°F. TO 221°F. [-40°C. TO 105°C.]

DIMENSIONS ARE IN INCH [MILLIMETER]



DRAWING FOR REFERENCE
 WE RESERVE THE RIGHT TO MAKE CHANGES TO OUR
 STANDARD PRODUCTS. PLEASE CONSULT WITH BUD INDUSTRIES
 PRIOR TO USING THIS DRAWING FOR DESIGN PURPOSE.

PART NO.	DIMENSIONS									
	A	B	C	D	E	F	G	H	J	K
NG-9511	0.158 [4]	0.310 [7.9]	0.478 [12.1]	0.319 [8.1]	1.102 [28]	0.041 [1]	0.601 [15.2]	0.830 [21.1]	0.208 [5.3]	0.748 [19]
NG-9512	0.224 [5.7]	0.380 [9.6]	0.570 [14.5]	0.320 [8.1]	1.175 [29.8]	0.041 [1]	0.723 [18.4]	0.916 [23.2]	0.190 [4.8]	0.833 [23.9]
NG-9513	0.290 [7.4]	0.515 [13.1]	0.715 [18.2]	0.317 [8.1]	1.238 [31.4]	0.041 [1]	0.842 [21.4]	1.044 [26.5]	0.207 [5.3]	0.942 [23.9]
NG-9514	0.420 [10.7]	0.600 [15.2]	0.801 [20.3]	0.360 [9.1]	1.351 [34.3]	0.038 [1]	0.940 [23.9]	1.155 [29.3]	0.233 [5.9]	1.057 [26.8]
NG-9515	0.515 [13.1]	0.674 [17.1]	0.875 [22.2]	0.366 [9.3]	1.445 [36.7]	0.041 [1]	1.058 [26.9]	1.293 [32.8]	0.257 [6.5]	1.177 [29.9]
NG-9516	0.666 [16.9]	0.858 [21.8]	1.105 [28.1]	0.410 [10.4]	1.610 [40.9]	0.041 [1]	1.280 [32.5]	1.550 [39.4]	0.287 [7.3]	1.420 [36.1]
NG-9517	0.976 [24.8]	1.178 [29.9]	1.438 [36.5]	0.431 [10.9]	1.791 [45.5]	0.051 [1.3]	1.625 [41.3]	1.970 [50]	0.318 [8.1]	1.810 [46]

Mouser Electronics

Authorized Distributor

Click to View Pricing, Inventory, Delivery & Lifecycle Information:

Bud Industries:

[NG-9512](#) [NG-9514](#) [NG-9511](#) [NG-9516](#) [NG-9515](#) [NG-9517](#) [NG-9513](#)