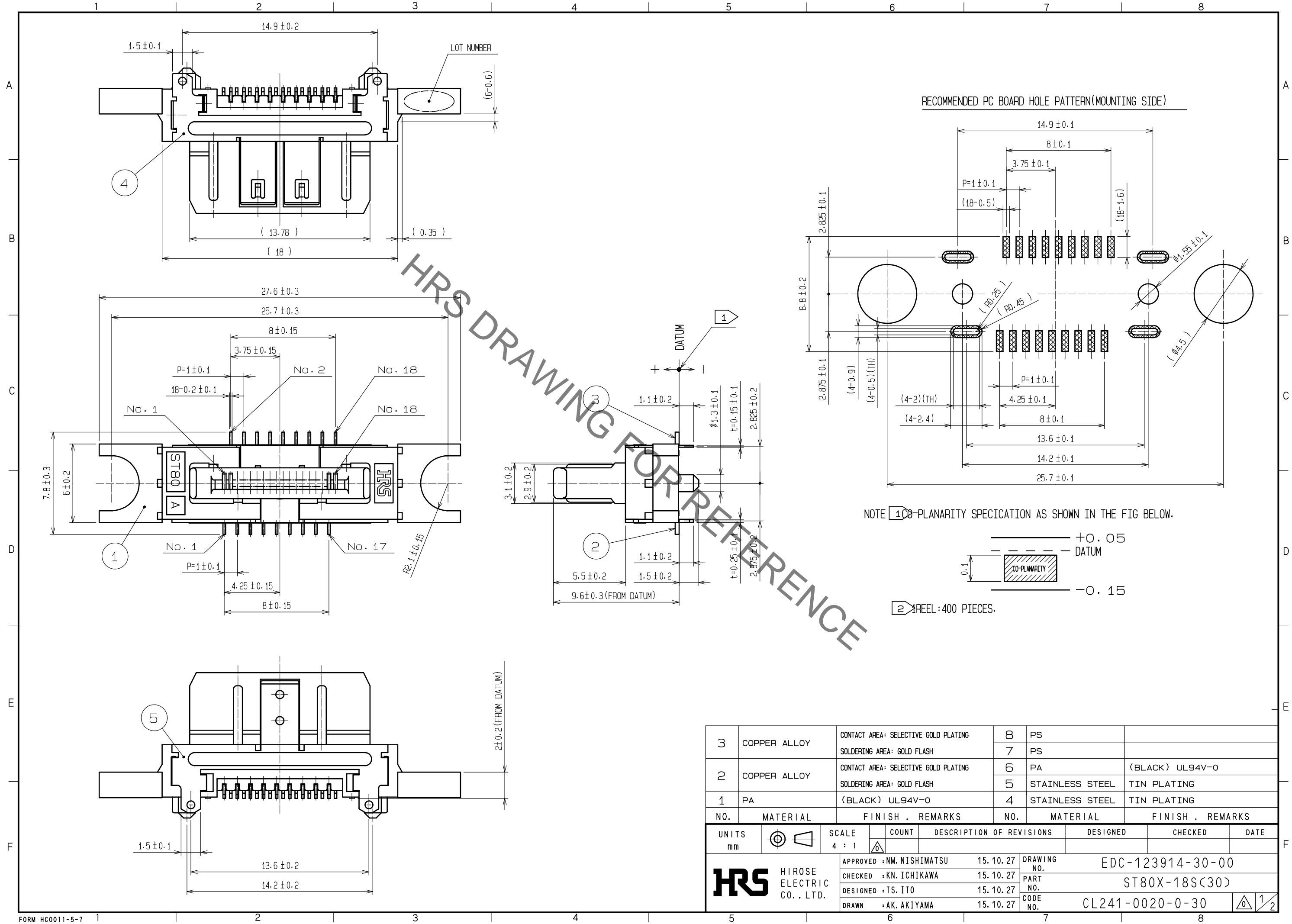
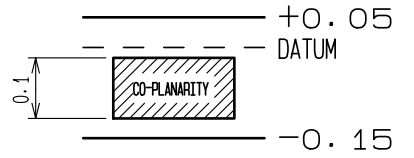


Jan.1.2022 Copyright 2022 HIROSE ELECTRIC CO., LTD. All Rights Reserved.
In case of consideration for using Automotive equipment / device which demand high reliability, kindly contact our sales window correspondents.



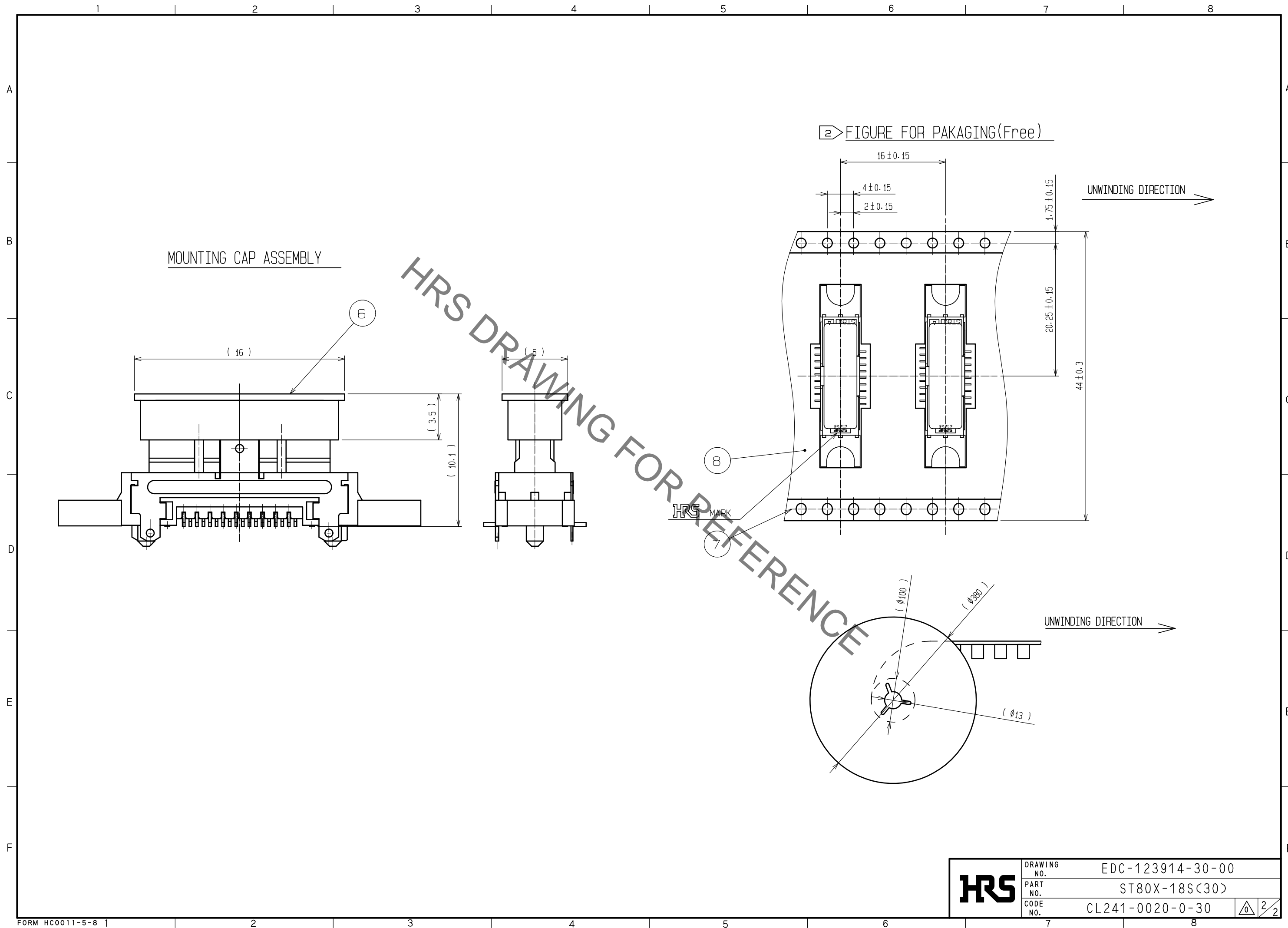
NOTE 1 CO-PLANARITY SPECIFICATION AS SHOWN IN THE FIG BELOW.



2 REEL : 400 PIECES.

| 3 | COPPER ALLOY | CONTACT AREA: SELECTIVE GOLD PLATING SOLDERING AREA: GOLD FLASH | 8 | PS | |
|---------------------------|--------------|--|------------------|--------------------------|------------------|
| 2 | COPPER ALLOY | CONTACT AREA: SELECTIVE GOLD PLATING SOLDERING AREA: GOLD FLASH | 6 | PA | (BLACK) UL94V-0 |
| 1 | PA | (BLACK) UL94V-0 | 5 | STAINLESS STEEL | TIN PLATING |
| | | | 4 | STAINLESS STEEL | TIN PLATING |
| NO. | MATERIAL | FINISH . REMARKS | NO. | MATERIAL | FINISH . REMARKS |
| UNITS mm | | SCALE 4 : 1 | COUNT △ | DESCRIPTION OF REVISIONS | |
| DESIGNED | | CHECKED | | DATE | |
| APPROVED : NM. NISHIMATSU | | | 15. 10. 27 | | |
| CHECKED : KN. ICHIKAWA | | | 15. 10. 27 | | |
| DRAWN : AK. AKIYAMA | | | 15. 10. 27 | | |
| DRAWING NO. | | | EDC-123914-30-00 | | |
| PART NO. | | | ST80X-18S(30) | | |
| CODE NO. | | | CL241-0020-0-30 | | |
| | | | △ 1/2 | | |

Jan.1.2022 Copyright 2022 HIROSE ELECTRIC CO., LTD. All Rights Reserved.
In case of consideration for using Automotive equipment / device which demand high reliability, kindly contact our sales window correspondents.



| | | |
|------------|-------------|------------------|
| HRS | DRAWING NO. | EDC-123914-30-00 |
| | PART NO. | ST80X-18S(30) |
| | CODE NO. | CL241-0020-0-30 |
| | | 2/2 |

Mouser Electronics

Authorized Distributor

Click to View Pricing, Inventory, Delivery & Lifecycle Information:

[Hirose Electric:](#)

[ST80X-18S\(30\)](#)