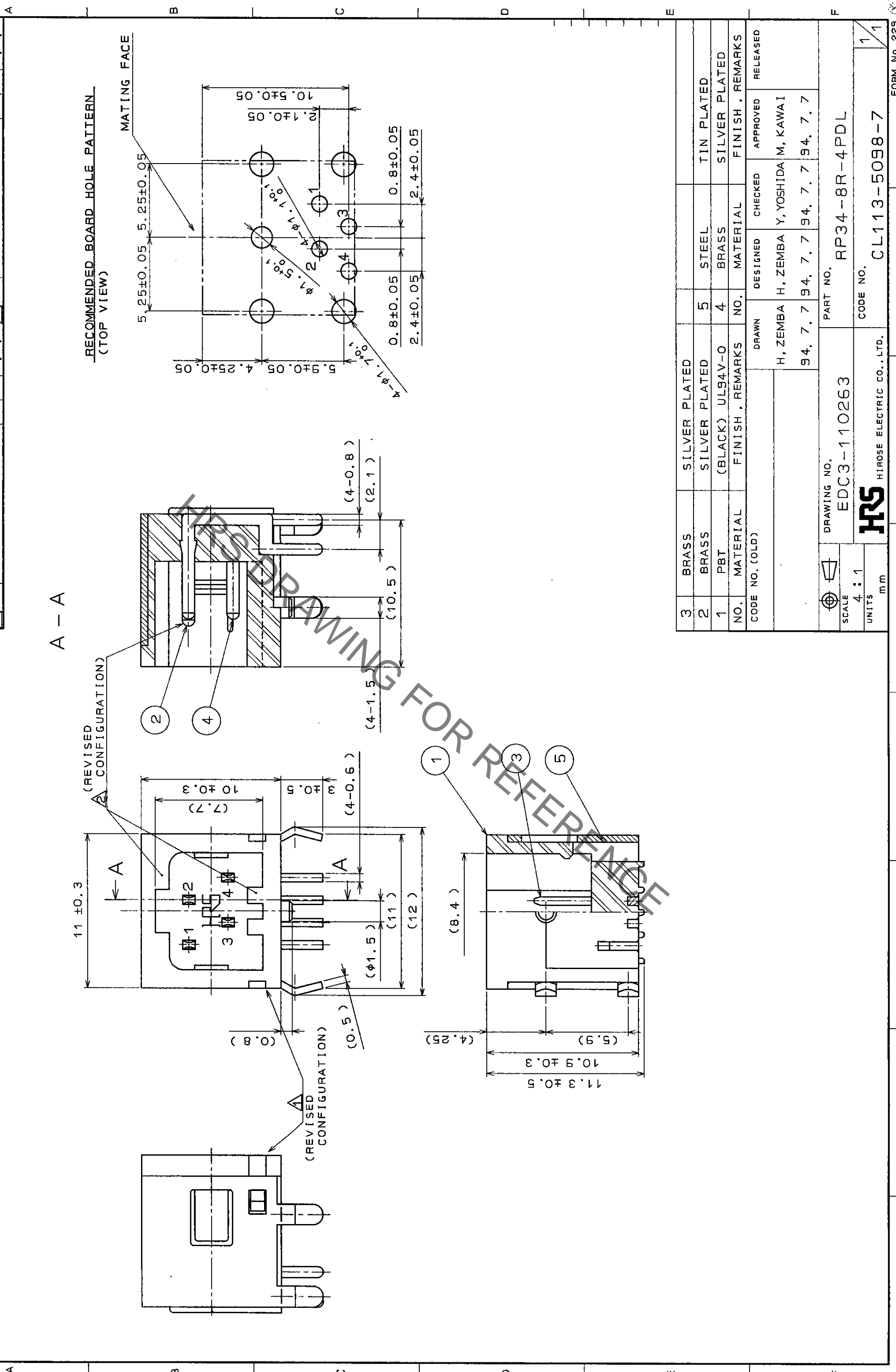


Jan. 1.2022 Copyright 2022 HIROSE ELECTRIC CO., LTD. All Rights Reserved.
 In case of consideration for using Automotive equipment / device which demand high reliability, kindly contact our sales window correspondents.



A - A

(REVISED CONFIGURATION)

(REVISED CONFIGURATION)

(REVISED CONFIGURATION)

(7.7)

10 ± 0.3

11 ± 0.3

10.5 ± 0.3

(4-0.6)

(0.8)

(0.5)

(φ1.5)

(11)

(12)

(4-1.5)

(4-0.8)

(2.1)

(10.5)

(4-1.7 ± 0.1)

5.9 ± 0.05

5.9 ± 0.05

5.25 ± 0.05

2.1 ± 0.05

10.5 ± 0.3

2.4 ± 0.05

0.8 ± 0.05

2.4 ± 0.05

4-φ1.5 ± 0.1

4-φ1.5 ± 0.1

φ1.5 ± 0.1

4-φ1.5 ± 0.1

φ1.5 ± 0.1

4-φ1.5 ± 0.1

RECOMMENDED BOARD HOLE PATTERN
(TOP VIEW)

MATING FACE

3	BRASS	SILVER PLATED				
2	BRASS	SILVER PLATED	5	STEEL	TIN PLATED	
1	PBT	(BLACK) UL94V-0	4	BRASS	SILVER PLATED	
NO.	MATERIAL	FINISH . REMARKS	NO.	MATERIAL	FINISH . REMARKS	
CODE NO. (OLD)	DRAWN		DESIGNED	CHECKED	APPROVED	RELEASED
	H, ZEMBA		H, ZEMBA	Y, YOSHIDA	M, KAWAI	
	94. 7. 7		94. 7. 7	94. 7. 7	94. 7. 7	94. 7. 7
DRAWING NO.		PART NO.		REMARKS		
EDC3-110263		RP34-8R-4PDL				
SCALE		CODE NO.		1/1		
4 : 1		CL113-5098-7				
UNITS		mm				

Mouser Electronics

Authorized Distributor

Click to View Pricing, Inventory, Delivery & Lifecycle Information:

[Hirose Electric:](#)

[RP34-8R-4PDL](#)