


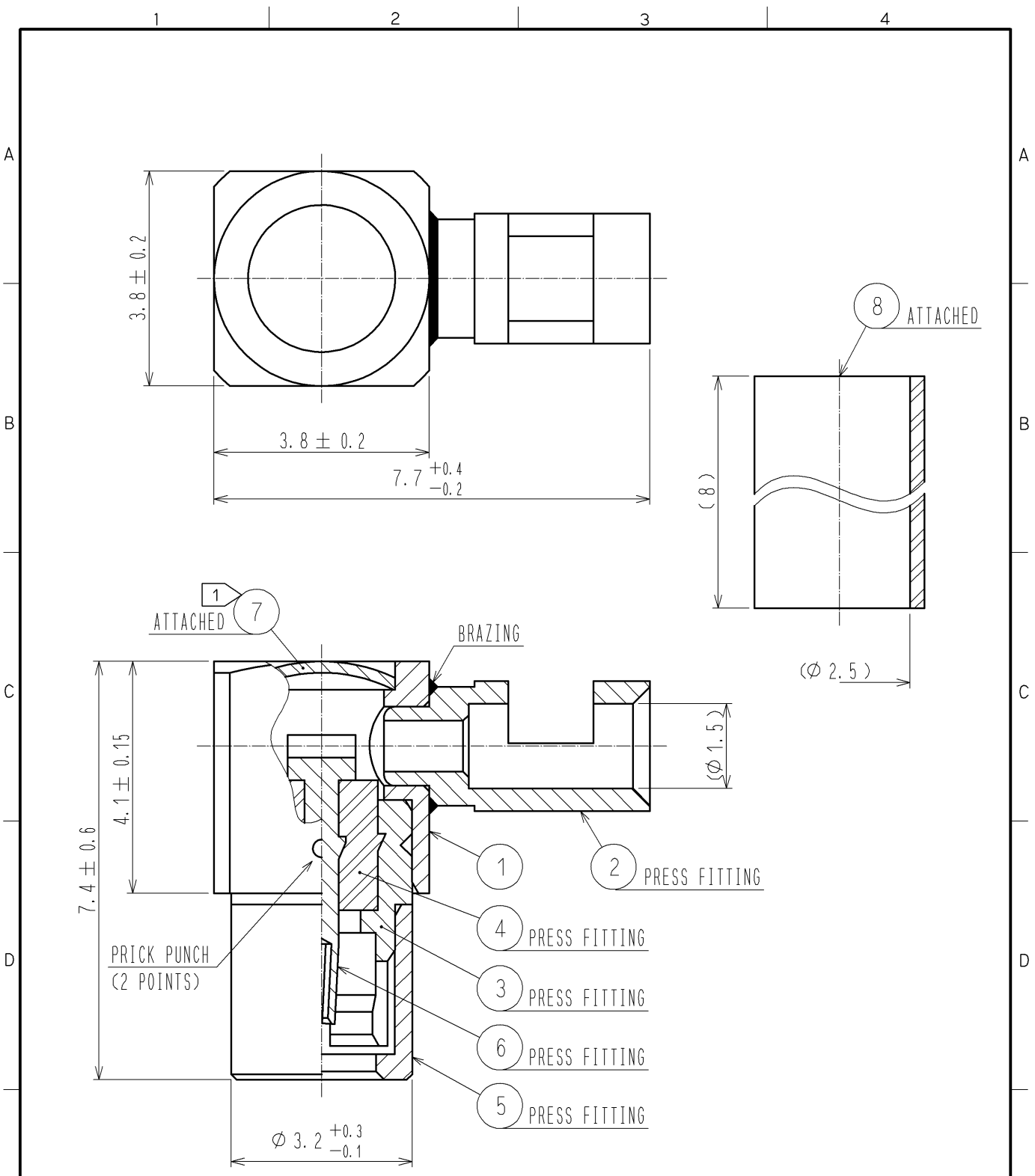


APPLICABLE STANDARD					
RATING	OPERATING TEMPERATURE RANGE	-55°C TO +85°C (95%RH MAX)	STORAGE TEMPERATURE RANGE	-55°C TO +85°C (95%RH MAX)	
	POWER	— W	CHARACTERISTIC IMPEDANCE	50 Ω (0 TO 7 GHz)	
	PECULIARITY	—	APPLICABLE CABLE	DTR178 , DFS025	
SPECIFICATIONS					
ITEM	TEST METHOD		REQUIREMENTS	QT	AT
CONSTRUCTION					
GENERAL EXAMINATION	VISUALLY AND BY MEASURING INSTRUMENT.		ACCORDING TO DRAWING.	X	X
MARKING	CONFIRMED VISUALLY.			—	—
ELECTRIC CHARACTERISTICS					
CONTACT RESISTANCE	100 mA MAX (DC OR 1000 Hz).		CENTER CONTACT 10 mΩ MAX.	X	X
			OUTER CONTACT 3 mΩ MAX.	X	X
INSULATION RESISTANCE	250 V DC.		1000 MΩ MIN.	X	X
VOLTAGE PROOF	250 V AC FOR 1 min. CURRENT LEAKAGE 2mA MAX.		NO FLASHOVER OR BREAKDOWN.	X	X
VOLTAGE STANDING WAVE RATIO	FREQUENCY 0.045 TO 7 GHz		VSWR 1.3 MAX.	X	—
INSERTION LOSS	FREQUENCY — TO — GHz		— dB MAX.	—	—
MECHANICAL CHARACTERISTICS					
CONTACT INSERTION AND EXTRACTION FORCES	MEASURED BY $\phi 0.3 \begin{matrix} 0 \\ -0.005 \end{matrix}$ STEEL GAUGE.		INSERTION FORCE — N MAX.	—	—
			EXTRACTION FORCE 0.2 N MIN.	X	X
INSERTION AND WITHDRAWAL FORCES	MEASURED BY APPLICABLE CONNECTOR.		INSERTION FORCE — N MAX.	—	—
			EXTRACTION FORCE 5 N MIN.	X	X
MECHANICAL OPERATION	200 TIMES INSERTIONS AND EXTRACTIONS.		1) CONTACT RESISTANCE: CENTER CONTACT 15 mΩ MAX. OUTER CONTACT 5 mΩ MAX. 2) NO DAMAGE, CRACK AND LOOSENESS OF PARTS.	X	—
VIBRATION	FREQUENCY 10 TO 500 Hz SINGLE AMPLITUDE 0.75 mm, 98 m/s ² AT 10 CYCLES FOR 3 DIRECTIONS.		1) NO ELECTRICAL DISCONTINUITY OF 1 μs. 2) NO DAMAGE, CRACK AND LOOSENESS OF PARTS.	X	—
SHOCK	490 m/s ² DIRECTIONS OF PULSE 11 ms AT 3 TIMES FOR 3 DIRECTIONS.			X	—
CABLE CLAMP ROBUSTNESS (AGAINST CABLE PULL)	APPLYING A PULL FORCE THE CABLE AXIALLY AT 49 N MAX.		1) NO WITHDRAWAL AND BREAKAGE OF CABLE. 2) NO BREAKAGE OF CLAMP.	X	—
ENVIRONMENTAL CHARACTERISTICS					
DAMP HEAT, CYCLIC	EXPOSED AT +25 TO +65°C, 90 TO 96 % TOTAL 10 CYCLES (240 h)		1) INSULATION RESISTANCE: 100 MΩ MIN. (AT HIGH HUMIDITY) 2) INSULATION RESISTANCE: 1000 MΩ MIN. (AT DRY) 3) NO DAMAGE, CRACK AND LOOSENESS OF PARTS.	X	—
RAPID CHANGE OF TEMPERATURE	TEMPERATURE -55 → — → +85 → — °C TIME 30 → 3 → 30 → 3 min UNDER 5 CYCLES.		NO DAMAGE, CRACK AND LOOSENESS OF PARTS.	X	—
CORROSION SALT MIST	EXPOSED IN 5 % SALT WATER SPRAY FOR 48 h.		NO HEAVY CORROSION.	X	—
	COUNT	DESCRIPTION OF REVISIONS	DESIGNED	CHECKED	DATE
					
REMARK			APPROVED	MH. YAMANE	09.01.28
RoHS COMPLIANT			CHECKED	TO. KATAYAMA	09.01.27
Unless otherwise specified, refer to JIS C 5402.			DESIGNED	TS. KANEKO	09.01.27
			DRAWN	TS. KANEKO	09.01.27
Note QT:Qualification Test AT:Assurance Test X:Applicable Test			DRAWING NO.		ELC4-136795-40
	SPECIFICATION SHEET		PART NO.	ML51-LP-DTR178-D (40)	
	HIROSE ELECTRIC CO., LTD.		CODE NO.	CL337-0054-0-40	 1/1



NOTE 1 NO PLATING IS ON THE SIDE OF PART 7.

Rohs COMPLIANT

4	PTFE		8	POLYOLEFIN	(GRAY)
3	BERYLLIUM COPPER	GOLD PLATING	7	BRASS	NICKEL PLATING
2	BRASS	GOLD PLATING	6	BERYLLIUM COPPER	GOLD PLATING
1	BRASS	GOLD PLATING	5	STAINLESS STEEL	PASSIVATE
NO.	MATERIAL	FINISH . REMARKS	NO.	MATERIAL	FINISH . REMARKS

UNITS mm		SCALE 10 : 1	COUNT 	DESCRIPTION OF REVISIONS	DESIGNED	CHECKED	DATE
-------------	--	-----------------	-----------	--------------------------	----------	---------	------

HRS HIROSE ELECTRIC CO., LTD.	APPROVED : MH. YAMANE	09. 01. 28	DRAWING NO.	EDC4-136795-40	
	CHECKED : TO. KATAYAMA	09. 01. 27	PART NO.	ML51-LP-DTR178-D<40>	
	DESIGNED : TS. KANEKO	09. 01. 27	CODE NO.	CL337-0054-0-40	1/1
	DRAWN : TS. KANEKO	09. 01. 27			

Mouser Electronics

Authorized Distributor

Click to View Pricing, Inventory, Delivery & Lifecycle Information:

[Hirose Electric:](#)

[ML51-LP-DTR178-D\(40\)](#)