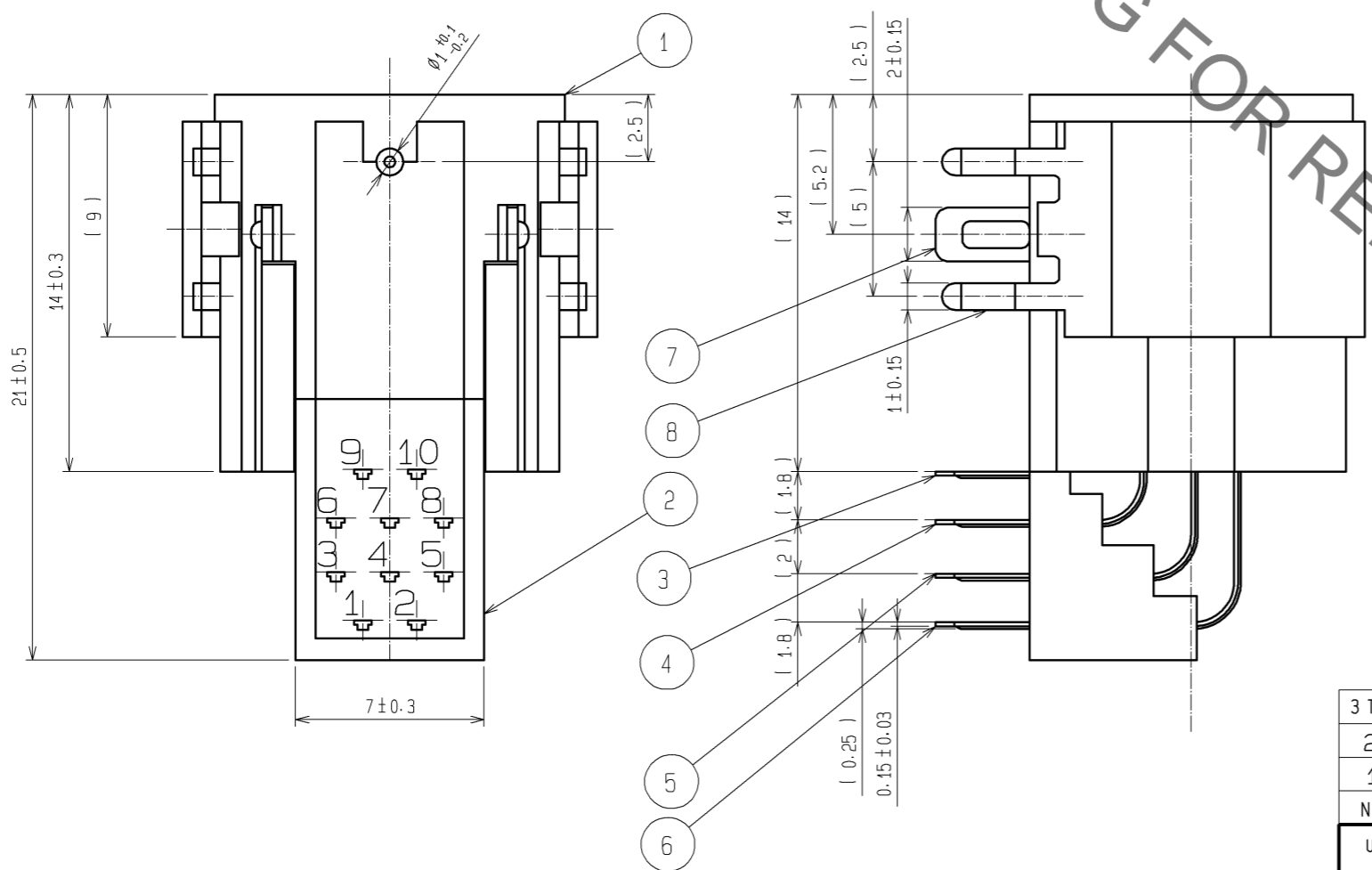
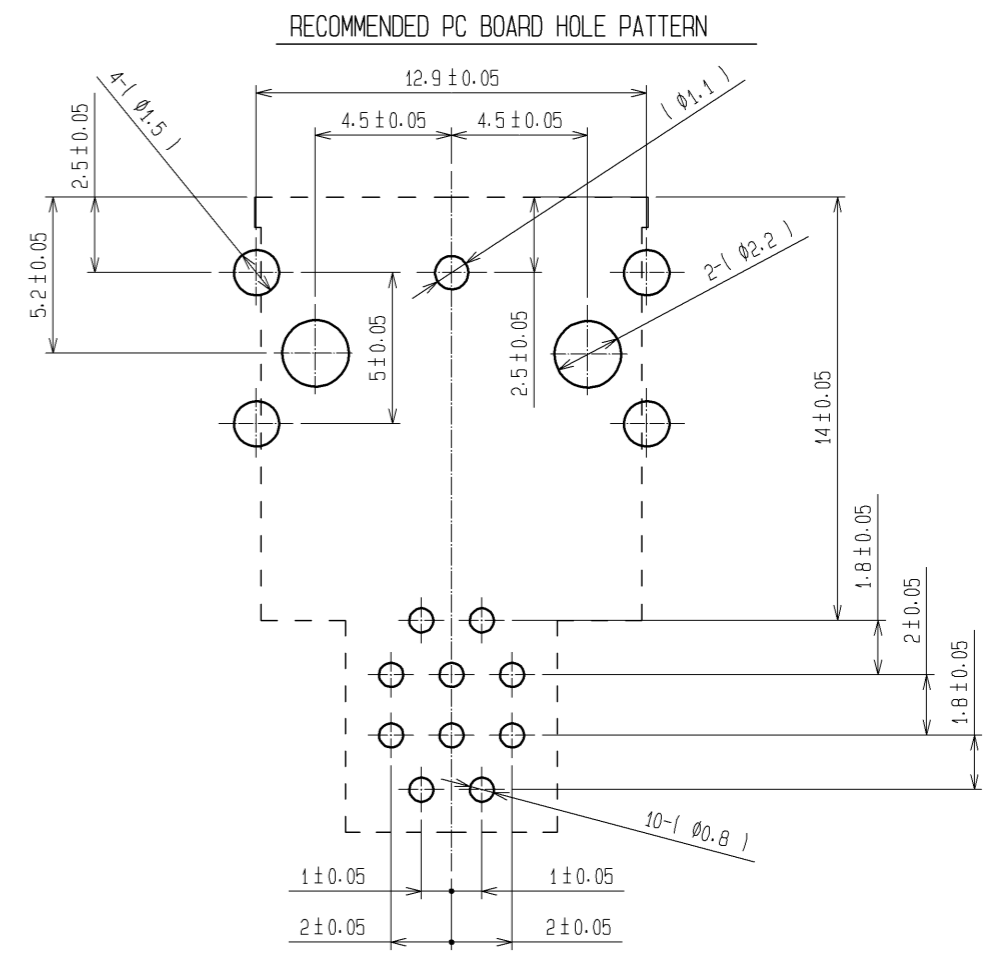
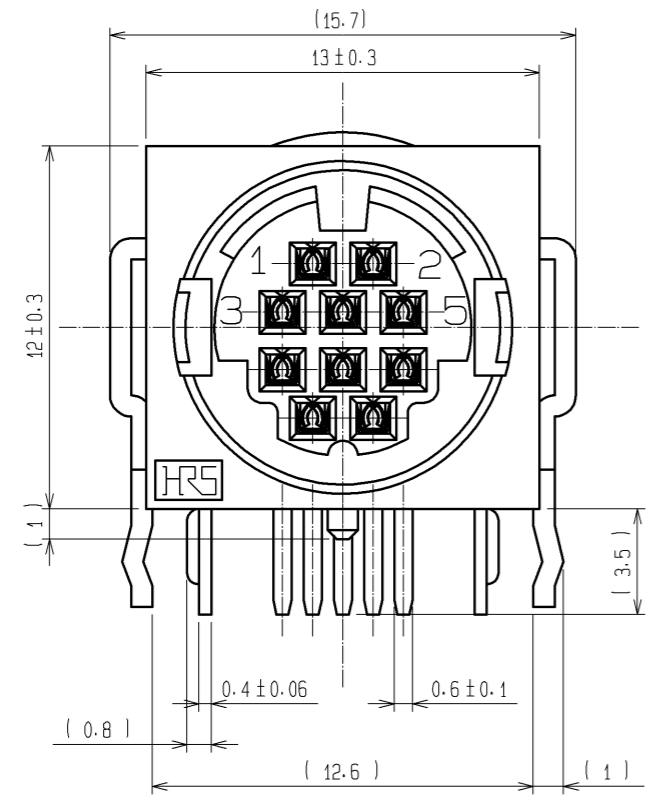


Dec.1.2021 Copyright 2021 HIROSE ELECTRIC CO., LTD. All Rights Reserved.
In case of consideration for using Automotive equipment / device which demand high reliability, kindly contact our sales window correspondents.



HRS DRAWING FOR REFERENCE

NOTE 1 CONTACT AREA : GOLD PLATING 0.2μm min.
DIP AREA : GOLD FLASH
OTHER : NICKEL PLATING

3 TO 6	PHOSPHOR BRONZE	1						
2	POLYBUTYLENE TEREPHTHALATE	UL94V-0 (BLACK)	8	BRASS	TIN PLATING			
1	POLYBUTYLENE TEREPHTHALATE	UL94V-0 (BLACK)	7	PHOSPHOR BRONZE	TIN PLATING			
NO.	MATERIAL	FINISH . REMARKS	NO.	MATERIAL	FINISH . REMARKS			
UNITS	mm	SCALE	4 : 1	COUNT	DESCRIPTION OF REVISIONS	DESIGNED	CHECKED	DATE
HIROSE ELECTRIC CO., LTD.		APPROVED :	MO. SATOH	07. 12. 12	DRAWING NO.	EDC3-026629-73		
		CHECED :	YH. YAMADA	07. 12. 12	PART NO.	HR12-10RC-10SDL (73)		
		DESIGNED :	DS. MATSUNE	07. 12. 12	CODE NO.	CL112-0511-8-73		
		DRAWN :	HN. TANAKA	07. 12. 06				

Mouser Electronics

Authorized Distributor

Click to View Pricing, Inventory, Delivery & Lifecycle Information:

[Hirose Electric:](#)

[HR12-10RC-10SDL\(73\)](#)