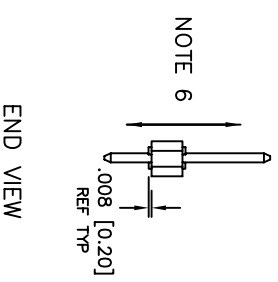
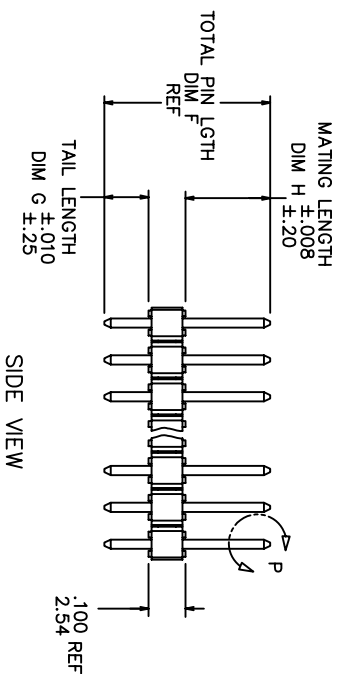
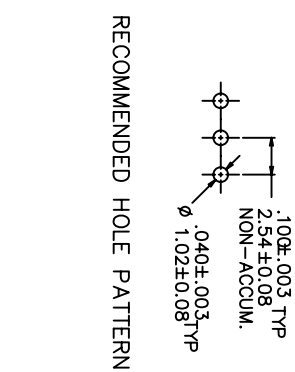
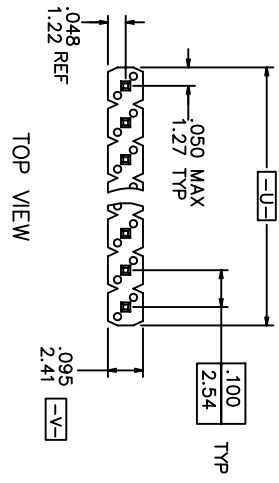


PRODUCT NUMBER
XXXXX-XXXXTLE

LEAD FREE OPTION
SEE NOTE 1,11
TUBE PACKAGING OPTION
SEE NOTE 1
HIGH TEMPERATURE PLASTIC
SEE NOTE 1
NO. OF POSITIONS
SEE NOTE 1
PIN PLATING
SEE SHEET 2
BASE PART NO.

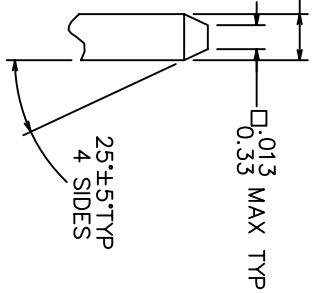
PRODUCT NUMBER
69190-XXXXX HALF

LEAD FREE OPTION
SEE NOTE 1,11
PACKAGING OPTION
SEE NOTE 1
HIGH TEMPERATURE PLASTIC
SEE NOTE 1
INDICATE DIFFERENT MATING LENGTH
AND TAIL LENGTH
NO. OF POSITIONS
SEE NOTE 1
PIN PLATING
SEE SHEET 2
BASE PART NO.



Φ .020/.51 (M) U (M) V (S)

NOTE 4
□ .025±.001
□ 0.64±.03 TYP



DETAIL P
TYP BOTH ENDS

mat'l. code	surface	tolerance	projection	product family
NOTES 2 & 3	ISO 1302	ISO 406 ISO 1101	INCH/MM	BERGSTIK
litr ecn no/dr date	tolerances unless otherwise specified	XX01/XX03		BERGSTIK® II HEADER
AM EX-A-13874 DCS 2012-12-12	angles	XX0106/XX0113	scale 1:1	.100/2.54 SR SELF-RET
AN EX-A-16105 ZK 2013-10-22	line of	XXXXXX02/XXXXXX05		sheet 1 of 4 size
AP EX-A-19414 HU 2014-11-13 0±.2°	dr	D. WHITTING		69190
AJ M06-0346 MHT 9/04/06 engr	T.HANNA	4/19/93		Product Customer Drawing
AK M08-0291 MHT 10/06/08 chr	T. BREWBAKER	4/19/93		
AL N11-0118 UZ 2011-04-11 ppd	T.HANNA	4/19/93		
sheet revision AP				
index sheet 1-4				

PIN PLATING CODES:

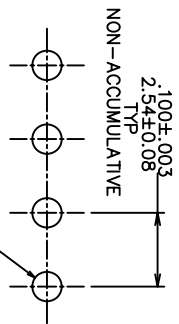
XXXXX-1YY	30u"/0.76u MIN (SEE NOTE 12) OVER 50u"/1.27u MIN NI
XXXXX-2YY	15u"/0.38u MIN (SEE NOTE 12) OVER 50u"/1.27u MIN NI
XXXXX-3YY	50u"/1.27u MIN (SEE NOTE 12) OVER 50u"/1.27u MIN NI
XXXXX-4YY	100u"/2.54u MIN Sn OVER 50u"/1.27u MIN NI (SEE NOTE 13)
XXXXX-4YYHLF	
XXXXX-5YY	15u"/0.38u MIN (SEE NOTE 12) OVER 50u"/1.27u MIN NI
XXXXX-6YY	30u"/0.76u MIN (SEE NOTE 12) OVER 50u"/1.27u MIN NI
XXXXX-7YY	30u"/0.76u MIN (SEE NOTE 12) OVER 50u"/1.27u MIN NI
XXXXX-8YY	15u"/0.38u MIN (SEE NOTE 12) OVER 50u"/1.27u MIN NI
XXXXX-9YY	15u"/0.38u MIN (SEE NOTE 12) OVER 50u"/1.27u MIN NI
XXXXX-0YY	30u"/0.76u MIN (SEE NOTE 12) OVER 50u"/1.27u MIN NI

NOTES

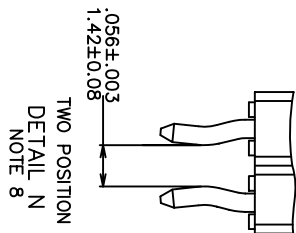
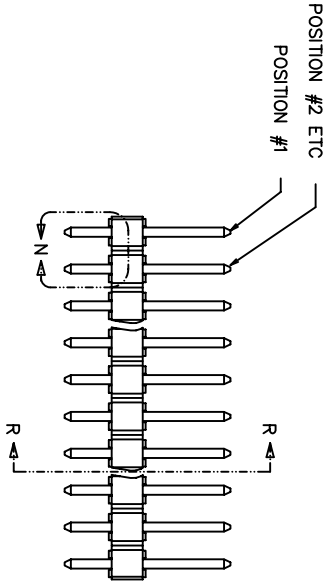
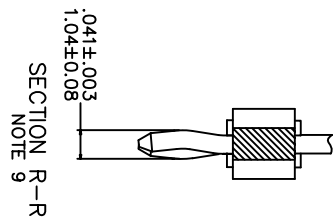
- PART NUMBER OPTIONS:
PIN PLATING CODES (SEE ABOVE)
HIGH TEMP. MATERIAL:
FOR HIGH-TEMPERATURE APPLICATIONS, SPECIFY AN "H" AT THE END OF THE PART NUMBER, AND PCT WILL BE SUPPLIED.
NUMBER OF POSITION:
ANY NUMBER OF POSITIONS FROM 2 THRU 36.
PACKAGING:
PACKAGED IN POLY BAGS.
EIGHT DIGIT PART NUMBERS FOLLOWED BY A "T" ARE PACKAGED IN TUBES. SEE SPECIFIC PART NUMBERS FOR AVAILABILITY.
EIGHT DIGIT PART NUMBERS FOLLOWED BY A "A" ARE PACKAGED IN TAPE AND REEL WITH PICKUP CAPS.
LEAD FREE:
ADD "HLF" SUFFIX AT THE END OF PART NUMBER FOR LEAD FREE OPTION, NOT AVAILABLE FOR -5YY, -5YYH, -6YY & -6YYH.
- BODY MATERIAL:
MANUFACTURER'S OPTION OF NYLON OR PCT, GLASS FIBER REINFORCED, FLAME RETARDENT PER UL-94V-0.
COLOR: BLACK. OR
MINERAL FILLED LCP. COLOR BLACK
FLAME RETARDENT PER UL-94V-0.
PART NUMBERS WITH "H" SUFFIX WILL WITHSTAND EXPOSURE TO 260° PEAK TEMPERATURE FOR 20 SECONDS IN WAVE SOLDER, INFRARED OR VAPOR PHASE SOLDER PROCESS.
PART NUMBERS WITHOUT "H" SUFFIX WILL WITHSTAND EXPOSURE TO 260° PEAK TEMPERATURE FOR WAVE SOLDER PROCESS.

- PIN MATERIAL: PHOS-BRONZE.
- MEASURED WITH PART IN RESTRAINED CONDITION.
- TWO SIDES OF PIN TIPS NOT PLATED. TYPICAL BOTH ENDS.
- 2LBS/0.9KG MIN PIN RETENTION IN EITHER DIRECTION.
- ±.010/0.25 TOL APPLIES TO ALL 'G' TAILS EXCEPT INDICATED PARTS ON TABLE WHERE +.010/0.25 -.000/0.00 APPLIES.
- DETAIL N DIMENSIONS APPLY TO 2 POSITION PARTS ONLY
- SECTION R-R DIMENSIONS ONLY APPLY TO RETENTION. PIN POSITIONS FOR 3 POSITION PARTS AND LARGER. RETENTION PIN POSITIONS LOCATED AT MANUFACTURER'S OPTION.
- 5LB/2.3KG MAX INSERTION FORCE AND .25LB/.1KG MIN RETENTION FORCE PER RETENTIVE PIN USING .062/1.57 THICK CIRCUIT BOARDS AND RECOMMENDED HOLE PATTERN.
- THESE PRODUCTS MEETS EUROPEAN UNION DIRECTIVES AND OTHER COUNTRY REGULATION AS DESCRIBED IN GS-22-008.
- PLATING OPTIONS:
PERFORMANCE PLATING WILL BE EITHER GOLD OR GXT ON POST OR TAIL, OPTIONALLY (78~295u"/2~7.5u) TIN ON TAIL.
- THIS PRODUCT HAS 100% TIN PLATING IN THE INTERFACE AND HAS NOT BEEN TESTED FOR WHISKER GROWTH IN ALL INTERCONNECT ENVIRONMENTS."

mat'l. code	surface	tolerance	projection	product family
AP	ISO 1302	ISO 406 SO 1101	INCH/MM	BERGSTIK
ltf	ecn no	date	tolerances unless otherwise specified	title
			XXH/XXL3 XXH/XXL13	BERGSTIK II HEADER
			angles	.100/2.54 SR SELF-RET
			line of	sheet no
			0±.2°	69190
			dr	sheet 2 of 4 size
			D. WHITING	A3
			engr	
			T.HANNA	
			chr	
			T. BREWBAKER	
			4/19/93	
			ppd	
			T.HANNA	
			4/19/93	
sheet	revision			
index	sheet			



RECOMMENDED HOLE PATTERN



mat'l. code	surface	tolerance	projection	product family
itr	ISO 1302	ISO 406	INCH/MM	BERGSTIK
ecn no	ISO 1101	ISO 1101	scale 1:1	BERGSTIK II HEADER
dr	tolerances unless otherwise specified	XX#/X#/X#		.100/2.54 SR SELF-RET
AP	angles	line of		dwg no 69190
	0±.2°	XXXXXX/XXXX/XXXX		sheet 3 of 4 size A3
	dr	D. WHITTING		type Product Customer Drawing
	engr	T.HANNA		
	chr	T. BREWBAKER		
	appp	T.HANNA		
sheet index	revision			



FCIconnect.com

Copyright FCI

PRODUCT NUMBER	TOTAL PIN LENGTH		TAIL LENGTH		MATING LENGTH		PACKAGING	NOTE	LF OPTION
	DIM F	METRIC	DIM G	METRIC	DIM H	METRIC			
69190-XXX	0.450	11.43	0.120	3.05	0.230	5.84	POLY BAGS/TUBES		NOTE 1,11
72348-XXX	0.515	13.08	0.120	3.05	0.295	7.49	POLY BAGS/TUBES		
78229-XXX	0.538	13.67	0.120	3.05	0.318	8.08	POLY BAGS/TUBES		
78250-XXX									
78538-XXX	0.620	15.75	0.120	3.05	0.400	10.16	POLY BAGS		
78594-XXX	0.760	19.30	0.120	3.05	0.540	13.72	POLY BAGS		
79429-XXX	0.695	17.65	0.120	3.05	0.475	12.07	POLY BAGS		
79978-XXX	0.450	11.43	0.120	3.05	0.230	5.84	POLY BAGS/TUBES		
86505-XXX	0.440	11.18	0.120	3.05	0.220	5.59	POLY BAGS		
87036-XXX	0.830	21.08	0.120	3.05	0.610	15.49	POLY BAGS		
87068-XXX	0.530	13.46	0.115	2.92	0.315	8.00	POLY BAGS		
87280-XXX	1.000	25.40	0.120	3.05	0.780	19.81	POLY BAGS		
87452-XXX	0.840	21.34	0.120	3.05	0.620	15.75	POLY BAGS		
87453-XXX	0.990	25.15	0.120	3.05	0.770	19.56	POLY BAGS		
87918-XXX	0.730	18.54	0.120	3.05	0.510	12.95	POLY BAGS		
90603-XXX	0.430	10.92	0.100	2.54	0.230	5.84	POLY BAGS		
90610-XXX	0.927	23.55	0.100	2.54	0.727	18.47	POLY BAGS		
94549-XXX	0.415	10.54	0.085	2.16	0.230	5.84	POLY BAGS		
69190-XXX01HLF	0.425	10.80	0.095	2.41	0.230	5.84	POLY BAGS		
69190-XXX02HLF	0.378	9.59	0.120	3.05	0.157	4.00	POLY BAGS/TUBES		NOTE 1,11

mat'l. code		surface		tolerance		projection		product family	
litr ecn no/dr		ISO 1302		ISO 406		INCH/MM		BERGSTIK	
date		tolerances unless otherwise specified		ISO 1101		scale 1:1		BERGSTIK II HEADER	
angles		line of		XXH/XXL3		sheet no		100/2.54 SR SELF-RET	
0±.2°		XXXH00/XXH01		XXH00/XXH01		sheet4 of 4		size	
dr		D. WHITING		4/19/93		type		Product Customer Drawing	
engr		T.HANNA		4/19/93		type		Product Customer Drawing	
chr		T. BREWBAKER		4/19/93		type		Product Customer Drawing	
appp		T.HANNA		4/19/93		type		Product Customer Drawing	
sheet revision		sheet		sheet		sheet		sheet	
index		sheet		sheet		sheet		sheet	

PDS: Rev :AP

STATUS:Released

Printed: Nov 13, 2014