



## 特点 Features

- 高性能电源滤波器  
High performance filters
- 泄漏电流小  
Low leakage current

## 应用 Applications

- 用于大多数数字设备(尤其是开关电源), 可用来抑制连续或间隙性脉冲干扰, 尤其适用于低阻抗负载场合。  
For digital systems(particularly for switching power supplies) to suppress the continuity or intermittent pulse interference. Specially for low impedance loads

## 技术参数 Technical Data

额定电压 Rated Voltage	120/250VAC
工作频率 Operating Frequency	50/60Hz
额定电流 Rated Current	2A-80A
耐压试验:(一分钟) Test Voltage (1min)	1500VDC (line/line) 1500VAC (line/ground)
气候类别 Climatic Category	25/085/21

型号 Model	端子方式 Terminal		额定电流 Rated Current (A)	接地电容量 Ground Capacitance (nF)	泄漏电流 Leakage Current ≤(mA)	放电电阻 Discharge Resistance (MΩ)	电路图 Circuit Diagram fig.	外形尺寸 Dimension fig. 见附录(34页) See appendix P34
	入 Input	出 Output						
DL-2T1	⏏	⏏	2	2.2	0.5	1	1	A3
DL-3T1	⏏	⏏	3	3.3	0.5	1.5	1	A3
DL-3T3	⏏	⏏	3	3.3	0.5		3	B1
DL-6T1	⏏	⏏	6	3.3	0.5	1.5	2	A3
DL-6T112	⏏	⏏	6	2.2	0.5	0.47	1	A4
DL-10T1	⏏	⏏	10	3.3	0.5	1.5	2	A3
DL-10T11	⏏	⏏	10	3.3	0.5	1	2	A4
DL-12T1	⏏	⏏	12	4.7	0.8	1	2	A6
DL-15T1	⏏	⏏	15	3.3	0.5	1.5	2	D1
DL-16T12	⏏	⏏	16	3.3	0.5	0.68	2	D4
DL-20T1	⏏	⏏	20	4.7	0.8	1.5	2	D2
DL-25T11	⏏	⏏	25	3.3	0.5	0.68	2	F4
DL-30T11	⏏	⏏	30	3.3	0.5	0.68	2	F3
DL-50T3	⏏	⏏	50	6.8	1.0	1.5	2	E4
DL-80T1	⏏	⏏	80	4.7	0.8	0.68	2	G6

电原理图 Typical Circuit Diagram

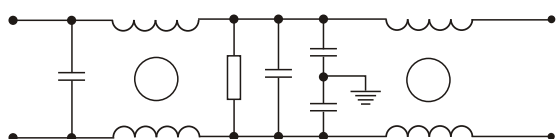


fig.1

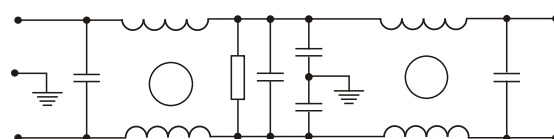


fig.2

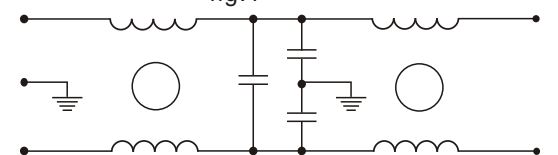


fig.3

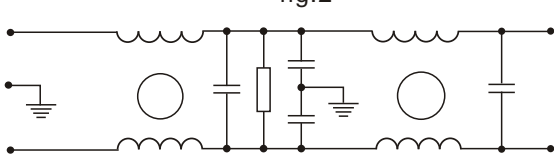
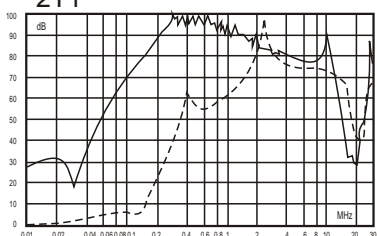


fig.4

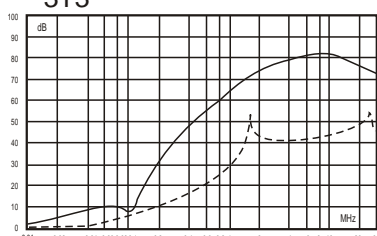
插入损耗 Insertion Loss in dB

(50 Ω 测量系统, IEC/CISPR No.17 号出版物 Measured in 50 Ω system, as IEC/CISPR No. 17)

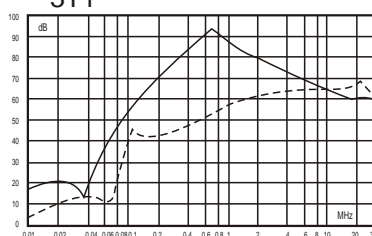
2T1



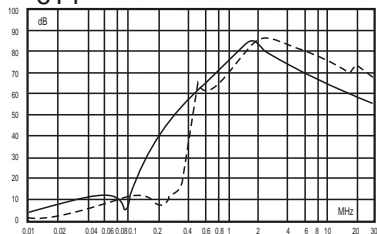
3T3



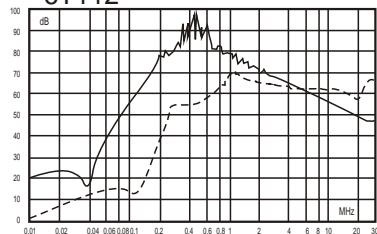
3T1



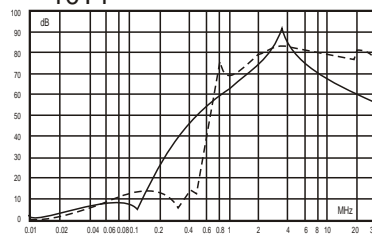
6T1



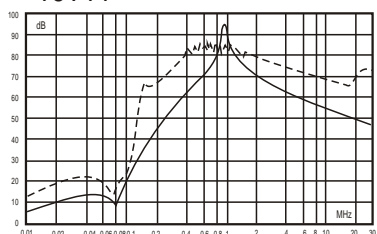
6T112



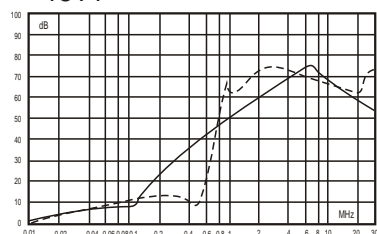
10T1



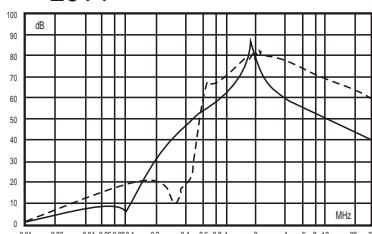
10T11



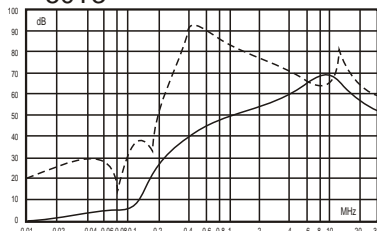
15T1



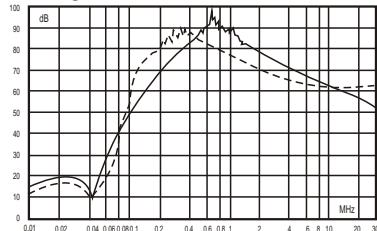
20T1



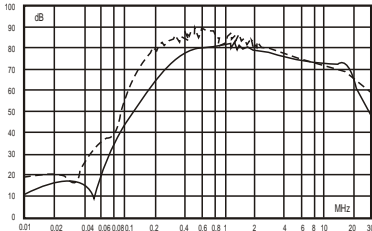
50T3



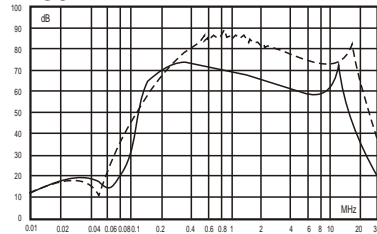
16T12



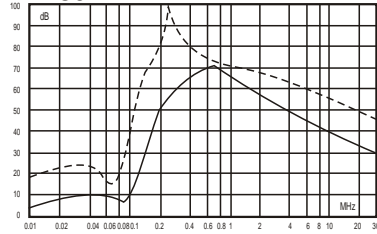
25T11



30T11



80T1



—— 共模(Common Mode)  
 - - - - 差模(Differential Mode)