



特点 Features

- 体积小，常规通用
Compact unit, general purpose
- 对三相平衡不平衡负载均有效
Effective for both balanced and unbalanced three phase loads

应用 Applications

- 抑制沿电源线传输的工业无线电干扰
Suppress the industrial radio interference along power lines

技术参数 Technical Data

| | |
|----------------------------------|--|
| 额定电压 Rated Voltage | 250/440 VAC |
| 工作频率 Operating Frequency | 50/60Hz |
| 额定电流 Rated Current | 5A~600A |
| 耐压试验（一分钟） Test Voltage (1min) | 1500 VDC (line/line) 2250 VDC (line/ground) |
| 气候类别 Climatic Category | 25/085/21 |

| 型号 Model DL- | 端子方式 Terminal | | 额定电流 Rated Current (A) | 接地电容量 Ground Capacitance (nF) | 放电电阻 Discharge Resistance (M Ω) | 电路图 Circuit Diagram fig. | 外形尺寸 Dimension fig. |
|--------------------|---------------|----------|---------------------------------|--|--|--------------------------------|------------------------|
| | 入 Input | 出 Output | | | | | |
| DL-5EA | | | 5 | 6.8 | | 1 | 1 |
| DL-10EA | | | 10 | 6.8 | | 1 | 1 |
| DL-5EAX1 | | | 5 | 6.8 | | 1 | 2 |
| DL-10EAX1 | | | 10 | 6.8 | | 1 | 2 |
| DL-15EA3 | | | 15 | 6.8 | | 2 | 5 |
| DL-20EA3 | | | 20 | 6.8 | | 2 | 5 |
| DL-25EA3 | | | 25 | 6.8 | | 2 | 5 |
| DL-30EA3 | | | 30 | 6.8 | | 2 | 5 |
| DL-40EA3 | | | 40 | 10 | 1 | 2 | 6 |
| DL-50EA3 | | | 50 | 10 | 1 | 2 | 6 |
| DL-80EA1 | | | 80 | 10 | 0.68 | 2 | 3 |
| DL-100EA1 | | | 100 | 13.6 | 0.44 | 2 | 4 |
| DL-150EA1 | | | 150 | 200 | 0.44 | 2 | 3 |
| DL-200EA5 | | | 200 | 200 | 0.68 | 3 | 3 |
| DL-300EA5/60 | | | 300 | 690 | 0.68 | 4 | 7 |
| DL-600EA5/60 | | | 600 | 690 | 0.68 | 4 | 8 |



电原理图 Typical Circuit Diagram

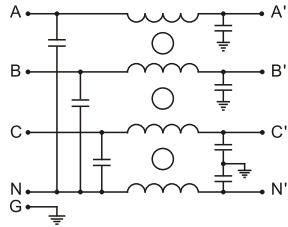


fig.1

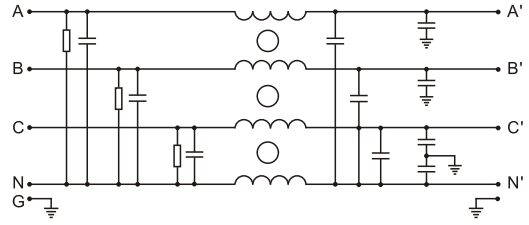


fig.2

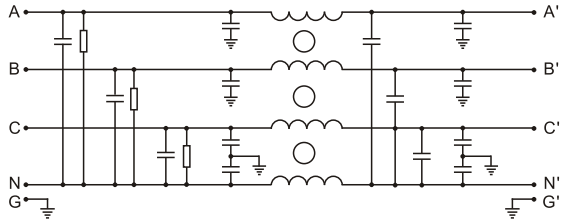


fig.3

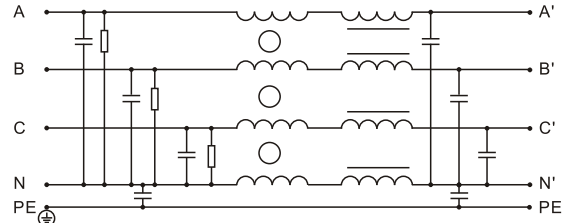


fig.4

外形尺寸 Outline Drawing and Dimensions (mm)

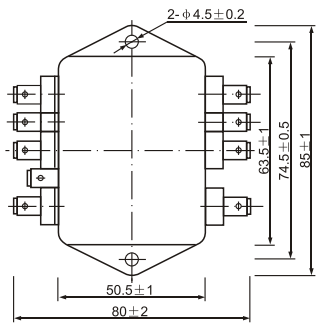


fig.1

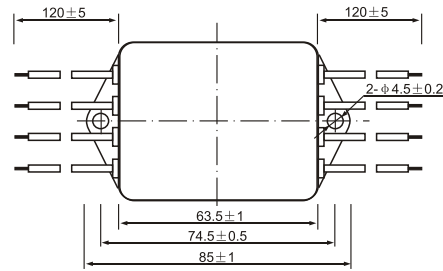
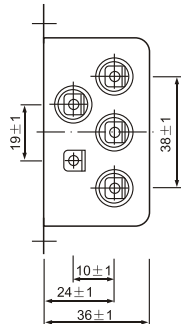


fig.2

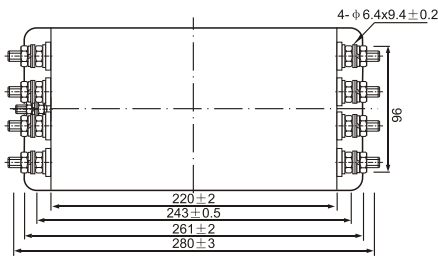
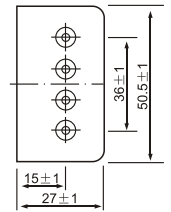


fig.3

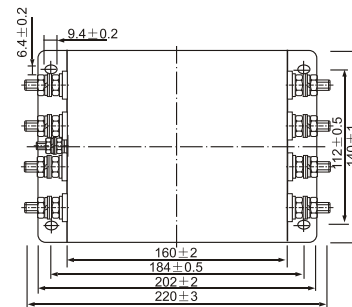
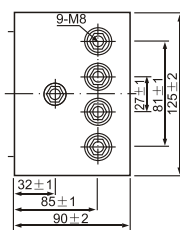


fig.4

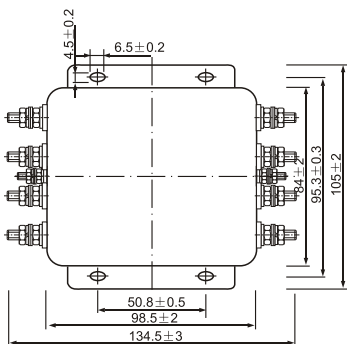
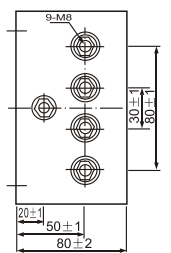


fig.5

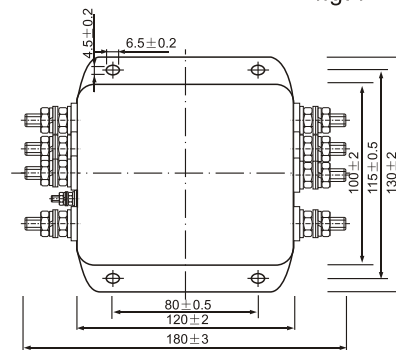
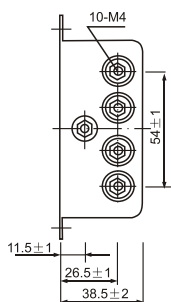
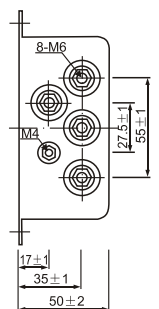


fig.6



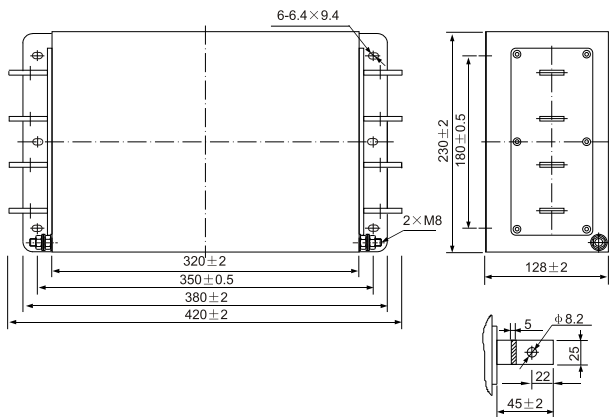


fig.7

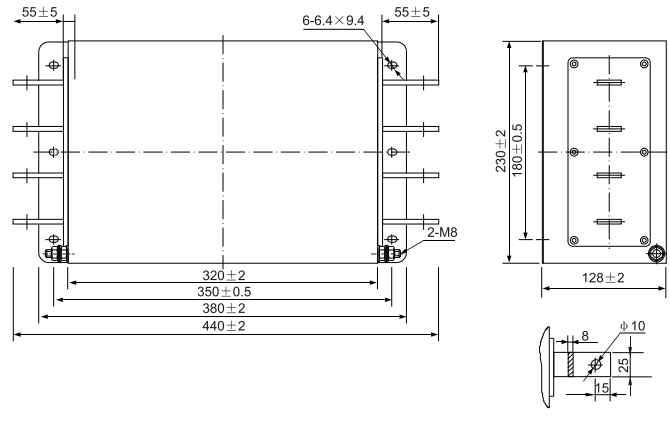


fig.8

插入损耗 Insertion Loss in dB

(50 Ω 测量系统, IEC/CISPR No.17 号出版物 Measured in 50 Ω system, as IEC/CISPR No.17)

