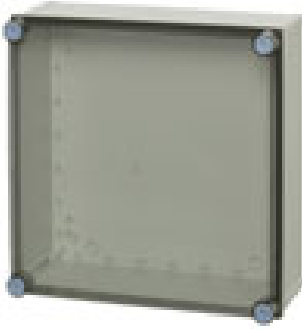


QUICK CAB PCQ 404017 T



Sample photo

Order symbol: CAB PCQ 404017 T
Product nbr: 8113088
Description: Cabinet, PC
Remarks: Smoked transparent cover

EAN: 6418074011114
EI. number:
 Finland: 3421928
 Electric No. Italy: 7682050
 Electric No. Sweden: 2540107

Including: Base with screws for mounting plate/DIN-rail, internal corner plugs, cover with PUR gasket and CS 12137 cover screws.

Dimensions:		Length	Width	Height	Accessories:	
mm:		400	400	170	EKIV 37	DIN-35 Mounting rail
inch:		15.7	15.7	6.7	FP A 44	Swing-out door/Front plate
Materials:					MB 12225 AL	Swing door set
Material:		Polycarbonate			FP 18x2-44	Front plate
Base colour:		RAL 7035 -light grey			EKI EXT 44	Extension frame
Cover screws material:		Polyamide			DRF 43/44	DIN rail frame set
Cover colour:		Smoked grey			PAT 12040	Hinge set
Cover screws colour:		RAL 5023			Rating:	
Gasket material:		Polyurethane			Ingress Protection (EN 60529):	IP66/IP67
Temperatures:					Impact Resistance (EN 62262):	IK08
Temperature °C (short term):		-40 ... 120 °C			Electrical insulation:	Totally insulated
Temperature °C (continuous):		-40 ... 80 °C			Halogen free (DIN/VDE 0472, Part 815):	1
Temperature °F (short term):		-40 ... 250 °F			UV resistance:	UL 508
Temperature °F (continuous):		-40 ... 175 °F			Flammability Rating:	UL 746C 5"
Accessories:					Glow Wire Test (IEC 695-2-1) °C:	960
EKIV 44	Mounting plate				NEMA Class:	NEMA 1, 4, 4X, 12, 13
Certificates:					Germanischer Lloyd (GL)	
					SGS Fimko	
					Lloyds Register of Shipping (LR)	
					Gost R	

