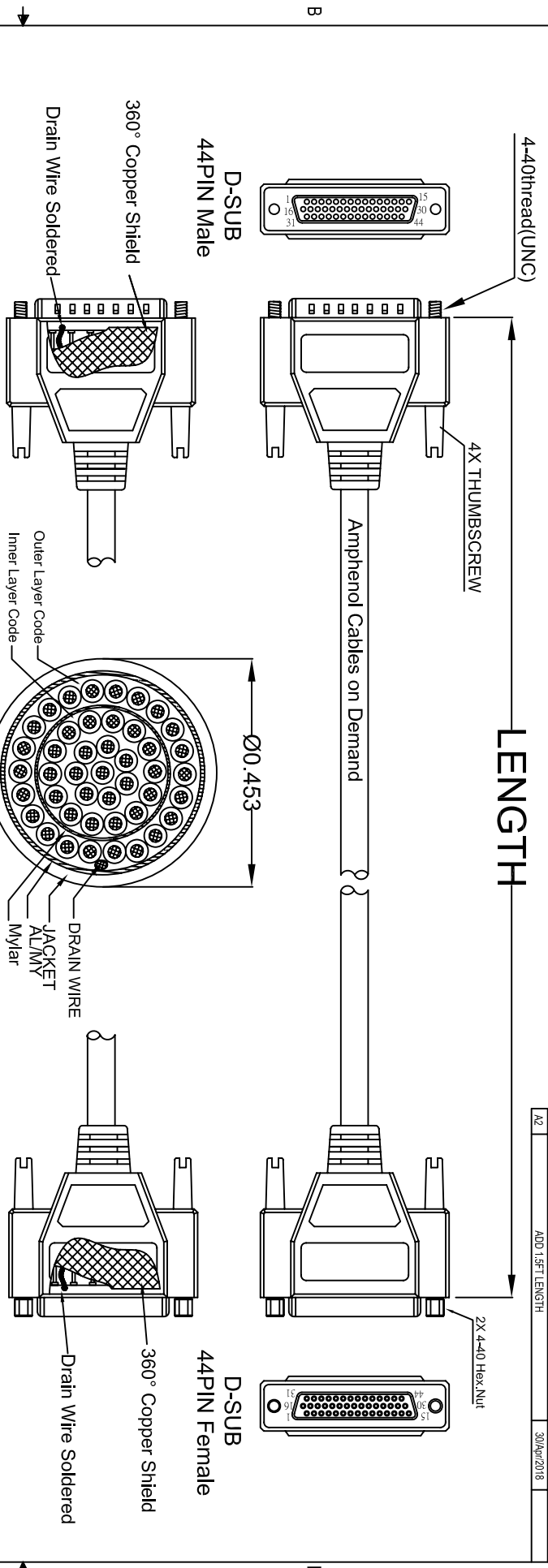


THE INFORMATION CONTAINED IN THIS DRAWING IS THE SOLE PROPERTY OF AMPHENOL CABLES ON DEMAND. ANY REPRODUCTION OR DISCLOSURE TO THIRD PARTIES IN PART OR WHOLE, WITHOUT THE EXPRESS WRITTEN PERMISSION OF AMPHENOL CABLES ON DEMAND IS PROHIBITED.

| REV. | DESCRIPTION | REVISIONS | DATE | APPROVED |
|------|------------------|-----------|-------------|----------|
| A | NEW RELEASE | | 03/01/07 | |
| A1 | Add wiring color | | 16/JAN/2012 | |
| A2 | ADD 1.5FT LENGTH | | 30/APR/2018 | |



SEC A-A

LENGTH & P/N Table

| LENGTH | P/N | Cable Color |
|-----------------|---------------------|-------------|
| 1.5FT ±0.8 inch | CS-DSDHD44MF0-001.5 | GREY |
| 2.5FT ±1 inch | CS-DSDHD44MF0-002.5 | GREY |
| 5FT ±2 inch | CS-DSDHD44MF0-005 | GREY |
| 10FT ±3 inch | CS-DSDHD44MF0-010 | GREY |
| 15FT ±3 inch | CS-DSDHD44MF0-015 | GREY |
| 25FT ±4 inch | CS-DSDHD44MF0-025 | GREY |
| 50FT ±8 inch | CS-DSDHD44MF0-050 | GREY |

| PIN OUT: 1 TO 1 | | | Inner Layer Code | | | Outer Layer Code | | |
|-----------------|--------|--------------|------------------|--------|--------------|------------------|--------|------------|
| Male | Female | Color | Male | Female | Color | Male | Female | Color |
| PIN1 | PIN1 | Black | PIN23 | PIN23 | Black | SHIELD | SHIELD | Drain Wire |
| PIN2 | PIN2 | Brown | PIN24 | PIN24 | Brown | | | |
| PIN3 | PIN3 | Red | PIN25 | PIN25 | Red | | | |
| PIN4 | PIN4 | Orange | PIN26 | PIN26 | Orange | | | |
| PIN5 | PIN5 | Yellow | PIN27 | PIN27 | Yellow | | | |
| PIN6 | PIN6 | Green | PIN28 | PIN28 | Green | | | |
| PIN7 | PIN7 | Blue | PIN29 | PIN29 | Blue | | | |
| PIN8 | PIN8 | Purple | PIN30 | PIN30 | Purple | | | |
| PIN9 | PIN9 | Gray | PIN31 | PIN31 | Gray | | | |
| PIN10 | PIN10 | White | PIN32 | PIN32 | White | | | |
| PIN11 | PIN11 | Pink | PIN33 | PIN33 | Pink | | | |
| PIN12 | PIN12 | Light Green | PIN34 | PIN34 | Light Green | | | |
| PIN13 | PIN13 | Black/White | PIN35 | PIN35 | Black/White | | | |
| PIN14 | PIN14 | Brown/White | PIN36 | PIN36 | Brown/White | | | |
| PIN15 | PIN15 | Red/White | PIN37 | PIN37 | Red/White | | | |
| PIN16 | PIN16 | Orange/White | PIN38 | PIN38 | Orange/White | | | |
| PIN17 | PIN17 | Green/White | PIN39 | PIN39 | Green/White | | | |
| PIN18 | PIN18 | Blue/White | PIN40 | PIN40 | Blue/White | | | |
| PIN19 | PIN19 | Purple/White | PIN41 | PIN41 | Purple/White | | | |
| PIN20 | PIN20 | Red/Black | PIN42 | PIN42 | Red/Black | | | |
| PIN21 | PIN21 | Orange/Black | PIN43 | PIN43 | Orange/Black | | | |
| PIN22 | PIN22 | Yellow/Black | PIN44 | PIN44 | Yellow/Black | | | |



UNLESS OTHERWISE SPECIFIED DIMENSIONS ARE IN INCHES TOLERANCES ARE:

| | | | |
|----------|-------|--------|------|
| DECIMALS | ±.X | ANGLES | ±.X° |
| .X | ±.XX | | |
| XXX | ±.XXX | | |

THIRD ANGLE PROJECTION

| | | | |
|-----------|-------------|----------|-------------|
| DATE | 16/JAN/2012 | DATE | 16/JAN/2012 |
| DRAWN | LF | CHECKED | BA |
| APPROVALS | | RESP ENG | |
| MFG ENG | | | |

Amphenol Cables on Demand
20 VALLEY ST. ENDCOTT, NY 13760

ASM CBL Deluxe High Density
44PIN D-Sub MF

SIZE: DWG. NO. CS-DSDHD44MF0-XXX
A

SCALE: SHEET OF A2

NOTES: UNLESS OTHERWISE SPECIFIED

Mouser Electronics

Authorized Distributor

Click to View Pricing, Inventory, Delivery & Lifecycle Information:

[Amphenol:](#)

[CS-DSDHD44MF0-010](#) [CS-DSDHD44MF0-002.5](#) [CS-DSDHD44MF0-005](#) [CS-DSDHD44MF0-015](#) [CS-DSDHD44MF0-025](#)