

**PLEASE CHECK WWW.MOLEX.COM FOR LATEST PART INFORMATION**

**Part Number:** [5600200420](#)  
**Status:** **Active**  
**Overview:** [DuraClik™ Connector System](#)  
**Description:** [DuraClik™ Wire-to-Board Header, Single Row, Vertical, 4 Circuits, Tin \(Sn\) Over Nickel, Natural](#)

**Documents:**

[3D Model](#) [Packaging Specification PK-560020-002-JP-001 \(PDF\)](#)  
[Drawing \(PDF\)](#) [RoHS Certificate of Compliance \(PDF\)](#)  
[Product Specification PS-502351-001-001 \(PDF\)](#)

**General**

Product Family	PCB Headers
Series	<a href="#">560020</a>
Application	Signal, Wire-to-Board
Comments	The Operating Temperature Range when used with DuraClik series 502351 is -40°C to +105°C. It is -40°C to 125°C when used with DuraClik ISL series 560123 or TPA series 505151.
Overview	<a href="#">DuraClik™ Connector System</a>
Product Name	DuraClik™
UPC	887191747101

**Physical**

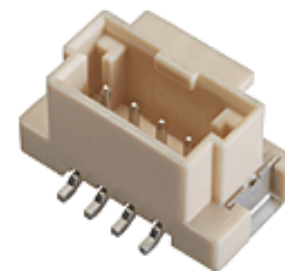
Breakaway	No
Circuits (Loaded)	4
Circuits (maximum)	4
Color - Resin	Natural
Durability (mating cycles max)	30
First Mate / Last Break	No
Glow-Wire Compliant	No
Keying to Mating Part	None
Lock to Mating Part	Yes
Material - Metal	Copper Alloy
Material - Plating Mating	Tin over Nickel
Material - Resin	Polyamide
Net Weight	0.674/g
Number of Rows	1
Orientation	Vertical
PCB Locator	No
PCB Retention	Yes
Packaging Type	Embossed Tape on Reel
Pitch - Mating Interface	2.00mm
Polarized to Mating Part	Yes
Polarized to PCB	Yes
Stackable	No
Temperature Range - Operating	-40°C to +105°C, -40°C to +125°C
Termination Interface: Style	Surface Mount

**Electrical**

Current - Maximum per Contact	3.0A
Voltage - Maximum	125V AC (RMS)/DC

**Solder Process Data**

Duration at Max. Process Temperature (seconds)	004
Lead-freeProcess Capability	REFLOW



*Series image - Reference only*

**EU ELV**

**Compliant**

**EU RoHS**

**Compliant**

**REACH SVHC**

Not Contained Per - ED/21/2016 (20 June 2016)

**Halogen-Free**

**Status**

**Not Low-Halogen**

**Need more information on product environmental compliance?**

Email [productcompliance@molex.com](mailto:productcompliance@molex.com)  
Please visit the [Contact Us](#) section for any non-product compliance questions.

China ROHS

ELV

RoHS Phthalates

Green Image

Compliant

Not Contained

**Search Parts in this Series**

[560020 Series](#)

**Mates With**

DuraClik™ Crimp Housings [502351](#) , [560123](#) , [505151](#)

Max. Cycles at Max. Process Temperature	001
Process Temperature max. C	255

**Material Info**

**Reference - Drawing Numbers**

Packaging Specification	PK-560020-002-JP-001
Product Specification	PS-502351-001-001
Sales Drawing	SD-560020-001, SD-560020-003

This document was generated on 12/13/2016

**PLEASE CHECK [WWW.MOLEX.COM](http://WWW.MOLEX.COM) FOR LATEST PART INFORMATION**