



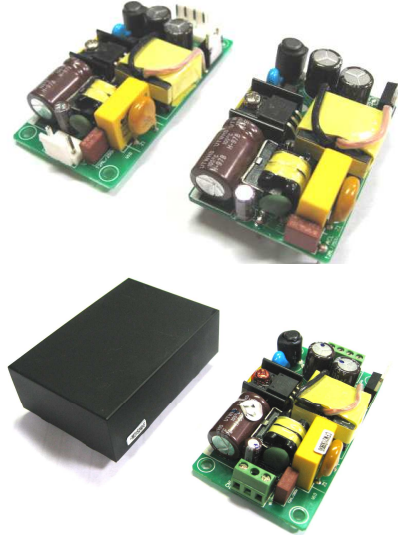
# CFM21 SERIES

## 20 WATT SINGLE OUTPUT AC-DC MODULES



### Features

- \* Universal Input Range 90~264VAC
- \* Miniature Size Low Profile 0.8"
- \* Industry-Standard Pin Out
- \* Efficiency to 85%
- \* Option for On-Board, Connector, Screw Terminal or Encapsulated type
- \* Continuous Short Circuit Protection
- \* Over Voltage Protection
- \* No Load Input Power < 0.3W
- \* Leakage Current < 0.1mA
- \* IEC/EN/UL 60601-1 Medical Safety Approved



MODEL	INPUT VOLTAGE	OUTPUT VOLTAGE	MIN. LOAD	MAX. LOAD	OUTPUT RATED POWER	RIPPLE & NOISE	VOLTAGE ACCURACY	% EFF.
CFM21S033	90~264 VAC	3.3 V	0	4.0 A	13.2 W	50 mV	±1%	75%
CFM21S050	90~264 VAC	5.0 V	0	4.0 A	20.0 W	50 mV	±1%	80%
CFM21S090	90~264 VAC	9.0 V	0	2.3 A	20.7 W	90 mV	±1%	81%
CFM21S120	90~264 VAC	12 V	0	1.7 A	20.4 W	100 mV	±1%	83%
CFM21S150	90~264 VAC	15 V	0	1.4 A	21.0 W	100 mV	±1%	84%
CFM21S240	90~264 VAC	24 V	0	0.9 A	21.6 W	100 mV	±1%	85%

Specifications are subject to change without notice.

章 節	CFM-14
頁 次	1-1

## Specifications

### INPUT SPECIFICATIONS:

Voltage .....	90~264Vac
	120~370Vdc
Frequency .....	47 to 63Hz
Input Current .....	0.3 to 0.5A
Inrush Current .....	Cold Start@25°C 40A max. @230Vac
Leakage Current .....	0.1mA max.

### OUTPUT SPECIFICATIONS:

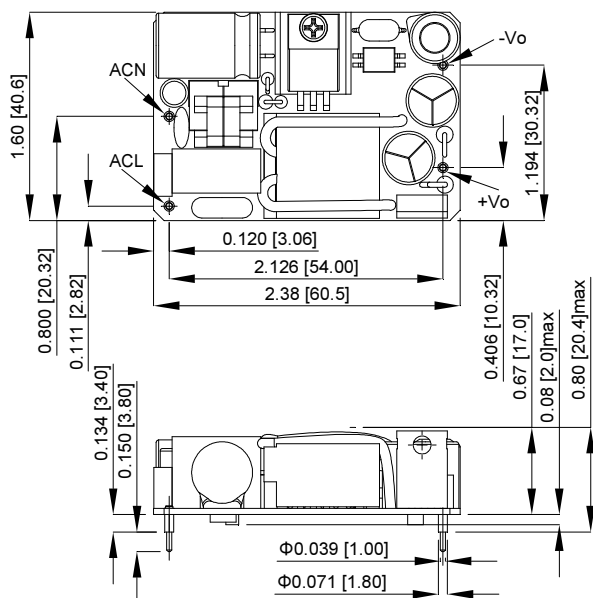
Voltage Accuracy: .....	±1.0% max.
Line Regulation (note3) .....	±0.5% max.
Load Regulation (note4) .....	±1.0% max.
Hold-up Time .....	10ms typ. @115Vac
Short Circuit Protection .....	Continuous
Over Voltage Protection (TVS) .....	115%-140% of Nominal Output Voltage

### GENERAL SPECIFICATIONS:

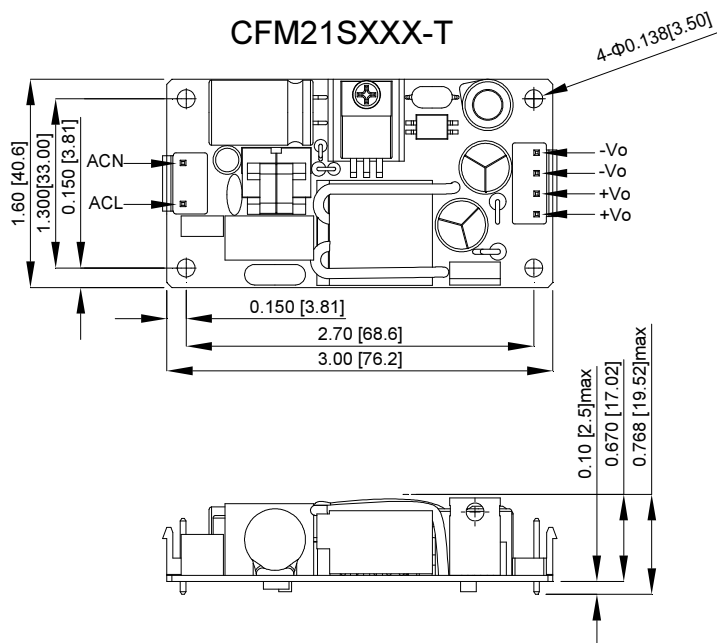
Efficiency .....	See Table
Switching Frequency .....	100KHz typ.
Isolation .....	Input to Output = 5656VDC
Operating Temperature .....	-25 ~ 70°C (with De-rating)
Storage Temperature .....	-40~85°C
Cooling .....	Natural Convection
Humidity .....	93% RH max. Non Condensing
MTBF .....	MIL-HDBK-217F, GB 650Khrs min.
Dimensions .....	2.38x1.60x0.80inches (60.5x40.6x20.4mm)
	-T: 3.00x1.60x0.77inches (76.2x40.6x19.5mm)
	-E: 2.53x1.74x0.80inches (64.2x44.2x20.4mm)
	-S: 3.00x1.60x0.77inches (76.2x40.6x19.5mm)
Weight .....	50g, 55g (-T, -S), 105g (-E)

### Mechanical Specification

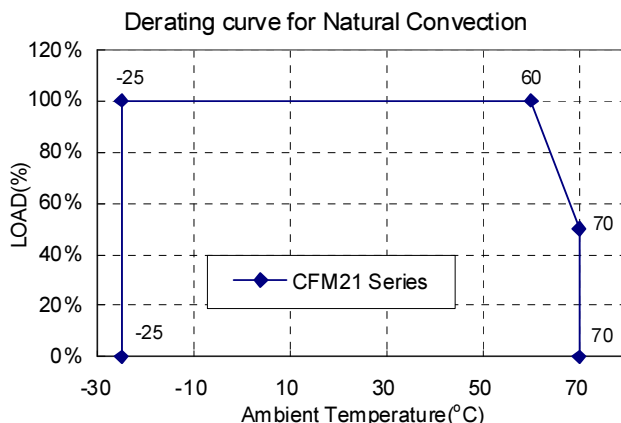
CFM21SXXX



CFM21SXXX-T



## CFM21 Series De-rating Curve

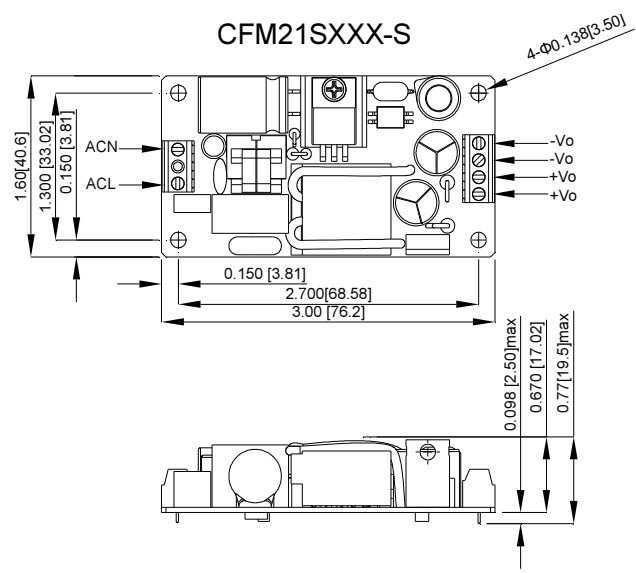
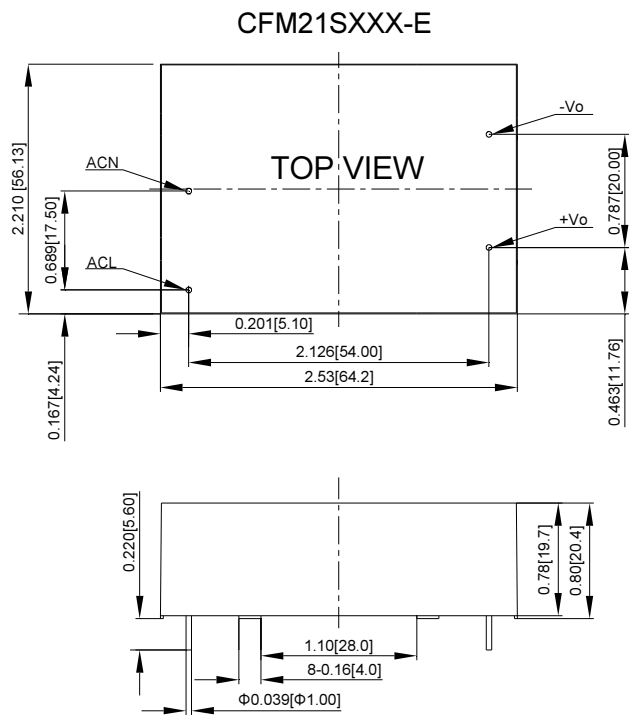


### SAFETY AND EMISSION:

CE Directive .....	2004/108/EC, 93/42/EEC
Emissions ...	EN60601-1/EN61204-3/EN55032/CISPR Class B, EN55024
Safety Approvals .....	IEC/EN/UL 60601-1

### NOTE:

1. Voltage accuracy is set of 100% rated load.
2. Add a 0.1uF ceramic capacitor and a 10uF E.L. capacitor to output for ripple&noise measuring @20MHz BW.
3. Line regulation is measured from high line to low line with full load.
4. Load regulation is measured from 10% to 100% full load.
5. T Version Connection: JST B3P-VH / B4P-VH or equivalent.
6. S Version Connection: DECA MB332-381A or equivalent.



All Dimensions In Inches[mm]  
 Tolerance: Inches:x.xx= ±0.02,x.xxx= ±0.01  
 Millimeters:x.x= ±0.5,x.xx= ±0.25

Typical at 25°C, nominal line and 75% load, unless otherwise Specified

# Mouser Electronics

Authorized Distributor

Click to View Pricing, Inventory, Delivery & Lifecycle Information:

## Cincon:

[CFM21S033](#) [CFM21S033-E](#) [CFM21S033-S](#) [CFM21S033-T](#) [CFM21S050](#) [CFM21S050-E](#) [CFM21S050-S](#)  
[CFM21S050-T](#) [CFM21S090](#) [CFM21S090-E](#) [CFM21S090-S](#) [CFM21S090-T](#) [CFM21S120](#) [CFM21S120-E](#)  
[CFM21S120-S](#) [CFM21S120-T](#) [CFM21S150](#) [CFM21S150-E](#) [CFM21S150-S](#) [CFM21S150-T](#) [CFM21S240](#)  
[CFM21S240-E](#) [CFM21S240-S](#) [CFM21S240-T](#)