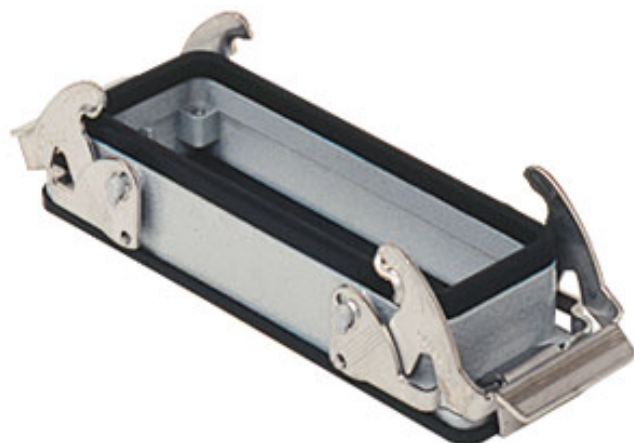


Product Sheet

Part Number: C71 24



Family	C7 - CV and M7 - MV enclosures, V-Type lever version
Version	metal version
Series	bulkhead mounting housings with 2 levers or 4 pegs
Product type	with 2 stainless steel levers
IP degree of protection	IP66/ IP67 (EN 60529) and IP69K (DIN 40050 - 9) degree of protection.
Fixing centre distance	size "104.27"
Material	metal
Barcode EAN13	8015747093644

The information and the dimensions contained are not binding and may be changed without prior notice.
The drawing's dimensions are in mm.

Notes

The enclosures ensure IP protection rating when mated and locked. To be complete with cable glands.

C7I:

Due to the vertical closing movement, the new lever offers an IP66/IP67 protection (according to EN 60529) when fitted with a complete and coupled connector and used with ILME standard hoods in die cast aluminum with pegs (without adaptor).

For bulkhead-mounting housings, the IP66/IP67 protection class is guaranteed if the housings are fitted on sufficiently rigid panels, M4 screws of suitable length (negligible bending of the surface when exposed to the tightening torque of 0.8-1.2Nm of the fixing screws or to the deformations caused by the actual weight of the complete connector). If rigidity is insufficient, is advisable to use CG .. FL flanges, M4 screws of suitable length and M4 flat/elastic washers (for the housing side) and M6 flat/elastic washers (for the flange side) with M4 locking nuts.

It is also important to check that the panel in contact with the gasket of the bulkhead-mounting housing flange is free from imperfections (deep scratches, grooves, burs) that could affect the operation of the gasket.