



M95 GSM Module Presentation

2013/09/10

Contents

General Description

Target Applications
Highlights
Hardware Architecture
Software Advantage
Enhanced AT Commands
Mechanical Dimensions

M95 vs. Competitor's Products

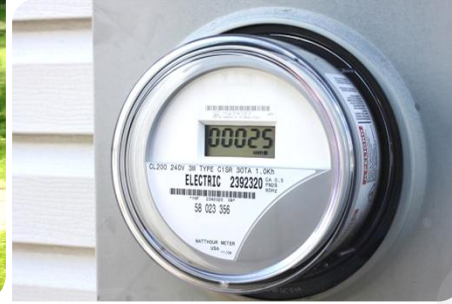
M95 vs. BXS2 & XE865

Support Package

Technical Material Package



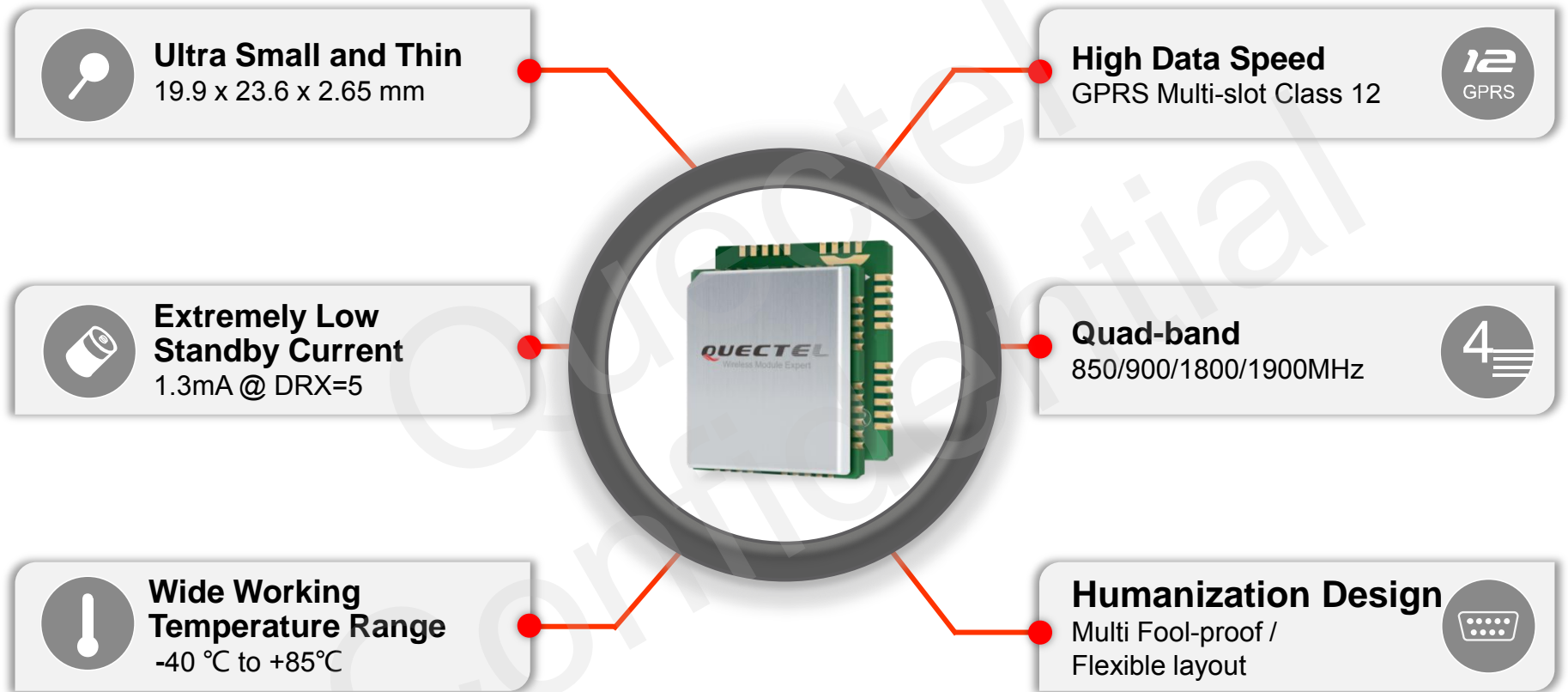
Target Applications



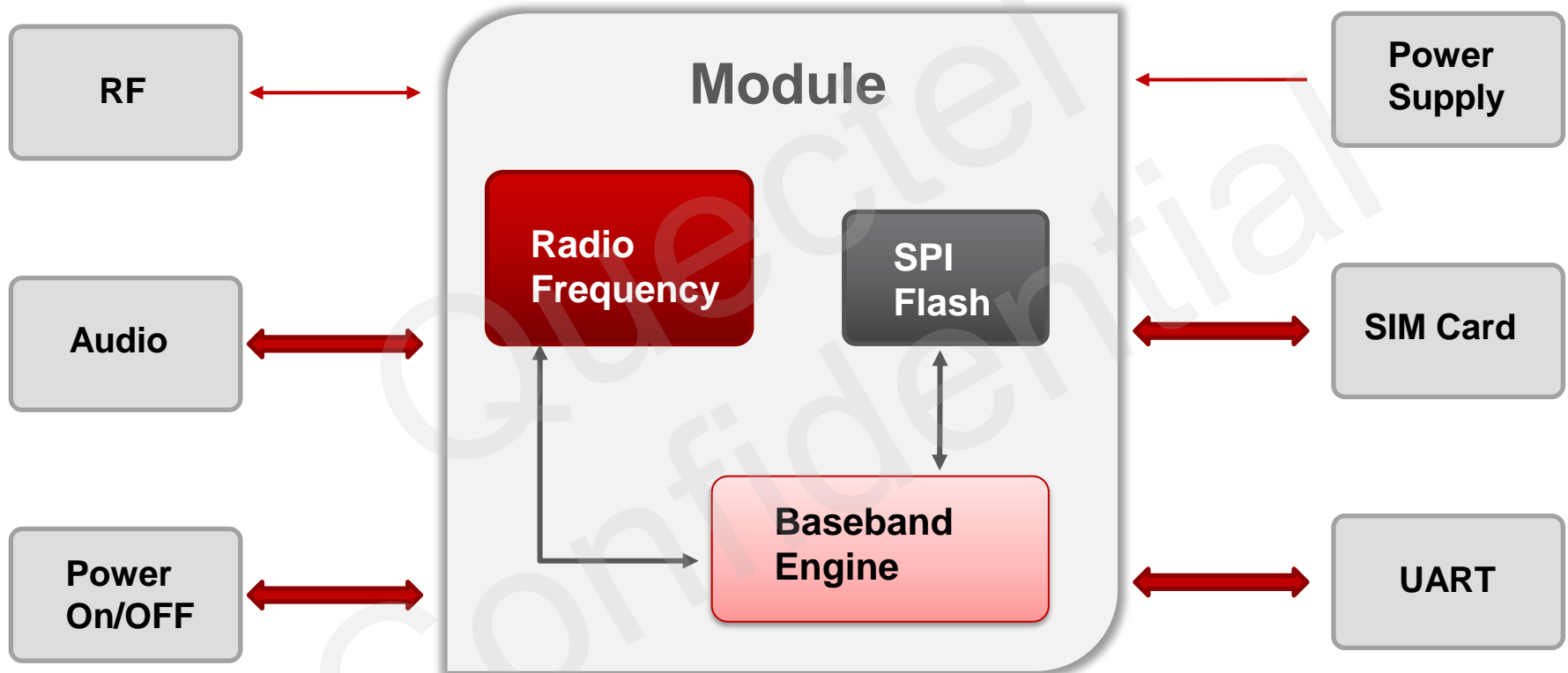
Smart Metering
VTS
Wireless POS
Personal Tracking
Industrial PDA



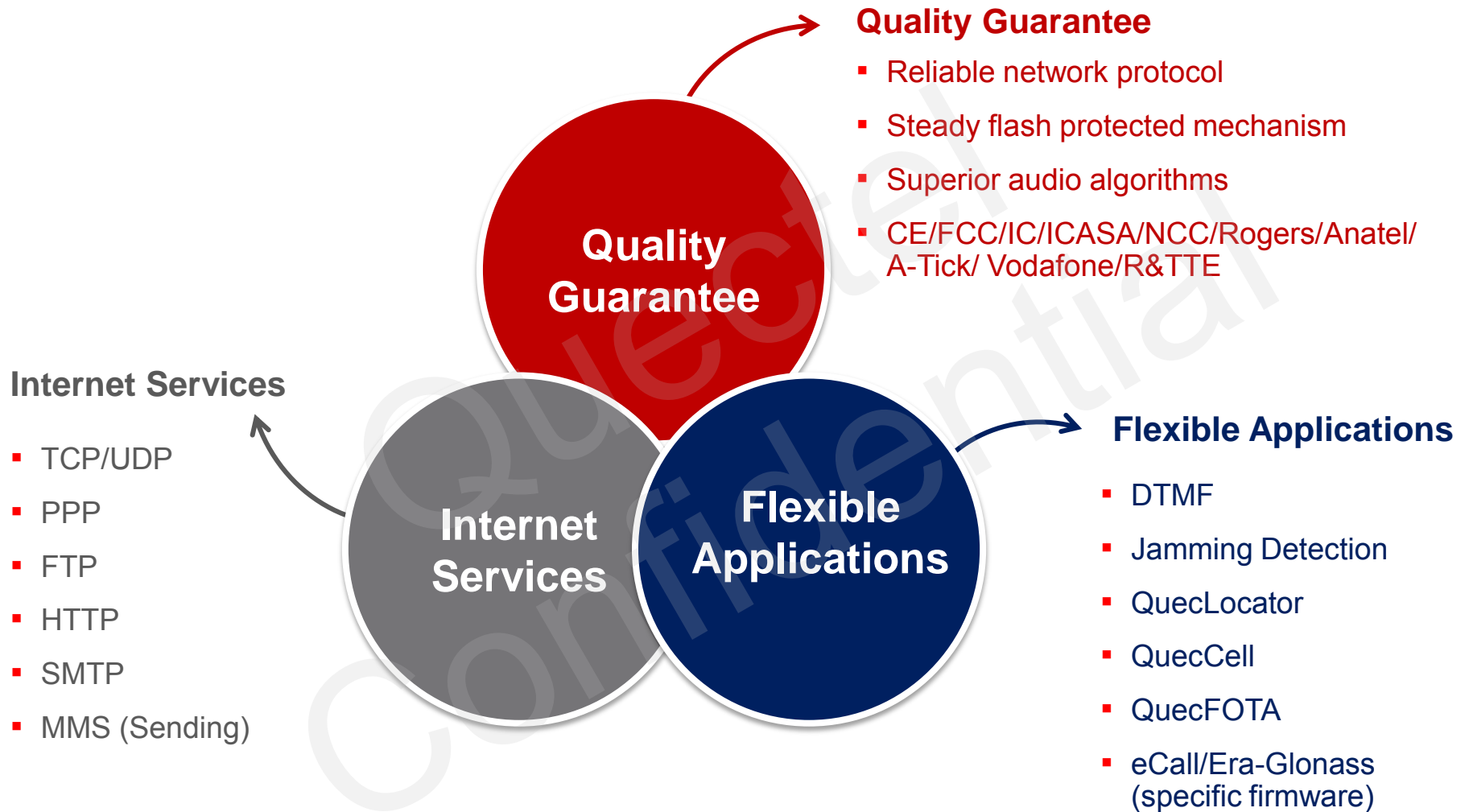
Highlights




Hardware Architecture



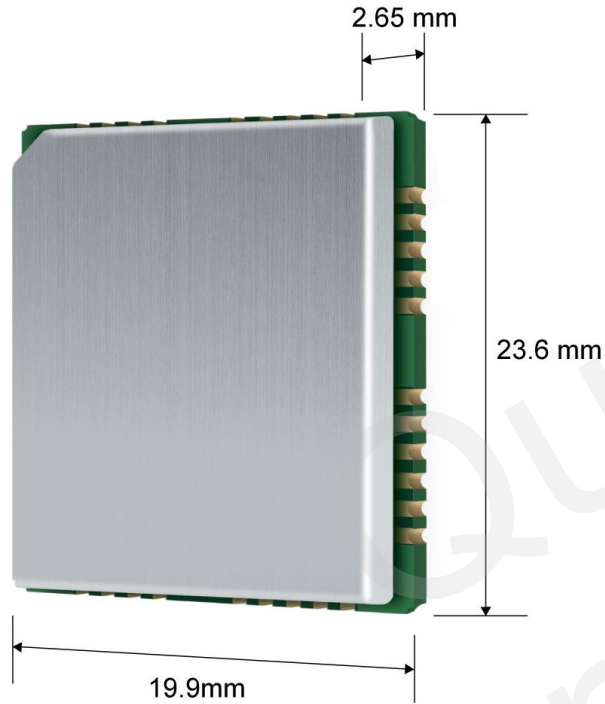
Software Advantages



Enhanced AT Commands

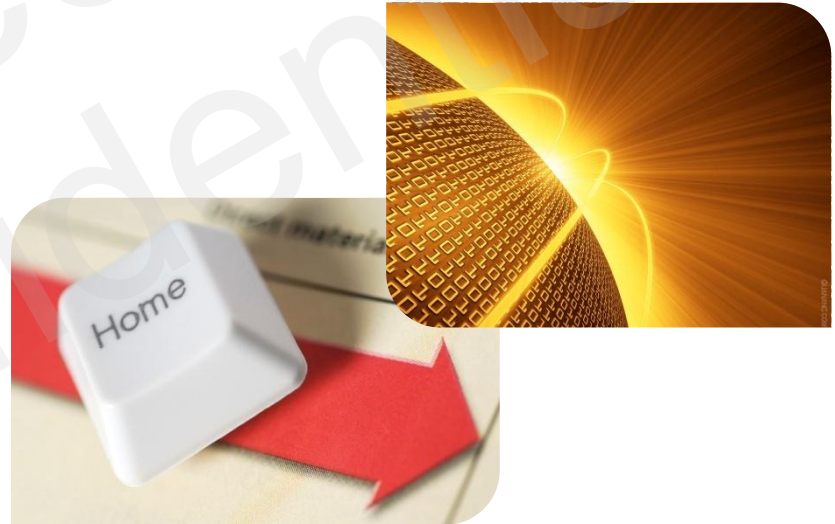
- 
- Standard V.25ter AT commands
 - GSM 07.07
 - GSM 07.05 (SMS)
 - GPRS AT commands in accordance with GSM 07.07
 - TCP/IP stack AT commands
 - STK (SIM Application Toolkit)
 - Quetel defined AT commands (Enhanced Functions)

Mechanical Dimensions



M95 Module

Length: **23.6 mm** ($\pm 0.15\text{mm}$)
Width: **19.9 mm** ($\pm 0.15\text{mm}$)
Height: **2.65 mm** ($\pm 0.20\text{mm}$)
Weight: **3g**



Contents

General Description

Target Applications
Highlights
Hardware Architecture
Software Advantage
Enhanced AT Commands
Mechanical Dimensions

M95 vs. Competitor's Products

M95 vs. BXS2 & XE865

Support Package

Technical Material Package



M95 vs. Competitors

M95 vs. BxS2 & XE865			
Product Features	M95	C-company BXS2	T-company XE865
Size (mm)	19.9×23.6×2.65	18.8×26.7×2.7	22.0×22.0×3.0
Package	LCC, easier soldering and production	LGA package	BGA package, difficult to solder
Current Consumption	Sleep Mode 1.3mA @ DRX=5 1.2mA @ DRX=9	1.5mA @ DRX=5 1.2mA @ DRX=9	1.5mA @ DRX=9
GPRS	Class 1~12 configurable: max. 85.6 kbps (uplink & downlink)	Class 10: max. 42.8 kbps(uplink), 85.6kbps(downlink)	Class 10: max. 42.8 kbps(uplink & downlink)
Sensitivity	-108.5dBm	-107dBm	GSM850 & GSM900: -107dBm DCS1800 & PCS1900: -106dBm
Switch-off Normal Method	By “PWRKEY” or AT command	Only AT command	Only AT command
Audio Interface	2 channels	1 channel	1 channel

Contents

General Description

Target Applications
Highlights
Hardware Architecture
Software Advantage
Enhanced AT Commands
Mechanical Dimensions

M95 vs. Competitor's Products

M95 vs. BXS2 & XE865

Support Package

Technical Material Package



Technical materials Package

Technical Materials Package

- Hardware, software, specification
- Application notes package
- Debug tool, download tool, test tool,
- EVB package
- Approvals & test report package

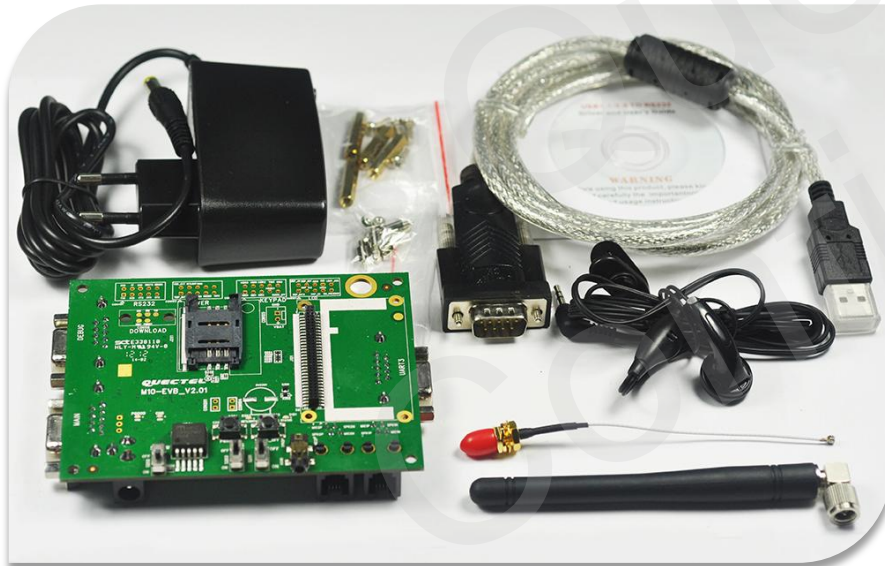
Development Tool

Interfaces

- 2 RS-232 interfaces
- Power supply
- Antenna interface
- Debug UART interface
- Handset interface
- Earphone interface

Features

- Network status LED
- Power key
- Emergency off key



Q&A...

Thank you

