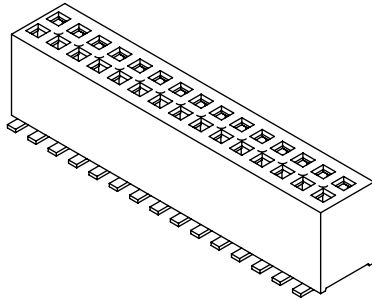


DO NOT SCALE FROM THIS PRINT



FLE-1XX-XX-XX-DV-X

No OF POSITIONS

-02 THRU -75 (PER ROW)

LEAD STYLE

-01: SURFACE MOUNT (USE C-96-01-XX)

PLATING SPECIFICATION

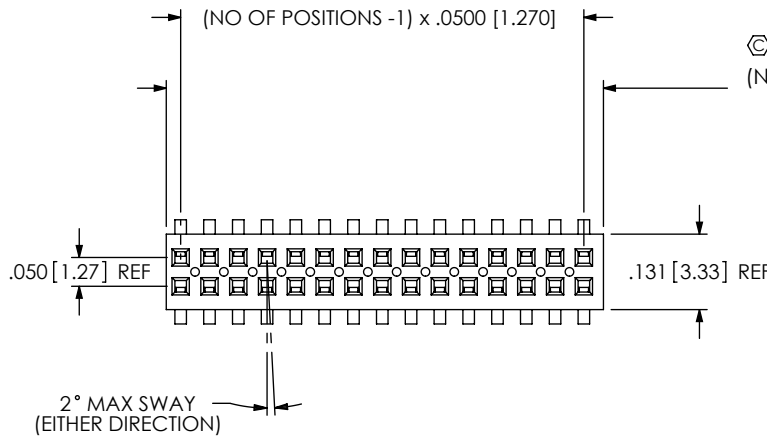
- G: 10μ" GOLD IN CONTACT AREA, 3μ" GOLD ON TAIL
- H: 30μ" HEAVY GOLD IN CONTACT AREA, 3μ" GOLD ON TAIL
- GF: 3μ" ON ENTIRE CONTACT

OPTION

- A: ALIGNMENT PIN (SEE FIG 2 & 3, SHT 2) (USE FLE-XX-D-XX) (MOLDED TO POSITION OR STAKED) (SAMTEC DISCRETION WHICH -A PINIS USED) (MOLDED 3 POSITION MINIMUM) (STAKED 7 POSITION MINIMUM)
- P: PICK AND PLACE PAD (SEE FIG 4, SHT 2) (USE LMP-09, -05 POSITIONS MIMIMUM)
- K: POLYIMIDE FILM PAD (SEE FIG 6, SHT 2) (-05 POSITIONS MIMIMUM)
- TR: TAPE & REEL

BODY SPECIFICATION

-DV: DOUBLE VERTICAL (USE FLE-75-D-XX)



(NO OF POSITIONS x .0500 [1.270] + .0045 [0.114] <sup>+0.0065</sup> <sup>[+0.165]</sup> <sub>-.0050</sub> <sub>[-.127]</sub>) (SEE NOTE 8)

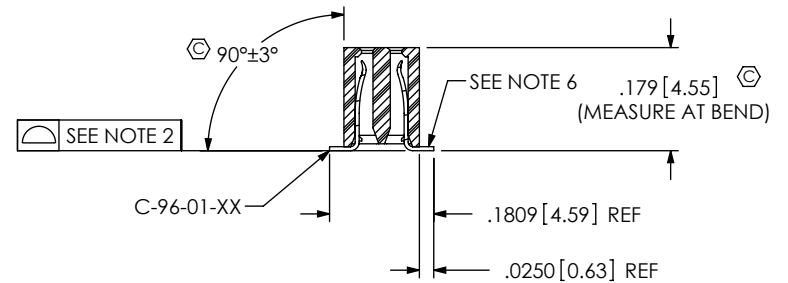
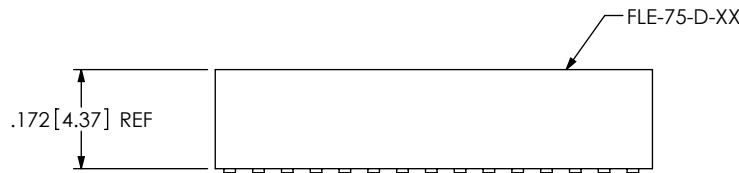


FIG 1  
FLE-1XX-01-X-DV SHOWN

NOTES:

1. Ⓢ REPRESENTS A CRITICAL DIMENSION.
2. COPLANARITY: POSITIONS -2 THRU -26: .004 [.10]  
POSITIONS -27 THRU -75: .006 [.15]
3. MINIMUM PUSHOUT FORCE: .5 LB.
4. PACKAGE POSITIONS -05 THRU -75 IN TUBES; LAYER PACKAGE POSITIONS -02 THRU -04.
5. FOR EVERY FINISHED PART, ONE POSITION WILL BE LOST WHEN CUTTING BODY TO LENGTH.
6. MAXIMUM BURR ALLOWANCE: .003 [.08].
7. MAXIMUM CUT FLASH: .010 [.25] MAX WITH NO FLASH ALLOWED IN HOLES OR EXTENDING BELOW LEADS.
8. THIS DIMENSION FOR 75 POSITIONS IS 3.759[95.47] REF.

UNLESS OTHERWISE SPECIFIED, DIMENSIONS ARE IN INCHES.

TOLERANCES ARE:

DECIMALS	ANGLES
.XX: ±.01 [.3]	2°
.XXX: ±.005 [.13]	
.XXXX: ±.0020 [.051]	

PROPRIETARY NOTE

THIS DOCUMENT CONTAINS INFORMATION CONFIDENTIAL AND PROPRIETARY TO SAMTEC, INC. AND SHALL NOT BE REPRODUCED OR TRANSFERRED TO OTHER DOCUMENTS OR DISCLOSED TO OTHERS OR USED FOR ANY PURPOSE OTHER THAN THAT WHICH IT WAS OBTAINED WITHOUT THE EXPRESSED WRITTEN CONSENT OF SAMTEC, INC.



520 PARK EAST BLVD., NEW ALBANY, IN 47150  
PHONE: 812-944-6733 FAX: 812-948-5047  
e-Mail: info@SAMTEC.com code 55322

MATERIAL: DO NOT SCALE DRAWING SHEET SCALE: 3:1

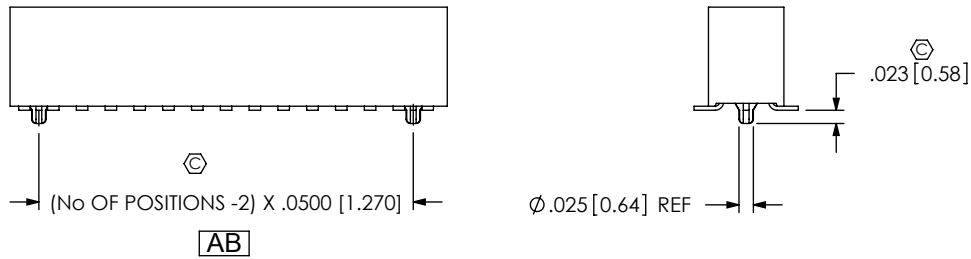
INSULATOR: VECTRA E130i, COLOR: BLACK  
CONTACT: PHOS BRONZE

DESCRIPTION:  
DUAL ROW .050 [1.27 X .050 [1.27] STRIP ASSEMBLY

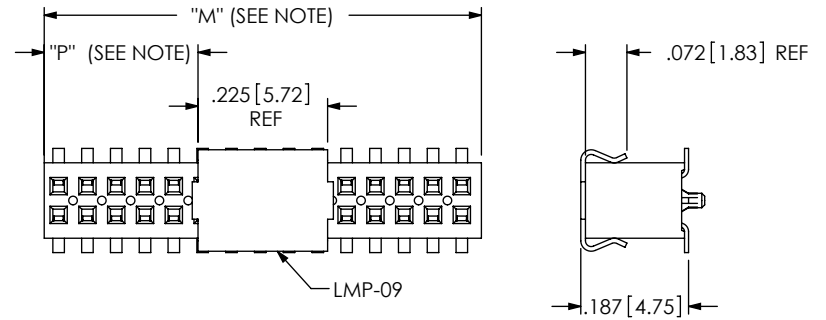
DWG. NO. FLE-1XX-XX-XX-DV-X

BY: D PURVIS 11/05/96 SHEET 1 OF 2

**FIG 2**  
-A: OPTION  
MOLDED ALIGNMENT PIN (3 POSITION MINIMUM)  
(DIFFERENT AS SHOWN, OTHERWISE SAME AS FIG 1)

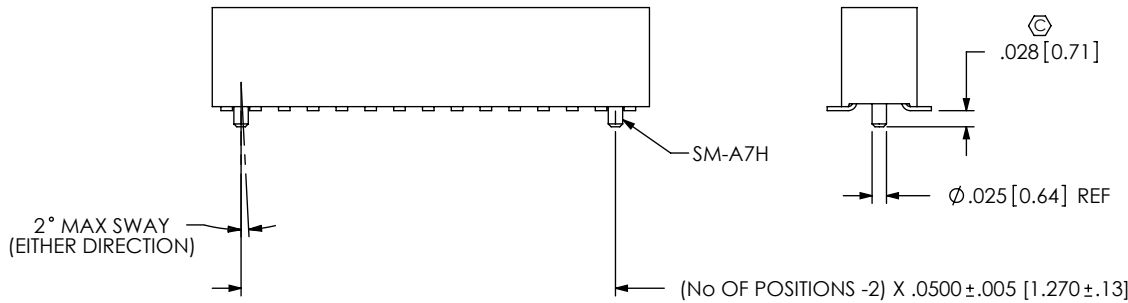


**FIG 4**  
-P: OPTION  
(USE LMP-09)  
(DIFFERENT AS SHOWN, OTHERWISE SAME AS FIG 1)

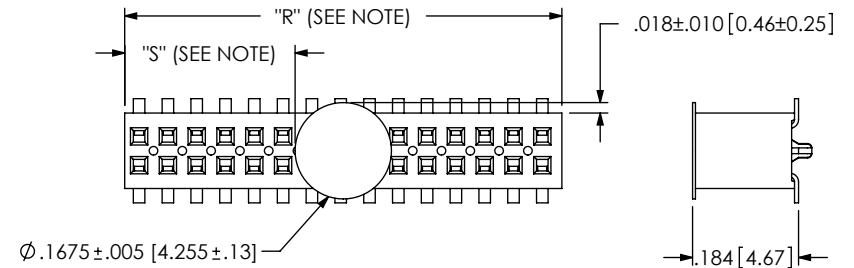


NOTE: "M" = USED MEASURED DIMENSION (REF)  
"P" = (( "M" - .225 [5.71] ) / 2) ± .020 [ .51]

**FIG 3**  
-A: OPTION  
STAKED ALIGNMENT PIN (7 POSITION MINIMUM)  
(DIFFERENT AS SHOWN, OTHERWISE SAME AS FIG 1)



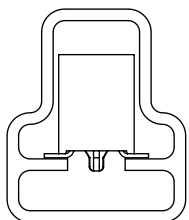
**FIG 6**  
-K: OPTION (POLYIMIDE FILM PAD)  
(DIFFERENT AS SHOWN, OTHERWISE SAME AS FIG 1)



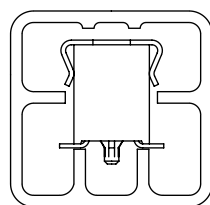
NOTE: "R" = USED MEASURED DIMENSION (REF)  
"S" = (( "R" - .1675 [4.255] ) / 2) ± .020 [ .51]

F:\DWG\MISC\MKTG\FLE-1XX-XX-XX-DV-X-MKT.SLDRW

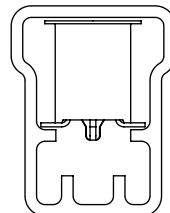
**PACKAGING VIEW**



PT-1-24-01-43



PT-1-24-05-63



PT-1-24-13-09

PACKAGING TABLE		
OPTION	TUBE	PLUG
WITHOUT -P	PT-1-24-01-43	TP-24
-P, -P-A	PT-1-24-05-63	TP-24
-K, -K-A	PT-1-24-13-09	TP-24

**PROPRIETARY NOTE**

THIS DOCUMENT CONTAINS INFORMATION CONFIDENTIAL AND PROPRIETARY TO SAMTEC, INC. AND SHALL NOT BE REPRODUCED OR TRANSFERRED TO OTHER DOCUMENTS OR DISCLOSED TO OTHERS OR USED FOR ANY PURPOSE OTHER THAN THAT WHICH IT WAS OBTAINED WITHOUT THE EXPRESSED WRITTEN CONSENT OF SAMTEC, INC.

DO NOT SCALE DRAWING

SHEET SCALE: 3:1



520 PARK EAST BLVD, NEW ALBANY, IN 47150  
PHONE: 812-944-6733 FAX: 812-948-5047  
e-Mail: info@SAMTEC.com code 55322

DESCRIPTION:  
DUAL ROW .050 [1.27 X .050 [1.27] STRIP ASSEMBLY  
DWG. NO.

**FLE-1XX-XX-XX-DV-X**

BY: D PURVIS 11/05/96 SHEET 2 OF 2