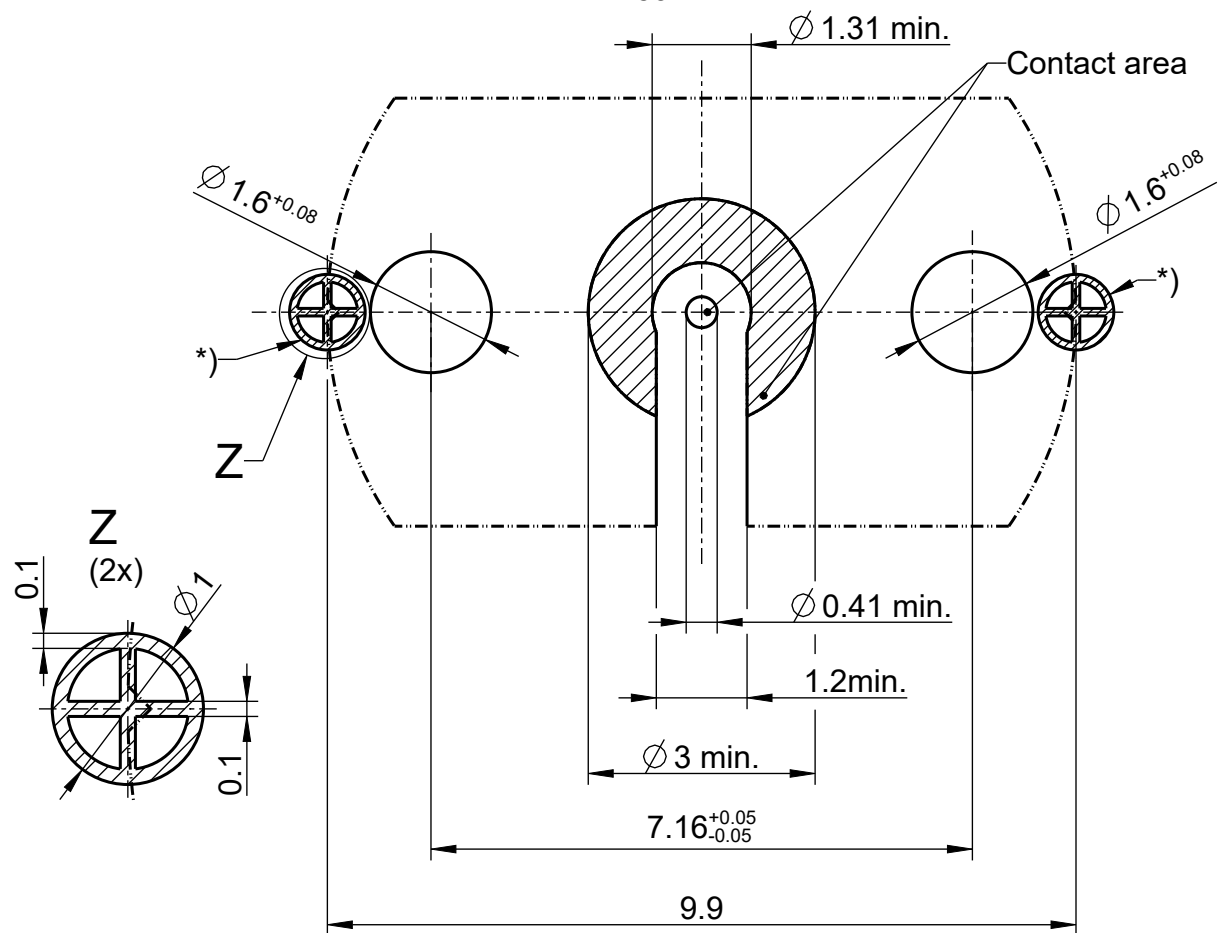


**VORSERIE  
 PRE-SERIES**

Leiterplatten-Layout  
 PCB layout  
 B 594E



\*) Fiducial (made out of copper) for alignment with notch on the outer contact.  
 Please see handling instruction HI\_039 for detailed description

A wide variety of transmissionline topologies and pcb-parameters like permittivity, substrate thickness, and board-stackup are applied by customers. These parameters have a strong impact on the high frequency performance of the mounted connector. Please note, that the given layout is not optimised to fit all of the possible board configurations regarding RF-performance, it represents a recommendation for optimum solderability of the connector. In order to guarantee optimum high frequency properties of the connector, an RF-analysis of the connector to board transition is recommended.

Die angegebenen Masse und Toleranzen sind nur Empfehlungen.  
 The stated dimensions are only recommendations.

<b>Rosenberger</b>		general tolerance		assembly instr.: ---		scale: 10:1 (1:1)		crimp insert: ---	
		ISO 2768 mH		panel piercing: --		series: ---		cable: ---	
<b>vertraulich / confidential</b>				date		name		title: <b>Leiterplatten-Layout                  PCB layout</b>	
				drawn	23.10.2018	M_Ruf			
				check	15.05.2023	M_Rahberger			
				appr.	23.05.2023	M_Moder			
drawing-no.: MB_594E				sheet: 1		of: 1			
remarks: .									