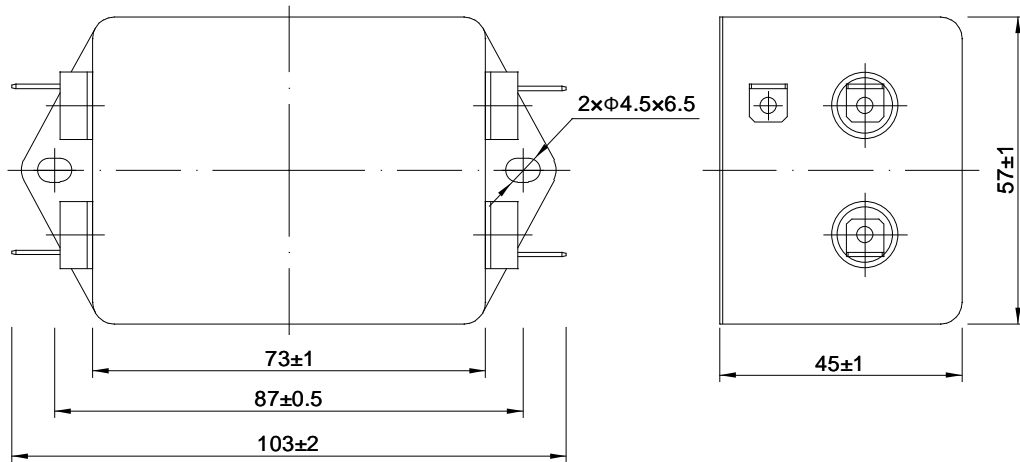


# DL-8T1 Specification Direction

## 1. Outline Drawing and Dimensions: (mm)



## 2. Specification:

Rated Voltage: 250VAC

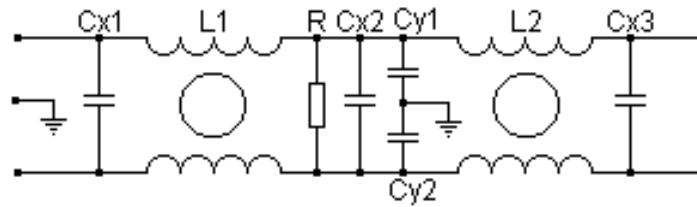
Rated Current: 8A

Test Voltage: (1min)

line to line: 1500VDC

line to ground: 1500VAC

## 3. Circuit Diagram:



## 4. Insertion Loss in dB (Measured in 50Ω system as IEC/CISPR NO.17):

