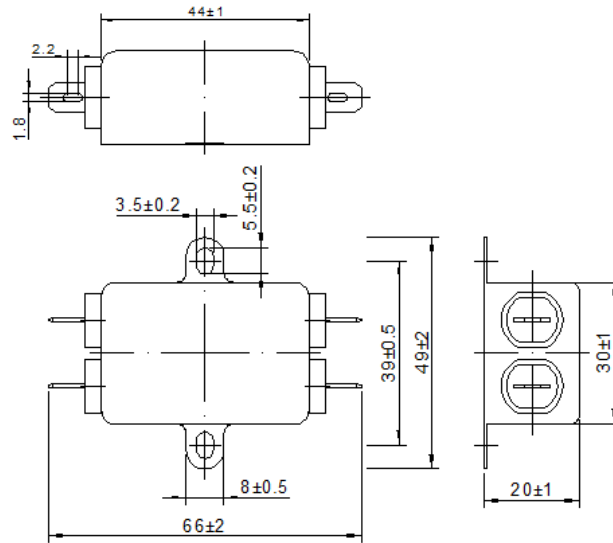


# DL-1D31 Specification Direction

## 1.Outline Drawing and Dimensions: (mm)



## 2.Specification:

Rated Voltage: 120/250VAC

Operating frequency: 50/60Hz

Rated Current: 1A

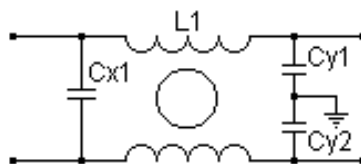
Climatic Category: HPF(25/085/21)

Test Voltage(60secs):

line to ground: 1500VAC

line to line: 1500VDC

## 3.Circuit Diagram:



## 4.Insertion Loss in dB: (Measured in $50 \Omega$ system ,as IEC/CISPR NO.17)

