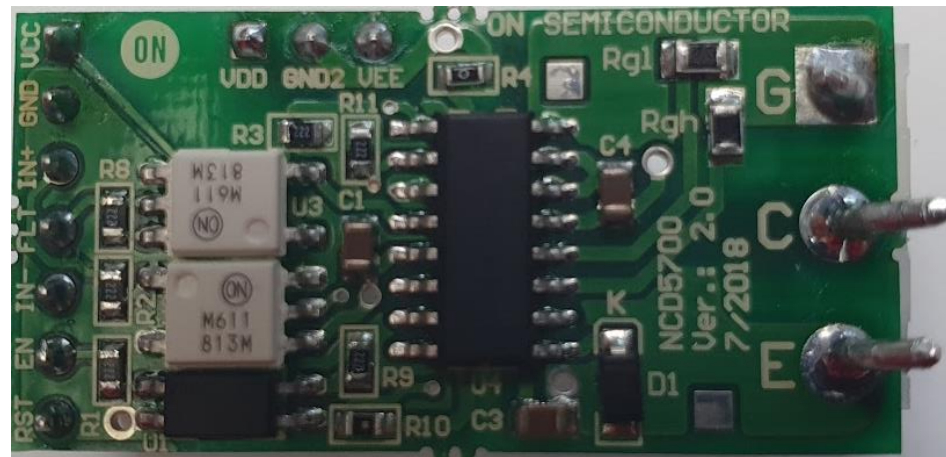


# Test Procedure SECO-NCD5700-GEVB

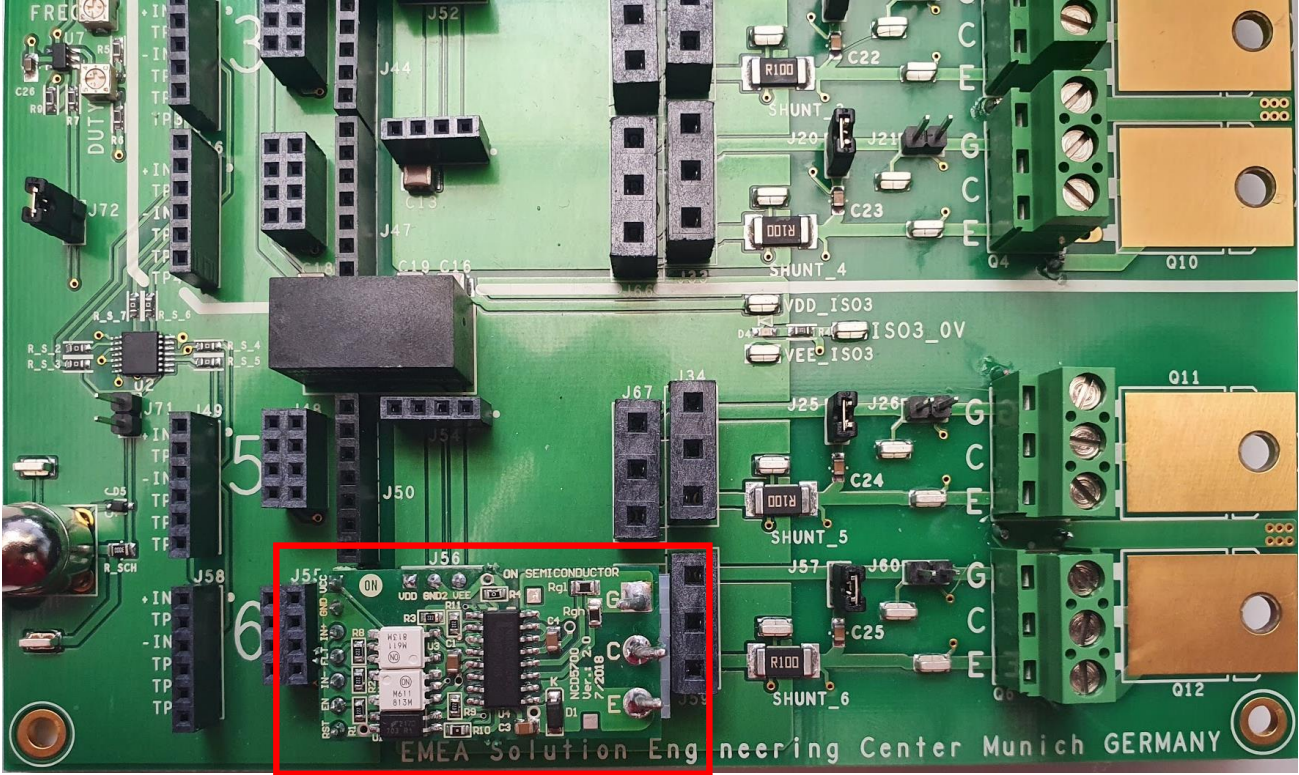
## **Test procedure requires**

- One 4 channel oscilloscope
- 10V to 15V wall adapter for test board power supply (OD 6.5 mm)
- One test board provided by ON Semiconductor.

Device under test (DUT)

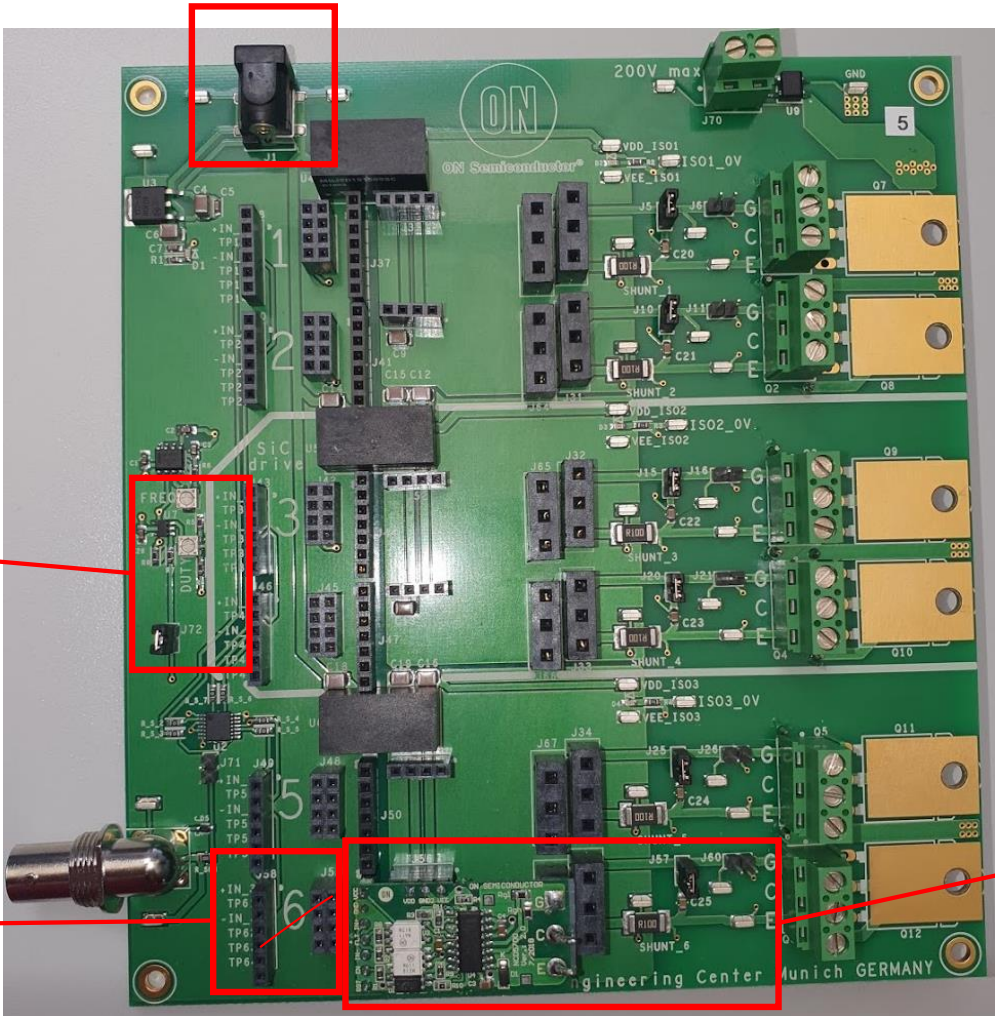


Connect DUT to channel number 6



# Prepare measurement according steps below

1) Plug 10V to 15V DC



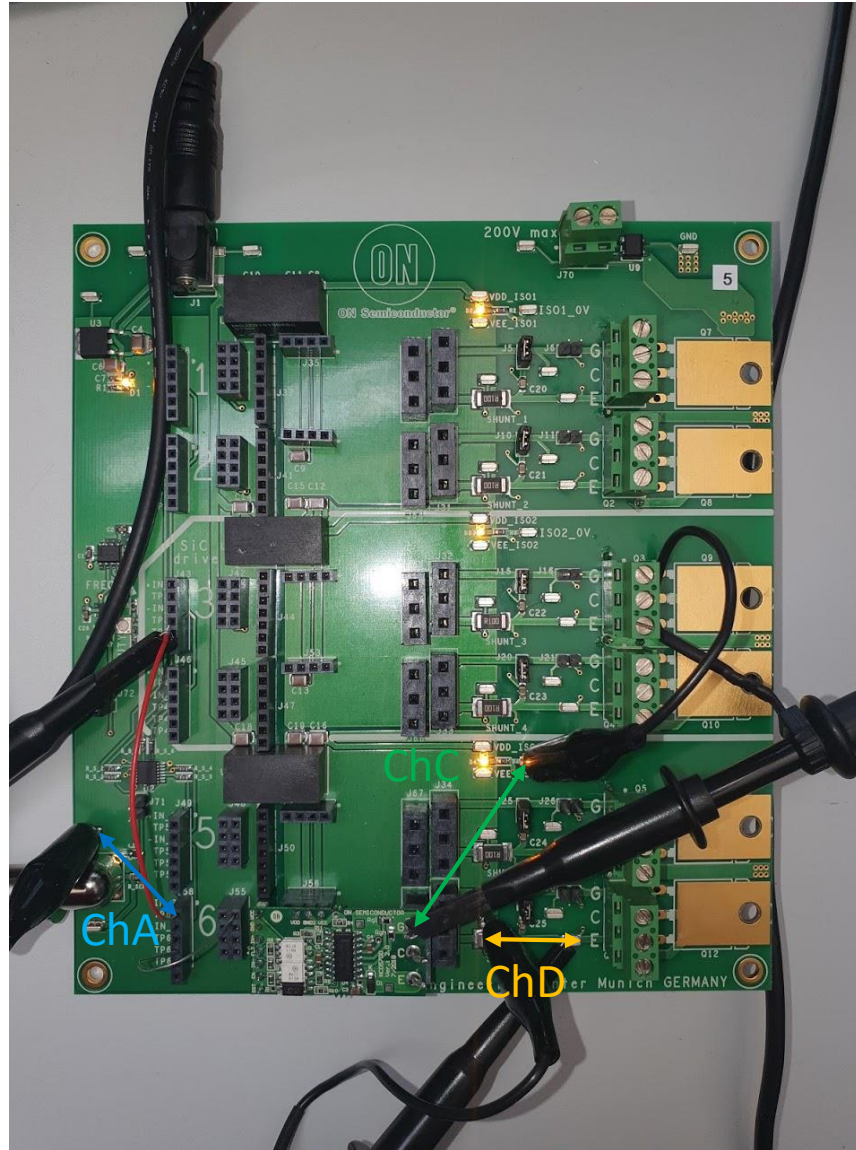
2/Adjust frequency around 16 kHz  
(measure on opened J72)  
3/Adjust duty cycle to 50%  
4/ Place jumper on position J72

5/Connect J58.4 to J55.2  
6/ Place jumper on position J72

7/Open J60 and close J57



## Measurement by scope

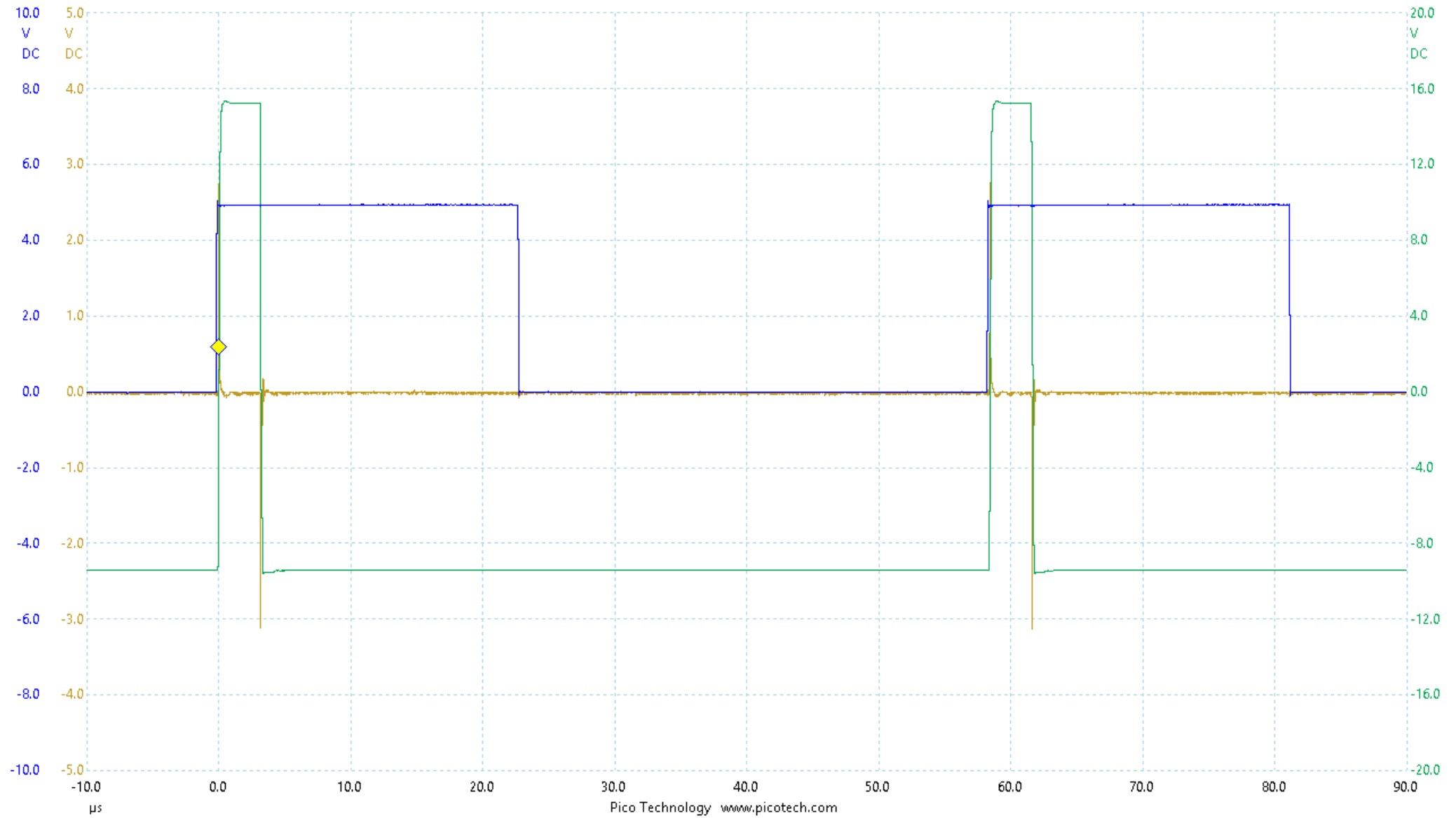


ChA: Measure voltage across J58.1 and GND on test point close to BNC connector

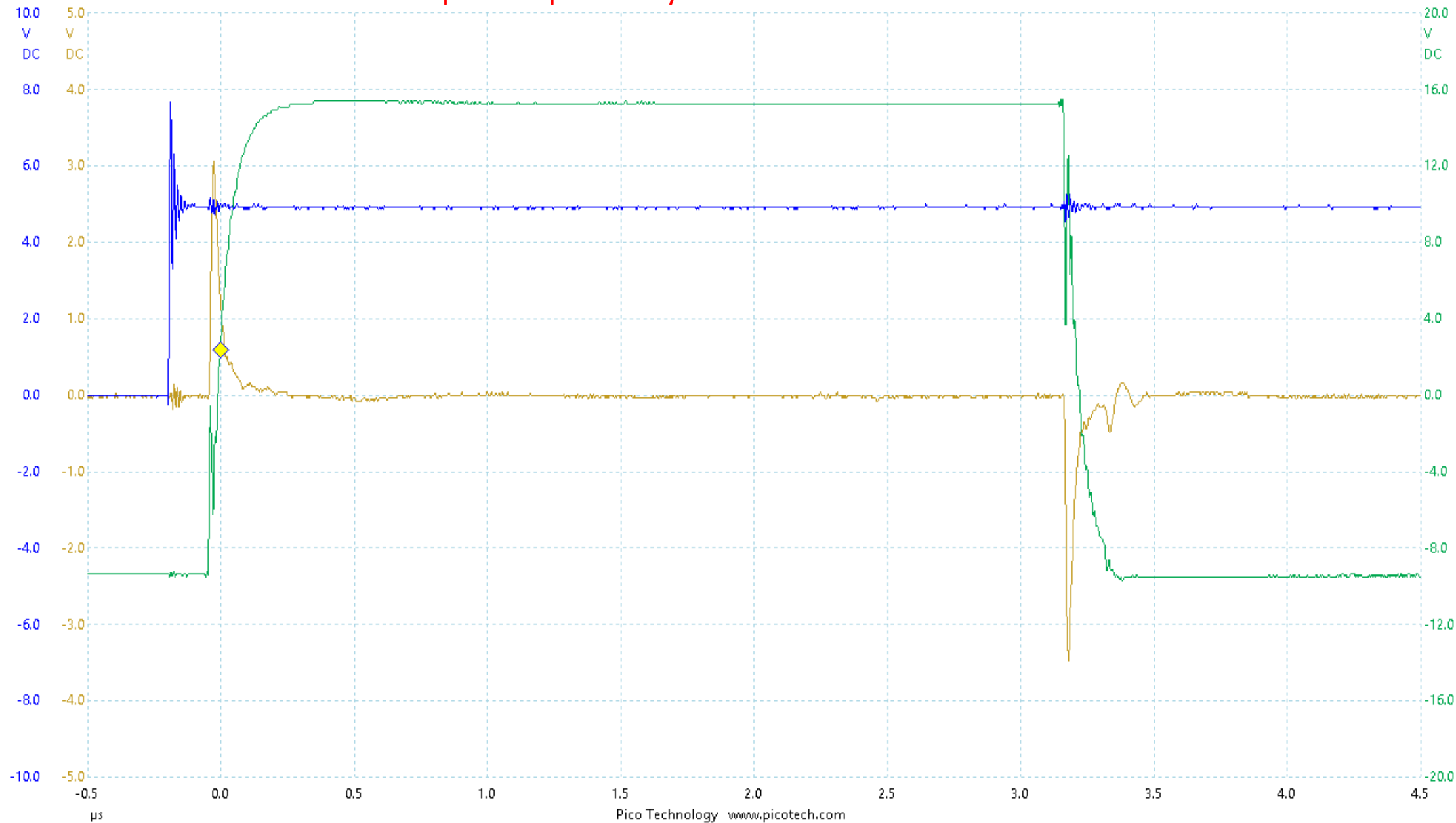
ChC: Measure voltage across G pin on the DUT and ISO GND on test point ISO3\_0V

ChD: Measure voltage across shunt resistor SHUNT\_6

# Same periodic signals has to be visible



# Detail for positive pulse only



# Mouser Electronics

Authorized Distributor

Click to View Pricing, Inventory, Delivery & Lifecycle Information:

[onsemi:](#)

[SECO-NCD5700-GEVB](#)