

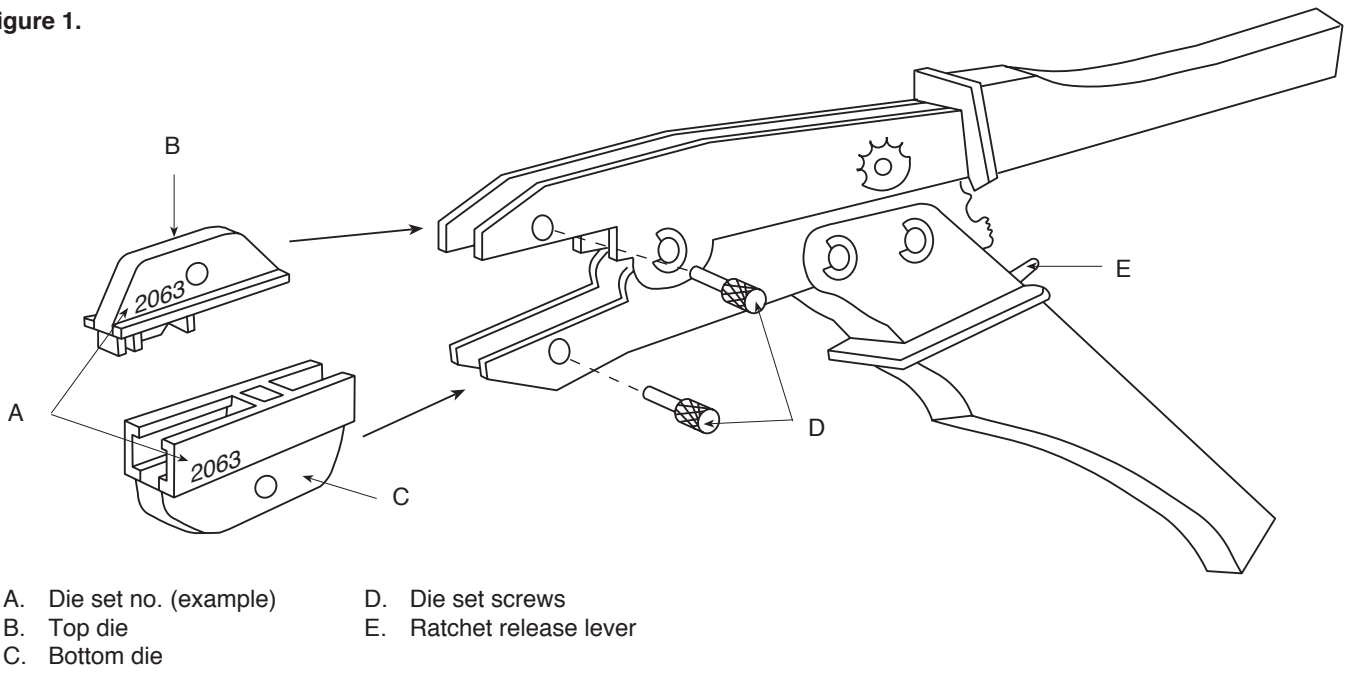


Data Plug Crimp Tool Kit

Stock No.
443-895
443-902
443-918

Product
Tool Frame
Tool Frame and Case
Tool Kit

Figure 1.



- A. Die set no. (example)
- B. Top die
- C. Bottom die
- D. Die set screws
- E. Ratchet release lever

Die set selection

Each die set is clearly marked with a number which identifies it for terminating specific data plugs. The table below gives the cross reference between die sets and plugs.

Table 1

| Die set no. | RS stock no. | Terminates plugs | Plug stock no. |
|-------------|--------------|-------------------------|---------------------------|
| 2061 | 443-974 | Stewart 8/8-way | 477-321, 437-216 |
| 2062 | 443-946 | Stewart 6/4 and 6/6-way | 442-707, 477-315, 437-193 |
| 2063 | 443-924 | 4/4-way | 436-910, 477-309 |
| 2064 | 443-968 | Amp 8/8-way | 455-258, 436-954 |
| 2065 | 443-930 | Amp 6/4 and 6/6-way | 436-926, 436-932 |
| 2067 | 443-952 | Amp 6/6 MMJ | 436-948 |
| 2068 | 443-980 | 10/10-way | 436-960, 437-222 |

Plug termination

Selecting the appropriate die set as in table 1, insert the die set into the tool frame, aligning the die set holes with the holes in the tool jaws (figure 1). Secure the die set with the set screws as shown.

Squeeze the tool handles to ensure correct opening and closing of the die set.

With cable prepared and assembled to the appropriate plug, insert the plug into the bottom die (figure 2). Squeeze the tool handles to terminate the plug. Allow the ratchet mechanism to fully cycle and remove the plug when the tool jaws open.

Figure 2. Plug termination

