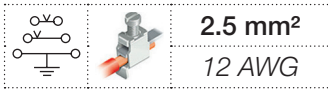


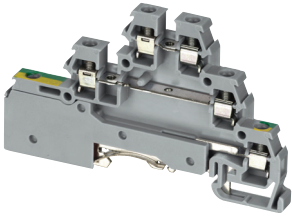
D2.5/6.DP screw clamp terminal blocks

Double deck + ground - 6 mm 0.236 in spacing

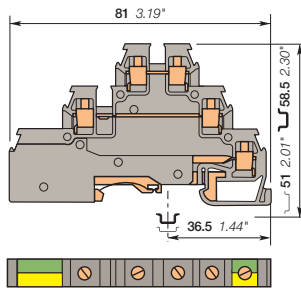


2.5 mm²

12 AWG



D2.5/6.DP



6 mm 0.236 in spacing

Description

- Save space with triple deck terminal blocks: 2 independent circuits in just 6 mm 0.236 in spacing,
- Adapted for 2 wires sensor/actuator with ground.

Ordering details

Description	Color	Type	Order code	Pkg pce	Weight (1 pce) g
Feed-through + ground For 2 wires sensor with ground - 2 feed-through circuits - 1 ground circuit	Grey, Green-Yellow	D2.5/6.DPA1	1SNA115643R2700	25	16.00

Main technical data

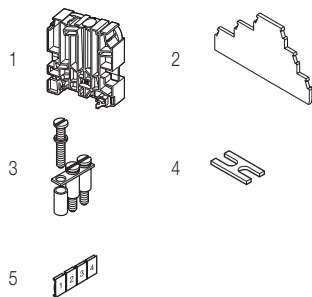
	IEC	UL	CSA
1 conductor per clamp	Rigid - Solid / Stranded Flexible with insulated ferrule Gauge	0.2-2.5 mm ² 0.22-2.5 mm ² A2	20-12 AWG 22-14 AWG
Rated current / Rated cross section	22 A / 2.5 mm ²	26 A / 12 AWG	20 A / 14 AWG
Rated short-time withstand current (1s)	300 A		
Rated voltage	380 V	300 V	300 V
Impulse withstand voltage			
Protection	IP20	NEMA 1	

Mounting instructions

Rail		G32, TH 35-7.5, TH 35-15
Wire stripping length		6 mm 0.24 in
Tool		Flat screwdriver Ø 3.5 mm Ø 0.138 in
Torque		0.4 - 0.6 N.m 3.5 - 5.3 lb.in

The connecting capacity data for one Rigid - Solid / Stranded - Flexible conductor (when applicable) is a mandatory information required by IEC, UL and CSA standards. All other data are provided as supplementary information only. For more details, please consult our CB, UL or CSA certificates and technical data sheet available on <http://www.ABB.com>

CE	RoHS	USR	CSA	Gost R															
----	------	-----	-----	--------	--	--	--	--	--	--	--	--	--	--	--	--	--	--	--



Accessories

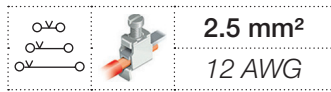
Description	Color	Type	Order code	Pkg pce	Weight (1 pce) g
1 End stops 12 mm 0.472 in	Grey	BADH	1SNA116900R2700	50	24.00
2 End sections 3 mm 0.118 in	Grey	FED3E	1SNA116771R2000	20	3.80
3 Jumper bars 2 poles 22 A		BJD6	1SNA178024R2500	10	1.00
3 poles			1SNA178025R2600	10	2.00
4 poles			1SNA178026R2700	10	2.00
5 poles			1SNA178027R2000	10	3.00
10 poles			1SNA178032R2500	10	6.00
20 poles			1SNA178033R2600	5	12.00
4 Cross spacing jumpers 5 mm 0.200 in - 6 mm 0.236 in - 8 mm 0.315 in		EL61	1SNA177812R1700	10	0.10
5 Terminal block markers Blank card	White	RC65	1SNA232000R0000	1	3.60

Complete list of accessories is indicated in the terminal block datasheet. Some accessories such as jumper bars may modify the terminal block's ratings: complete information in the accessories catalogue pages.

All the technical data for UL/CSA standard and dimensions in inches are in *italics*.
Technical data valid for copper conductors only.

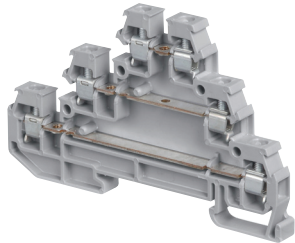
D2.5/6.DA screw clamp terminal blocks

Triple deck - 6 mm 0.236 in spacing

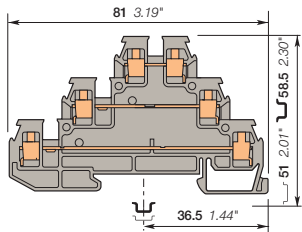


2.5 mm²
12 AWG

2



D2.5/6.DA



6 mm 0.236 in spacing

Description

- Save space with triple deck terminal blocks: 3 independent circuits connected in just 6 mm 0.236 in spacing,
- Adapted for 3 wires sensor/actuator.

Ordering details

Description	Color	Type	Order code	Pkg pce	Weight (1 pce) g
Feed-through For 3 wires sensor - 3 feed-through circuits	Grey <input type="checkbox"/>	D2.5/6.DA	1SNA115541R1100	25	13.00

Main technical data

	IEC	UL	CSA	
1 conductor per clamp	Rigid - Solid / Stranded Flexible with insulated ferrule Gauge	0.2-2.5 mm ² 0.22-2.5 mm ² A2	20-12 AWG	22-14 AWG
Rated current / Rated cross section	22 A / 2.5 mm ²	26 A / 12 AWG	20 A / 14 AWG	
Rated short-time withstand current (1s)	300 A			
Rated voltage	380 V	300 V	300 V	
Impulse withstand voltage				
Protection	IP20	NEMA 1		

Mounting instructions

Rail		G32, TH 35-7.5, TH 35-15
Wire stripping length		6 mm 0.24 in
Tool		Flat screwdriver Ø 3.5 mm Ø 0.138 in
Torque		0.4 - 0.6 N.m 3.5 - 5.3 lb.in

The connecting capacity data for one Rigid - Solid / Stranded - Flexible conductor (when applicable) is a mandatory information required by IEC, UL and CSA standards. All other data are provided as supplementary information only, for more details, please consult our CB, UL or CSA certificates and technical data sheet available on <http://www.ABB.com>

CE	RoHS RoHS	UL USR	CSA	Gost R

Accessories

Description	Color	Type	Order code	Pkg pce	Weight (1 pce) g
1 End stops 12 mm <i>0.472 in</i>	Grey <input type="checkbox"/>	BADH	1SNA116900R2700	50	24.00
2 End sections 3 mm <i>0.118 in</i>	Grey <input type="checkbox"/>	FED3E	1SNA116771R2000	20	3.80
3 Jumper bars 2 poles 22 A		BJD6	1SNA178024R2500	10	1.00
3 poles			1SNA178025R2600	10	2.00
4 poles			1SNA178026R2700	10	2.00
5 poles			1SNA178027R2000	10	3.00
10 poles			1SNA178032R2500	10	6.00
20 poles			1SNA178033R2600	5	12.00
4 Cross spacing jumpers 5 mm 0.200 in - 6 mm 0.236 in - 8 mm 0.315 in		EL61	1SNA177812R1700	10	0.10
5 Terminal block markers Blank card	White <input type="checkbox"/>	RC65	1SNA232000R0000	1	3.60

Complete list of accessories is indicated in the terminal block datasheet. Some accessories such as jumper bars may modify the terminal block's ratings: complete information in the accessories catalogue pages.

All the technical data for UL/CSA standard and dimensions in inches are in *italics*.
Technical data valid for copper conductors only.