

Picture



Feature

- 8-Port 10/100/1000Tx Gigabit Ethernet
- Redundant Power Input Design 12 - 48VDC
- Built-in Relay Output Warning for Power Failure
- IP30 Rugged Metal Case Design
- Incl. Din-Rail Kit and Metal plate
- Auto-MDI-MDIX don't need crossover cable
- No configuration and installation need
- Plug and Play
- Operating Temperature Range: -10°C to +65°C
- Optional available EX-6225-T for operating temperature from -40°C to +75°C

8-Port Industrial Gigabit Ethernet Unmanaged Switch

8*10/100/1000Tx, 12-48VDC Power Input

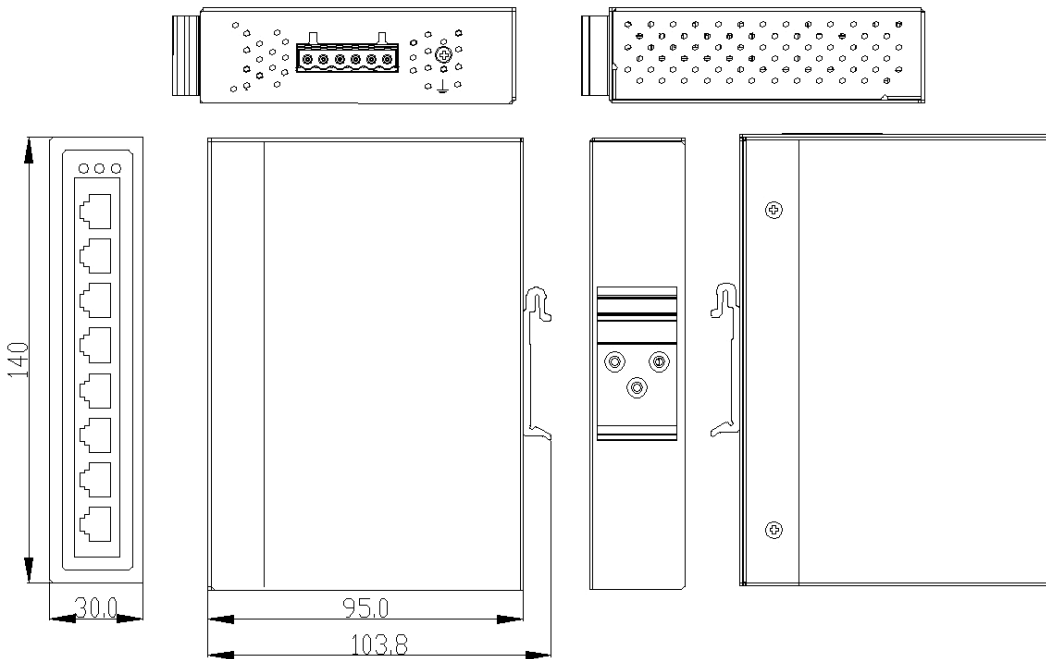
Specification

Technology	
Standards	IEEE 802.3 10BaseTX Ethernet IEEE 802.3u 100BaseTX Fast Ethernet IEEE 802.3ab 1000BaseT
Processing Type	Store and Forward
Protocol	CSMA/CD
Flow Control	IEEE 802.3x flow control, back pressure flow control
Switch Properties	
Switch Architecture	Back-Plane: Non-Blocking Switching Fabric
Transfer Rate	14,880 for Ethernet Port 148,800pps for Fast Ethernet Port 1,488,000pps for Gigabit Ethernet Port
Memory Buffer	4Mbits
Jumbo Frame	9.6Kbytes
MAC Table size	8K
Interface	
RJ45 Ports	8*10/100/1000BaseT(X), auto negotiation speed, Full/Half duplex mode and auto MDI/MDI-X connection
LED Indicators	Power 1, Power 2, Fault Ethernet Ports: On-Lin/Flash-data transmitting
Network Cable	10BaseT: 2-pair UTP/STP Cat. 3, 4, 5 cable EIA/TIA-568 100-ohm (100m) 100BaseT: 2-pair UTP/STP Cat.5 cable EIA/TIA-568 100-ohm (100m) 1000BaseTX: UTP/STP Cat.5/5E cable; EIA/TIA-568 100-ohm (100m)
Power Requirements	
Input Voltage	12-48VDC, Redundant Input
Overload Current Protection	Present (Slow-Blow Fuse)
Power Connection	1 removable 6-contact terminal block
Reverse Polarity Protection	Present
Power Consumption	7.8Watts
Relay Contact	24VDC, 1A resistive

Specification

Mechanical Characteristics	
Housing	Metal, IP 30 protection
Dimensions	30 x 140 x 95 mm (W x H x D)
Weight	Unit Weight: 0.45kg, Shipping Weight: 0.65kg
Mounting	DIN-Rail Mounting, Wall Mounting
Environmental Limits	
Operating Temperature	STD: -10°C to +65°C (14°F to +149°F); EOT: -40°C to +75°C (-40°F to +167°F)
Storage Temperature	-40°C to +85°C (-40°F to 185°F)
Ambient Relative Humidity	5 to 95%, (non-condensing)
Regulatory Approvals	
EMI	FCC Part 15 Subpart B Class A, CE EN 55022 Class A
EMS	IEC61000-4-2 (ESD), IEC61000-4-3 (RS), IEC61000-4-4 (EFT), IEC61000-4-5 (Surge), IEC61000-4-6 (CS), IEC61000-4-8 (Magnetic Field)
Free Fall	IEC60068-2-32
Shock	IEC60068-2-27
Vibration	IEC60068-2-6
Green	RoHS 3 Compliant
Safety	UL 61010-1, UL61010-2-201, ISA 12.12.01 E-Mark for EX-6225—(T)E series only
Corrosion Protection	IEC 60068-1-11, IEC 60068-2-52, IEC 60068-2-60, IPC-CC830B, MIL-I-46058C, IEC 61086-2 (Class 2), UL94, UL 746E, ISP 9223 (ClassC5-Very High, Class CX-Extreme), ANSI/ISA 71.04 Class GX-Severe
Compliance	NEMA TS2 (IST) - EoT version
Warranty	5 Years

Dimension



Operating System

Can be used for all Operating System

Approved



Packaging

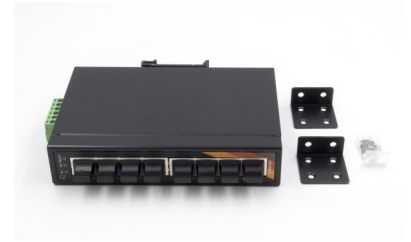


Accessories

Picture

EX-6973

Din-Rail Power Supply HDR-60-24



EX-K1110

2 wire cable from Terminal Block to DC-Jack

