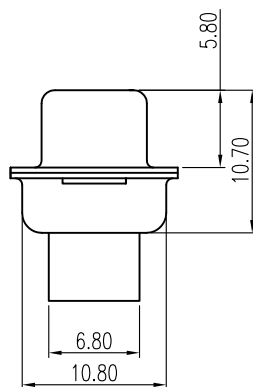
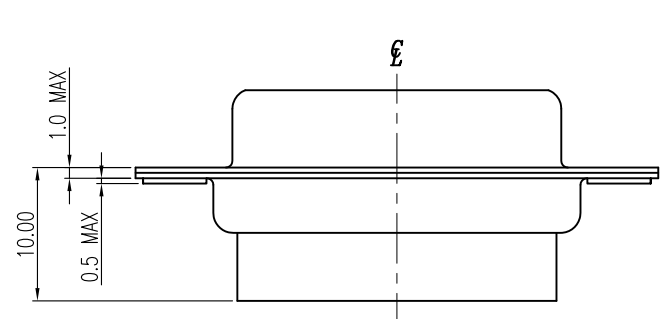
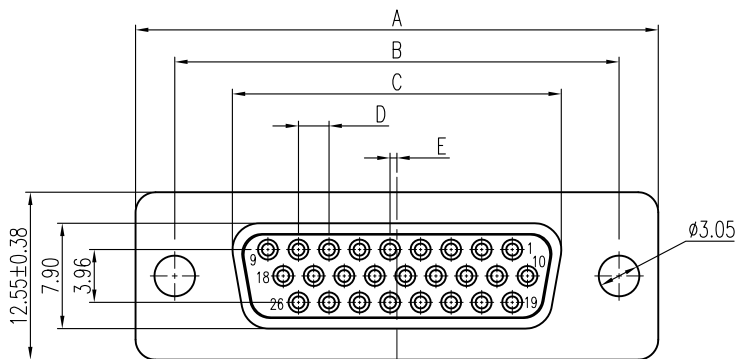


This document is the property of Amphenol Corporation and is delivered on the express condition that it is not to be disclosed, reproduced or used, in whole or in part, for manufacture or sale by anyone other than Amphenol Corporation without its prior consent, & that no right is granted to disclose or to use any information in this document.

Customer Drawing



Shell size	Position	A ±0.38	B	C	D	E
E	15S	30.81	24.99	16.33	2.29	0.25
A	26S	39.19	33.32	24.66	2.29	0.51
B	44S	53.04	47.04	38.38	2.29	0.51
C	62S	69.32	63.50	54.84	2.41	0.58

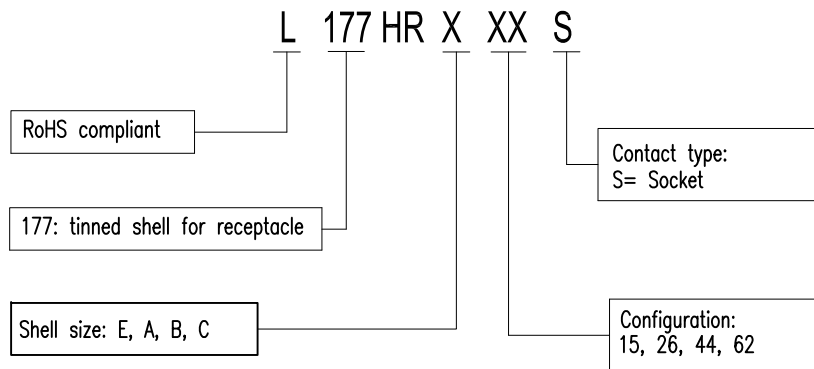


REVISIONS				
SYM	ECN	DESCRIPTION	DATE	APPROVED
1	HK--	First Release Drawing	01/02/14	IP
1	HK--	adding demension "E"	07/10/18	IP

D-SUB TECHNICAL DATA

SHELL : SPCC, 100u" min tin over 50u" min nickel over 50u" copper.
 BODY : PBT, UL 94V-0, Color:Black.
 ELECTRICAL : Withstanding Voltage >1000 V RMS
 Insulation resistance >1000 M Ohms
 MARKING : Amphenol...(Series No.)
 Commercial reference
 Manufacturing date

PRODUCT CODE



UNLESS OTHERWISE SPECIFIED TOLERANCES	APPROVAL		DATE
	U.S.	METRIC	
.X +/-	0.50	DRAWN	Simon Chen 07/10/18
.XX +/-	0.30	CHECKED	Tony Tang 07/10/18
.XXX +/-	0.20	CHECKED	
FRACTIONS +/-	5'	DRAWING FILE :	
ANGLES +/-		ANGLE OF PROJECTION	
FOR MATERIALS AND FINISHES SEE NOTES			
REMOVE SHARP EDGES			
DIMENSIONS		SCALE NONE	
U.S. INCHES	METRIC MM	SHEET 1 OF 1	

Amphenol		
TITLE D-SUB connector, Crimping type Series		
SIZE	DRAWING NO.	REV.
A4	L177HRXXXS	2