

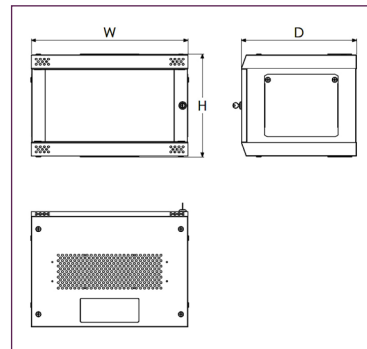


CamRack-QX

Product overview

19" wall mounted cabinets, designed for cabling, telecommunications, IT, industrial and home installations.

- Delivered flat packed for ease of access to all installations. Also reduces associated logistic costs and offers greater protection during transit
- Fast and efficient 3 minute assembly without tools
- 2x 19" mounting profiles. Variable depth, in 20mm increments
- Fast fixings ¼ turn locks
- Quick release door. Tempered safety glass
- Easily removable side panels with 2x ¼ turn locks
- Easily drilled plastic blanking covers for cable entry
- Template for wall mounting, included
- Maximum recommended load capacity: 45kg
- Finishes: Epoxy paint, RAL 7016
- Flat packed - assembled in 3 minutes!



| RED | BLUE | ORANGE | WHITE | BLACK | U | WIDTH | DEPTH | HEIGHT |
|-----------|-----------|-----------|-----------|-----------|-----|-------|-------|--------|
| CQX064211 | CQX064212 | CQX064213 | CQX064214 | CQX064215 | 6U | 578mm | 421mm | 376mm |
| CQX094211 | CQX094212 | CQX094213 | CQX094214 | CQX094215 | 9U | 578mm | 421mm | 509mm |
| CQX125211 | CQX125212 | CQX125213 | CQX125214 | CQX125215 | 12U | 578mm | 521mm | 643mm |
| CQX155211 | CQX155212 | CQX155213 | CQX155214 | CQX155215 | 15U | 578mm | 521mm | 776mm |

KEY FEATURES

Quick release door | Fast and efficient | Supplied flat-pack

Standard corner colours:



White



Red



Blue



Orange



Black

Other corner colours available upon request:



Yellow



Green



Purple



Lilac



Grey

ACCESSORIES

19" profiles

- Extra pair of 19" mount profiles
- Manufactured in steel
- Powder coated anthracite RAL 7016



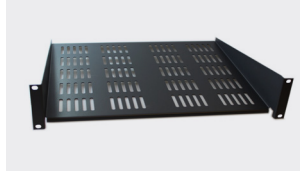
| PART NO. | U | DESCRIPTION |
|-----------|-----|--------------------------------|
| CQX010006 | 6U | CamRack-QX 6U profiles (pair) |
| CQX010009 | 9U | CamRack-QX 9U profiles (pair) |
| CQX010012 | 12U | CamRack-QX 12U profiles (pair) |
| CQX010015 | 15U | CamRack-QX 15U profiles (pair) |



ACCESSORIES

Cantilever tray

- Manufactured from 1.5mm steel
- 19" assembly with four anchoring points on the front sections
- Recommended maximum static load: 10/20 Kg
- Standard ventilation slots
- Front fastening height 2U
- One tray with mounting hardware
- Standard depths 180, 280, 350, 400mm
- Grey graphite epoxy paint, anthracite - RAL 7016
- One tray (screws not included)



| PART NO. | U | DEPTH |
|-----------|----|-------|
| CAX2TY180 | 2U | 180mm |
| CAX2TY280 | 2U | 280mm |
| CAX2TY350 | 2U | 350mm |
| CAX2TY400 | 2U | 400mm |

Cantilever telescopic tray

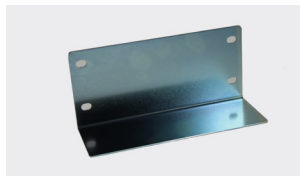
- Ideal for holding keyboards
- Manufactured from 1.5mm steel
- 19" assembly with four anchoring points on the front sections
- Recommended maximum static load- 10kg
- Standard ventilation slots
- Front fastening height 2U
- Standard depths 280mm
- Finish: Black epoxy paint
- Telescopic guide rails nickel plated
- One tray, one pair telescopic guides, one front handle



| PART NO. | U | DEPTH |
|-----------|----|-------|
| CAXCTT280 | 2U | 280mm |

Front guides mounting

- 19" support guides, used as additional support for 19" equipment
- Attached to rack by two anchoring points with M6 bolts
- Manufactured from 2mm zintec
- Zintec plated coating
- One pair of guides and assembly hardware



| PART NO. | DESCRIPTION |
|-----------|----------------------|
| CAXFMG001 | Front guide mounting |

Attachment set

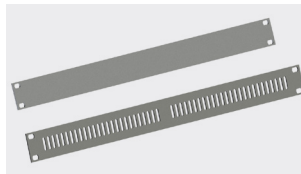
- M6x15mm screw, PA washer, M6 caged nut



| PART NO. | DESCRIPTION |
|-----------|----------------------------|
| CAX000001 | Attachment set (pack of 4) |

19" silver front panel

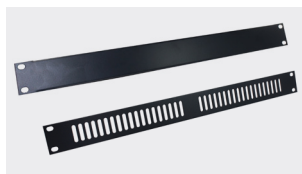
- Manufactured from 3mm aluminium, clear anodised
- Vented and solid profiles



| STANDARD FRONT | VENTED FRONT | U | HEIGHT (MM) |
|----------------|--------------|----|-------------|
| CAX19SPS1 | CAX19VPS1 | 1U | 43.6mm |
| CAX19SPS2 | CAX19VPS2 | 2U | 88.1mm |
| CAX19SPS3 | CAX19VPS3 | 3U | 132.5mm |
| CAX19SPS4 | CAX19VPS4 | 4U | 177.0mm |
| CAX19SPS5 | CAX19VPS5 | 5U | 221.5mm |
| CAX19SPS6 | CAX19VPS6 | 6U | 265.9mm |
| CAX19SPS9 | CAX19VPS9 | 9U | 399.2mm |

19" panel anthracite

- Manufactured from steel
- Powder coated (RAL 7016)
- Vented and solid panels



| STANDARD FRONT | VENTED FRONT | U | HEIGHT (MM) |
|----------------|--------------|----|-------------|
| CAX19SPA1 | CAX19VPA1 | 1U | 43.6mm |
| CAX19SPA2 | CAX19VPA2 | 2U | 88.1mm |
| CAX19SPA3 | CAX19VPA3 | 3U | 132.5mm |
| CAX19SPA4 | CAX19VPA4 | 4U | 177.0mm |
| CAX19SPA5 | CAX19VPA5 | 5U | 221.5mm |
| CAX19SPA6 | CAX19VPA6 | 6U | 265.9mm |
| CAX19SPA9 | CAX19VPA9 | 9U | 399.2mm |