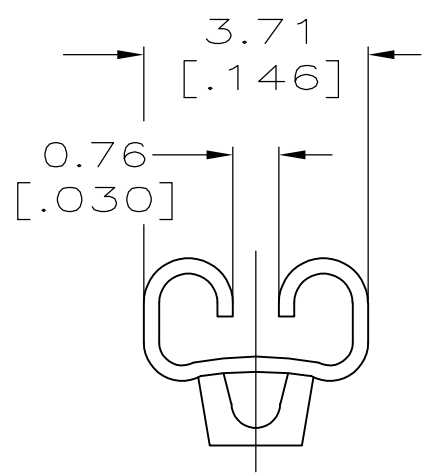
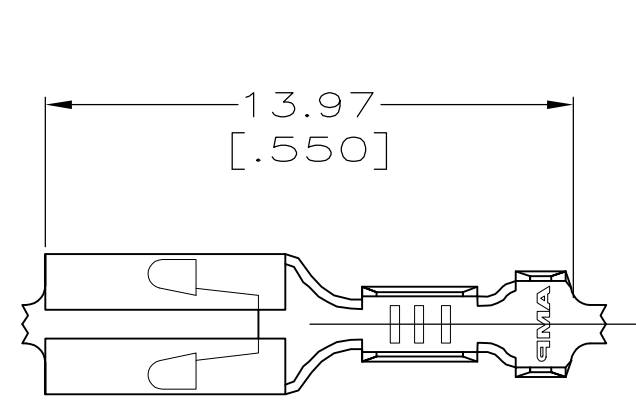


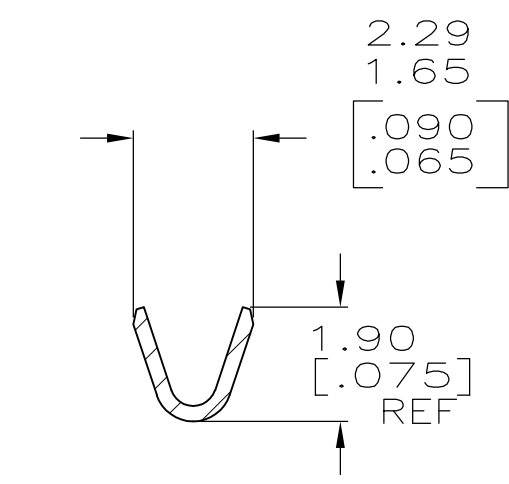
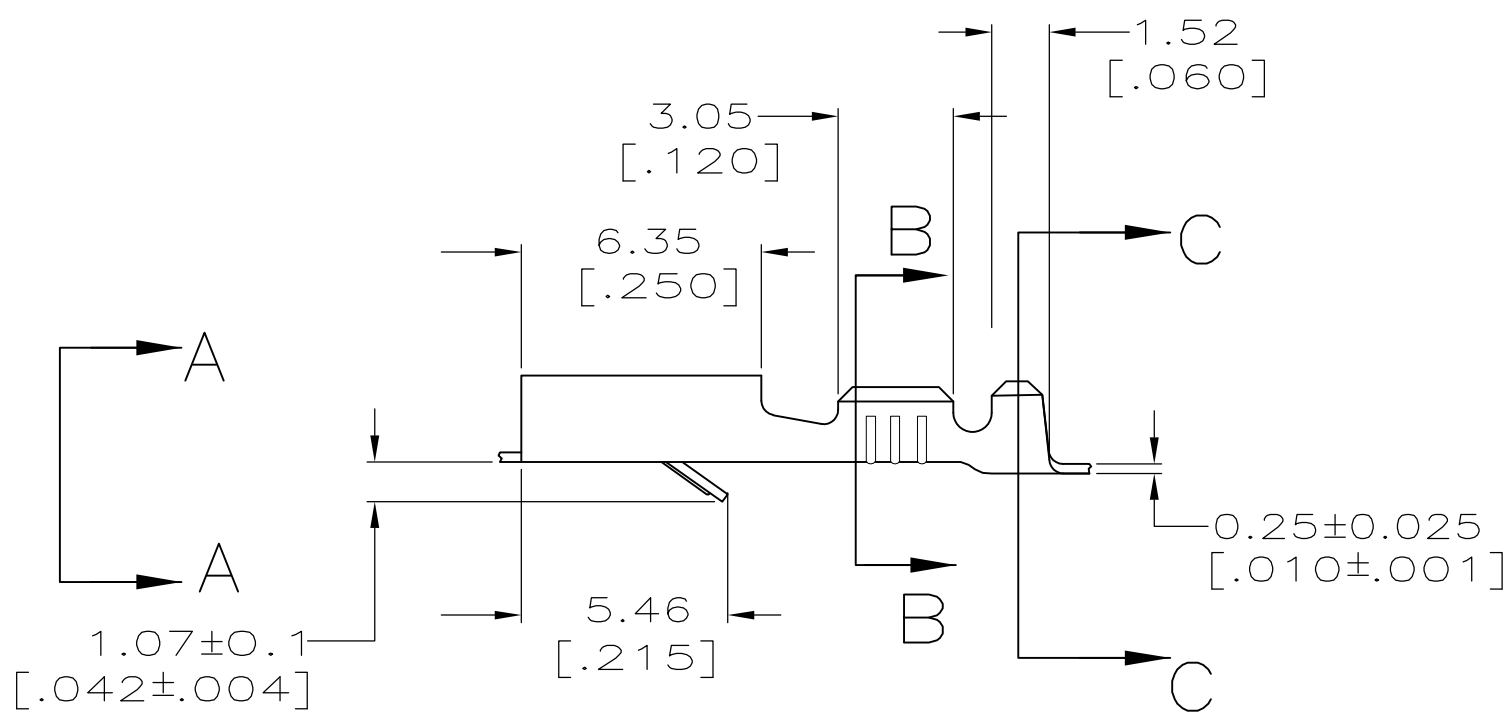
THIS DRAWING IS UNPUBLISHED. RELEASED FOR PUBLICATION  
 © COPYRIGHT - By - ALL RIGHTS RESERVED.

LOC	DIST	REVISIONS					
AF	50	P	LTR	DESCRIPTION	DATE	DWN	APVD
			J3	REVISED PER ECO-11-005027	11MAR11	RK	HMR

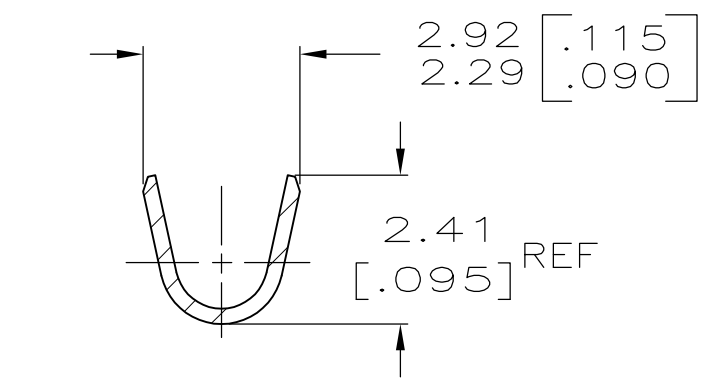


VIEW A-A  
SCALE 8:1

- 1 CONTINUOUS STRIP ON REELS.
- 2 MATING TAB THK TO BE  $0.81 \pm 0.025$  [.032 ± .001].
- 3 WIRE SIZE IS [#24-#20] AWG.
- 4 INSULATION RANGE IS 1.27-2.03 [.050-.080] DIA.



SECTION B-B  
SCALE 8:1



SECTION C-C  
SCALE 8:1

OBSOLETE

-	1217281-3
PRE-TIN	1217281-2
0.002032 [.000080] MIN TIN	1217281-1
FINISH	PART NO.

F	2.29 [.090]	3.96 [.156]	F	1.40 [.055]	1.02 [.040] [#20]	
					0.91 [.036] [#22]	
					0.84 [.033] [#24]	
TYPE	WIDTH	STRIP LENGTH ±0.38 ±[.015]	TYPE	WIDTH	±.051 [±.002] HEIGHT	WIRE
INSUL BARREL CRIMP			WIRE BARREL CRIMP			

THIS DRAWING IS A CONTROLLED DOCUMENT.

DIMENSIONS: mm[INCHES]	TOLERANCES UNLESS OTHERWISE SPECIFIED:	DWN JR RUTH 29NOV99	TE Connectivity RECEPTACLE, FASTIN-FASTON, 2.79 [.110] SERIES
	0 PLC ± -	CHK MS FEHER 29NOV99	
	1 PLC ± -	APVD D BRATINA 29NOV99	
	2 PLC ± 0.38 [.015]	PRODUCT SPEC	
	3 PLC ± -	APPLICATION SPEC	NAME
	4 PLC ± -	114-2065	SIZE
	ANGLES ± -	WEIGHT	CAGE CODE
MATERIAL	FINISH	CUSTOMER DRAWING	DRAWING NO
H04 BRASS	SEE TABLE	SCALE 5:1	A3 00779 C-1217281
		SHEET 1 OF 1	RESTRICTED TO
		REV J3	