



## LPT Connector Series

The new LPT Series from Amphenol Industrial Operations (AIO) is based on the MIL-C-26482 Series I. Amphenol's original PT Series is a cost effective metal bayonet connector versed in all major global signal application markets.

The LPT Series is an evolution of AIO's well-known PT connector, with the same 26482 Series I industry standard mating compatibility, ability to accept wire gauges from 22AWG/0.34mm<sup>2</sup> to 12AWG/3.5mm<sup>2</sup>, and an IP67 rating. Available in several styles, with varying design characteristics and custom options to meet cost considerations and provide maximum design flexibility.

The LPT Series is the ideal choice for signal applications and industrial installations around the world.

### Features:

- Aluminum shell, light and reliable
- Multiple shell plating options, including Gray ZnNi which is effective up to 500 hours of salt spray
- Standard PT shell and coupling nut, intermateable with PT Series
- 3-tine Stamped & Formed crimp contacts
- Accepts wire gauges from 22AWG/0.34mm<sup>2</sup> to 12AWG/3.5mm<sup>2</sup>
- Quick positive bayonet coupling and 5 key/keyway mating
- High Shock and High Vibration capabilities
- IP67 Rating (mated)
- 500 mating cycles
- UL94 V-0 (Self-Extinguishing)
- Wide Operating Temperature Range (-40°C to 125°C)

## Specifications:

### Electrical Characteristics

- 5 milliohms max
- Accepts wire gauges from 22AWG/0.34mm<sup>2</sup> to 12AWG/3.5mm<sup>2</sup>

<b>Test Current</b>	20# contact 7.5A	16# contact 13A	12# contact 23A
<b>Recommended operating AC voltage</b>	I# 250V	II# 500V	
<b>Test voltage AC, 60 Hz</b>	I# 1500V	II# 2300V	

### Mechanical Characteristics

- Standard PT shell and coupling nut, intermateable with PT Series
- Accepts wire gauges from 22AWG/0.34mm<sup>2</sup> to 12AWG/3.5mm<sup>2</sup>
- Quick positive bayonet coupling
- 5 key/keyway mating
- Wide Operating Temperature Range (-40°C to 125°C)
- UL94 V-0 (Self-Extinguishing)

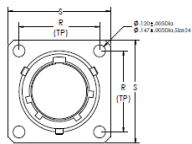


### Environmental Protection

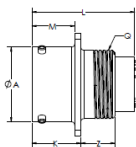
- IP67 rating (mated)

\*Contacts sold separately. Please refer to LPT catalog (IC-7)

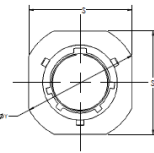
How to Order									
1	2	3	4	5	6	7	8	9	10
LPT	06	SE	12-	10	S	W	(023)	(EMI)	(LC)
Product Line	Shell Style	Service Classes	Shell Size	Insert Arrangement	Gender	Insert Rotation	Shell Plating	Variations	
LPT	00: Wall Mount Receptacle	A: General Duty	8	4	P: Pin	W	(023): Nickel	(SR): Strain relief clamp	Less contacts
	01: Inline Receptacle	SE: Open Wire Sealing	10	2,5,6	S: Socket	X	(027): Black Zinc (conductive)	Based on application	
	02: Box Mount Receptacle	G: Heat shrink boot adapter	12	3,4,8,10		Y	(025): Black Zinc (non-conductive)		
	07: Jam Nut Receptacle	SE(SR): Strain relief clamp	14	4,5,8,12,15,19,22,AA		Z	(072): Gray ZINi		
	06: Straight Plug	PG: Cable gland	16	8,26			(005B): Black Anodized		
			18	5,					
			20	16,41					
			22	25,36,55					
			24	31,61					



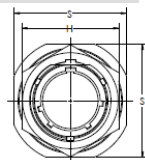
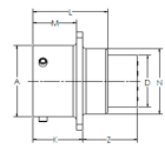
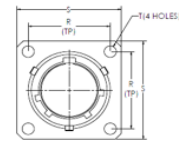
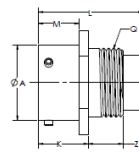
00: Wall Mount Receptacle



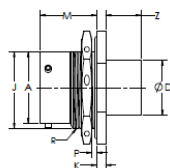
01: Inline Receptacle



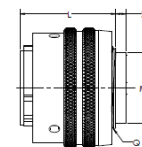
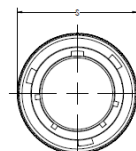
02: Box Mount Receptacle



07: Jam Nut Receptacle



06: Straight Plug



Notice: Specifications are subject to change without notice. Contact your nearest Amphenol Corporation Sales Office for the latest specifications. All statements, information and data given herein are believed to be accurate and reliable but are presented without guarantee, warranty, or responsibility of any kind, expressed or implied. Statements of suggestions concerning possible use of our products are made without representation or warranty that any such use is free of patent infringement and are not recommendations to infringe any patent. The user should assume that all safety measures are indicated or that other measures may not be required. Specifications are typical and may not apply to all connectors.

For further information on your individual application requirements, contact: Amphenol Corporation

North America:  
Amphenol Industrial Operations  
180 N. Freeport Drive, Plant 4  
Nogales, AZ 85621  
Tel: (888) 364-9011  
Fax: (520) 285-5134

Europe:  
Amphenol Industrial Operations Europe  
Via Barbaiana 5  
1-20020 Lainate (MI) Italy  
Tel: +39 02 93254.204  
Fax: +39 02 93254.444

Middle East:  
Amphenol Middle East Enterprises FZE  
Office C-37 PO Box 21107  
Ajman Free Zone, UAE  
Tel: +9 716-7422494  
Fax: +9 716-7422941

Asia:  
Amphenol Technology (Zhuhai) Co., Ltd.  
No. 63 Xing Han Road, San Zao Town  
Jin Wan District, Zhuhai City, China 519040  
Tel: +86 756-3989760  
Fax: +86 756-3989768

Email: tech@amphenol-aio.com

Email: info@amphenol-aio.com

Email: jhussain@amphenol-industrial.com

Email: enquiry@amphenol-aio.com

# Mouser Electronics

Authorized Distributor

Click to View Pricing, Inventory, Delivery & Lifecycle Information:

## Amphenol:

[LPT02SE-10-6P\(023\)\(LC\)](#) [LPT02SE-10-6P\(027\)\(LC\)](#) [LPT02SE-10-6P\(072\)\(LC\)](#) [LPT02SE-12-10P\(023\)\(LC\)](#)  
[LPT02SE-12-10P\(027\)\(LC\)](#) [LPT02SE-12-10P\(072\)\(LC\)](#) [LPT06SE-10-6S\(027\)\(LC\)](#) [LPT06SE-10-6S\(072\)\(LC\)](#)  
[LPT06SE-12-10S\(023\)\(LC\)](#) [LPT06SE-12-10S\(027\)\(LC\)](#) [LPT06SE-12-10S\(072\)\(LC\)](#) [LPT06SE-12-4S\(023\)\(LC\)](#)  
[LPT02SE-20-41P\(027\)\(LC\)](#) [LPT02SE-20-41P\(072\)\(LC\)](#) [LPT02SE-8-4P\(023\)\(LC\)](#) [LPT02SE-8-4P\(027\)\(LC\)](#) [LPT02SE-](#)  
[8-4P\(072\)\(LC\)](#) [LPT06SE-10-6S\(023\)\(LC\)](#) [LPT02SE-18-05P\(027\)\(LC\)](#) [LPT02SE-18-05P\(072\)\(LC\)](#) [LPT02SE-18-](#)  
[32P\(023\)\(LC\)](#) [LPT02SE-18-32P\(027\)\(LC\)](#) [LPT02SE-18-32P\(072\)\(LC\)](#) [LPT02SE-20-41P\(023\)\(LC\)](#) [LPT02SE-14-](#)  
[19P\(027\)\(LC\)](#) [LPT02SE-14-19P\(072\)\(LC\)](#) [LPT02SE-16-26P\(023\)\(LC\)](#) [LPT02SE-16-26P\(027\)\(LC\)](#) [LPT02SE-16-](#)  
[26P\(072\)\(LC\)](#) [LPT02SE-18-05P\(023\)\(LC\)](#) [LPT02SE-12-8P\(023\)\(LC\)](#) [LPT02SE-12-8P\(027\)\(LC\)](#) [LPT02SE-12-](#)  
[8P\(072\)\(LC\)](#) [LPT02SE-14-19P\(023\)\(LC\)](#) [LPT06SE-8-4S\(027\)\(LC\)](#) [LPT06SE-8-4S\(072\)\(LC\)](#) [LPT06SE-18-](#)  
[32S\(027\)\(LC\)](#) [LPT06SE-18-32S\(072\)\(LC\)](#) [LPT06SE-20-41S\(023\)\(LC\)](#) [LPT06SE-20-41S\(027\)\(LC\)](#) [LPT06SE-20-](#)  
[41S\(072\)\(LC\)](#) [LPT06SE-8-4S\(023\)\(LC\)](#) [LPT06SE-16-26S\(027\)\(LC\)](#) [LPT06SE-16-26S\(072\)\(LC\)](#) [LPT06SE-18-](#)  
[05S\(023\)\(LC\)](#) [LPT06SE-18-05S\(027\)\(LC\)](#) [LPT06SE-18-05S\(072\)\(LC\)](#) [LPT06SE-18-32S\(023\)\(LC\)](#) [LPT06SE-12-](#)  
[8S\(027\)\(LC\)](#) [LPT06SE-12-8S\(072\)\(LC\)](#) [LPT06SE-14-19S\(023\)\(LC\)](#) [LPT06SE-14-19S\(027\)\(LC\)](#) [LPT06SE-14-](#)  
[19S\(072\)\(LC\)](#) [LPT06SE-16-26S\(023\)\(LC\)](#) [LPT02SE-12-4P\(023\)\(LC\)](#) [LPT02SE-12-4P\(027\)\(LC\)](#) [LPT02SE-12-](#)  
[4P\(072\)\(LC\)](#) [LPT06SE-12-4S\(027\)\(LC\)](#) [LPT06SE-12-4S\(072\)\(LC\)](#) [LPT06SE-12-8S\(023\)\(LC\)](#)