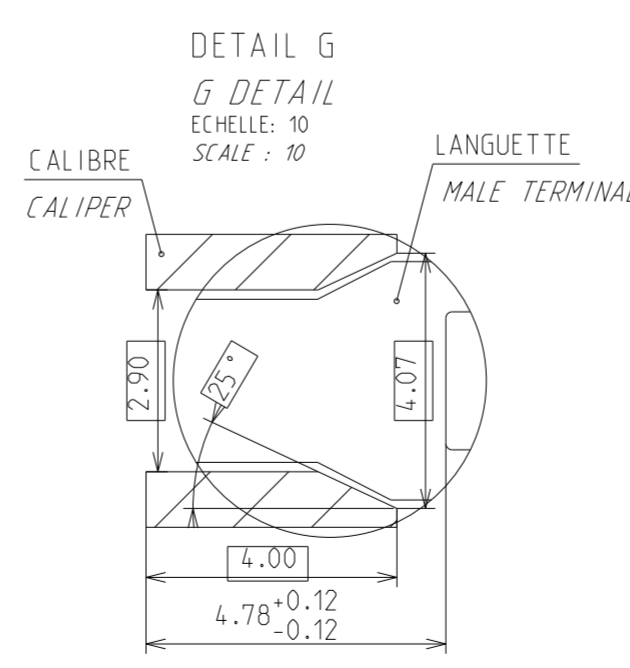
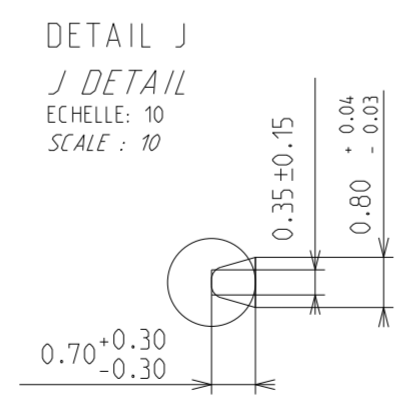
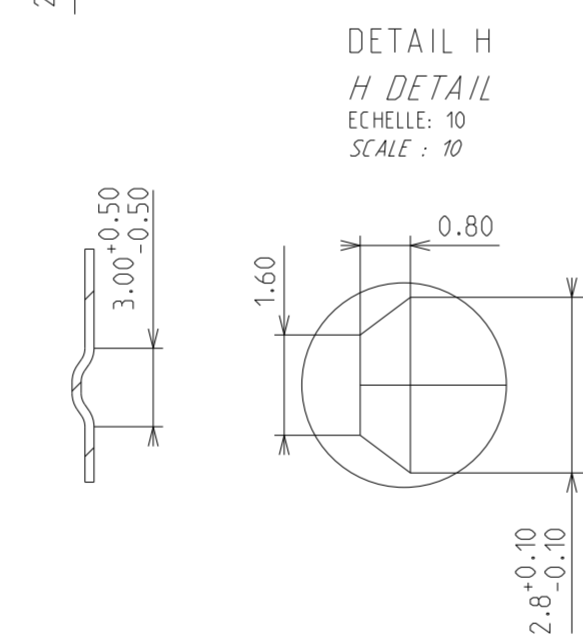
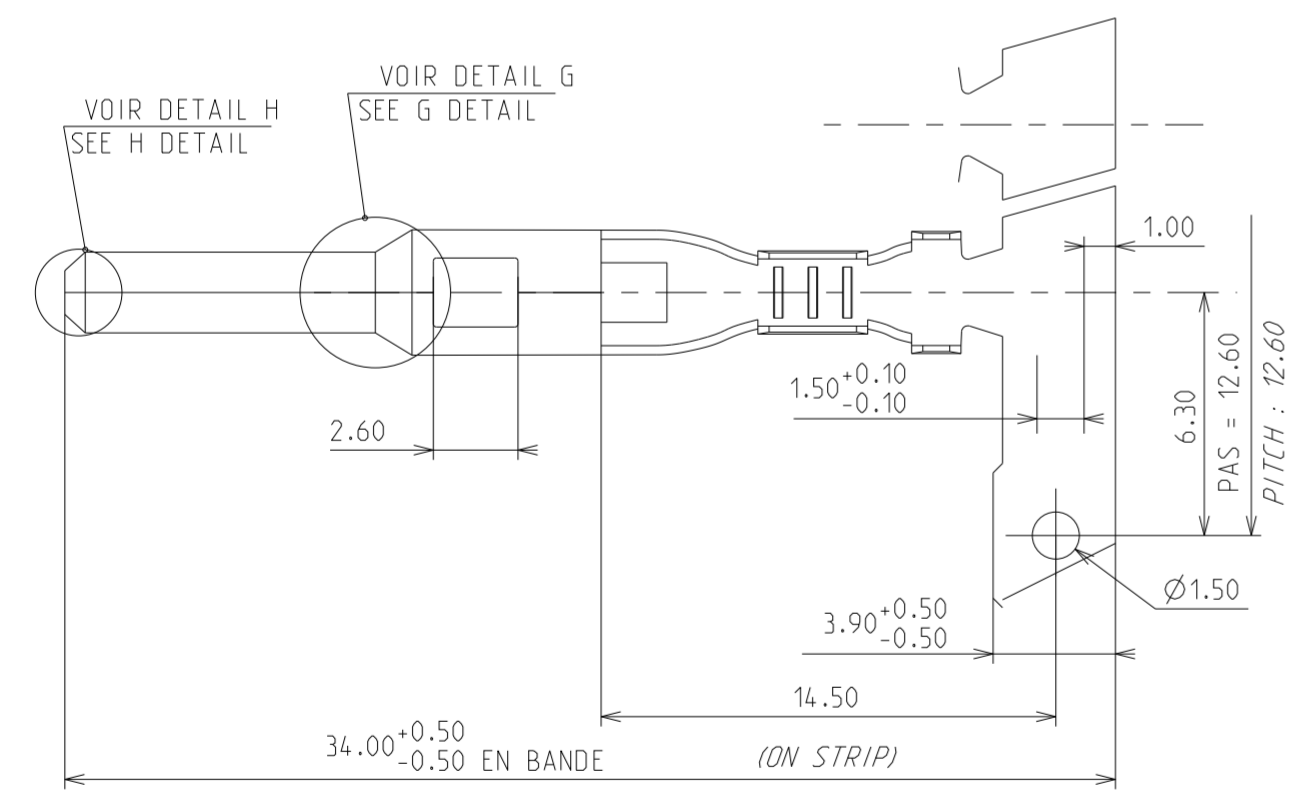
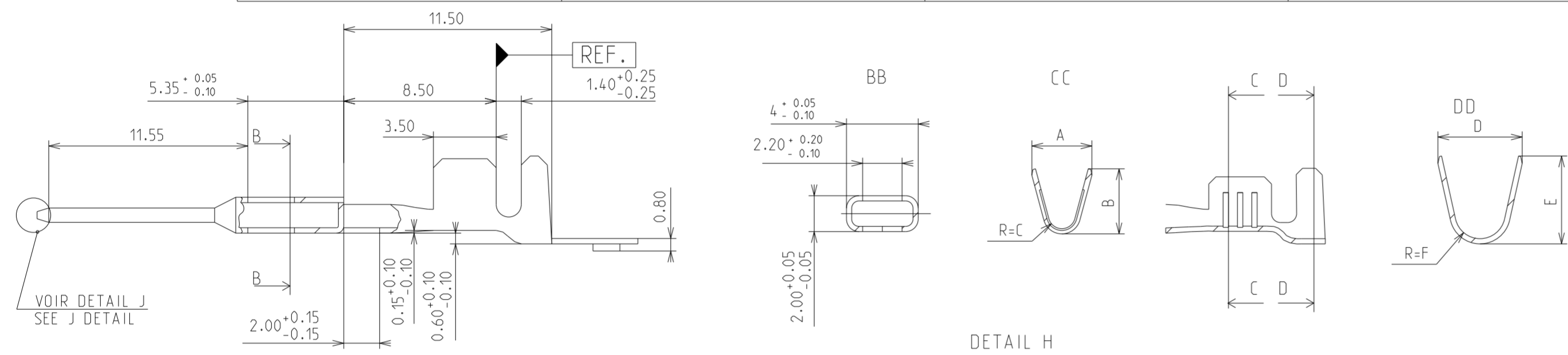


Etat / State		Références								Material	Classe
		JUF / SWS				JUF / SWS					
		MVL	DELPHI (B)	MVL	DELPHI (B)	MVL	DELPHI (B)	MVL	DELPHI (B)		
Pré-établé / Pre-tinned Sn 1 to 3µm	P/N	211 CL 3 S 1160	10779316	211 CL 3 S 1161	10781143	211 CL 3 S 2160	10756743	211 CL 3 S 2161	10793682	Cu Sn 0.1	125°
	Rev.	B	01	E	01	A	01	B	01		
Section / Gauge		0.35 to 0.75				1 to 2.5					
∅ Isolant ∅ Insulation		1.3 to 2.1				2.1 to 3					
A		2.9				3.4					
B		2.2				3.6					
R=C		0.9				0.9					
D ±0.3		4		4.3		4.7		5			
E		3.3		4.10		4.9		5.3			
R=F		1.4		1.4		1.4		1.7			
POIDS sans bande porteuse WEIGHT without strip carrier		0.00043Kg		0.00042Kg		0.00049Kg		0.00047Kg			



ECN-NO. / NUMERO ECR		POSITION		CHANGE DESCRIPTION / MODIFICATION	
PRODUCT SPEC. / SPECIF. PRODUIT		PACKAGING SPEC. / SPECIF. EMBALLAGE		APPLICATION SPEC. / SPECIF. APPLICATION	
TOLERANCES / TOLERANCES		MATERIAL: / MATIERE:		SURFACE FINISH / ETAT DE SURFACE	
COUNTERPART No. / CONTRE-PARTIE N°		COLOUR: / COULEUR:		ECO Loc. Code / CODE B.E.	
DO NOT MEASURE DRAWING / NE PAS PRENDRE DE COTES		TOOL NO. / OUTIL N°		ECO Loc. Code / CODE B.E.	
CREATED BY / CREE PAR		DATE / DATE		NAME / NOM	
MODIFIED BY / MODIF. PAR		DATE / DATE		TITLE / DESIGNATION	
CHECKED BY / VERIF. PAR		DATE / DATE		PROJECT / PROJET	
APPROVED BY / APPR. PAR		DATE / DATE		PROJECT / PROJET	
FILE NAME / NOM DE FICHIER		ESR NO. / NUMERO ESR		CAT. NO. / NUMERO CAT.	

DELPHI P/N ADDED

± 0.2 ± 0.2

SEE TABLE

DELPHI CORPORATION AND/OR ITS AFFILIATES. ALL RIGHTS RESERVED. REVISED

DELPHI P/N ADDED

28 X 0.8 MALE TERMINAL

SICMA 3

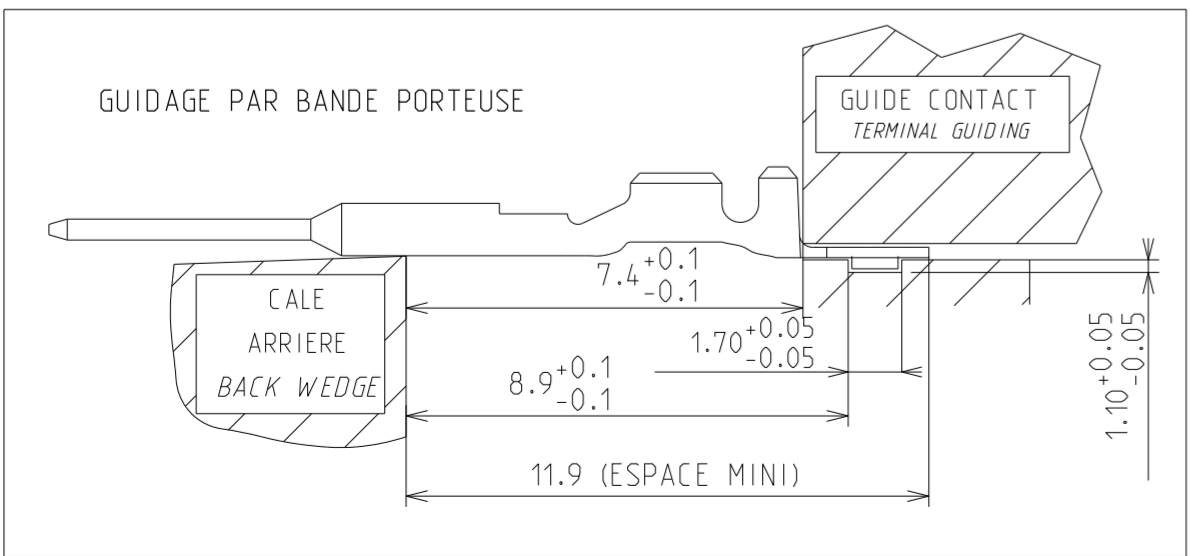
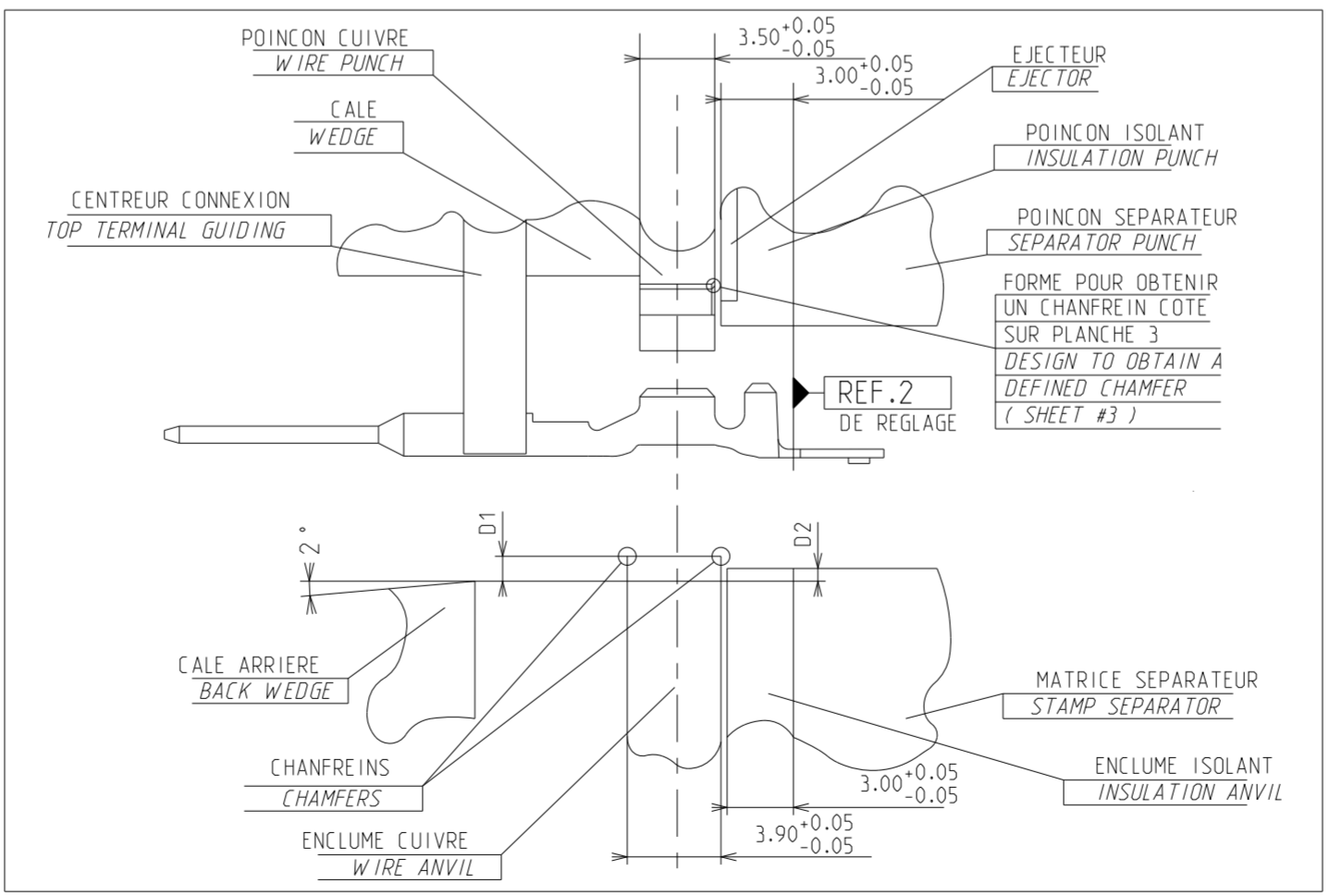
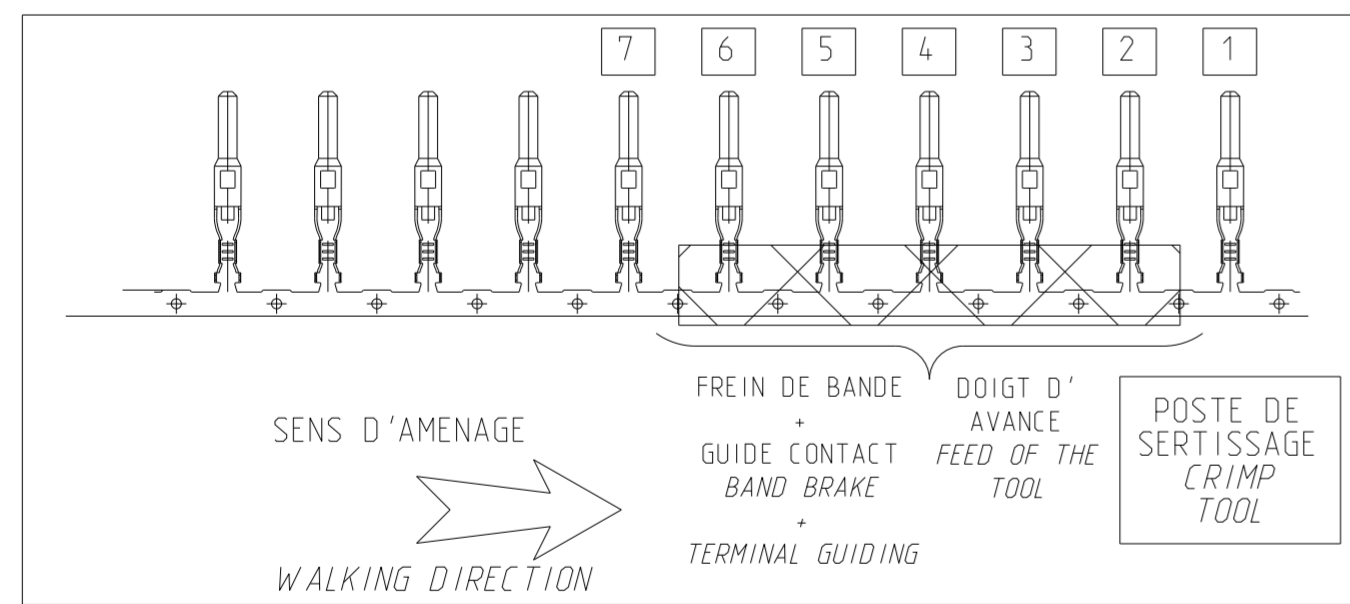
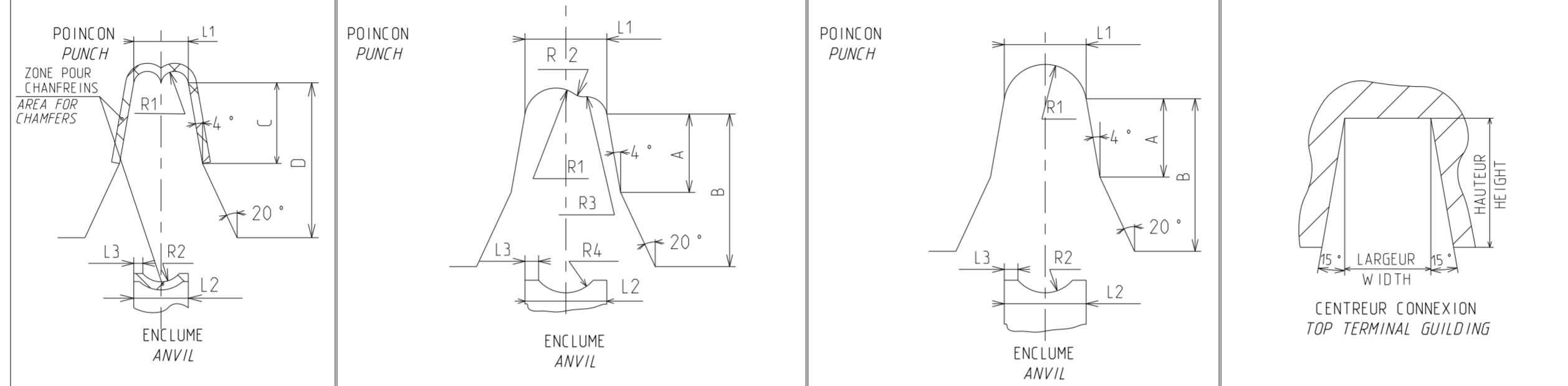
PCC0801503

Serial Released

See Table

EUR C04 112 F29 PDS

CONTACTS FEMALE TERMINAL		GAUGE SECTION	CUIVRE WIRE						ISOLANT												INSULATION				CENTREUR CONNEXION CONNEXION TOP TERMINAL GUIDING								
REFERENCE REFERENCE			POINCON PUNCH			ENCLUME ANVIL			DEPORT STEP BETWEEN BARRELS		FRETTAGE PAR RECOUVREMENT INSULATION BARREL WITH OVERLAPPING						FRETTAGE AVEC JOINT UNITAIRE SUR FIL INSULATION BARREL WITH SINGLE SEAL						LARGEUR WIDTH	EPAISSEUR THICKNESS	HAUTEUR HEIGHT	COURSE DISPLACEMENT							
MVL	DELPHI	C	D	L1	R1	L2	L3	R2	D1	D2	A	B	L1	R1	R2	R3	L2	L3	R4	D1	D2	A	B	L1	R1	L2	L3	R2					
211 CL 3 S 1160	10779316	0.35 TO 0.75	2.90	7.20	2.10	0.57	2.10	0.26	1.26	0.30	-0.30	3.60	8.10	2.50	0.93	0.50	0.65	2.50	0.21	1.50	0.30	-0.60	3.50	7.80	3.55	1.77	3.55	0.24	1.77	4.05 MINI	5	1.50	9
211 CL 3 S 1161	10781143																																
211 CL 3 S 2160	10756743	1 TO 2.5	3.70	8.20	2.85	0.77	2.85	0.36	1.50	0.00	-0.80	4.40	8.60	3.85	1.42	0.77	1.00	3.85	0.30	2.31	0.00	-1.10	4.00	8.00	4.10	2.05	4.10	0.27	2.05				
211 CL 3 S 2161	10793682																																



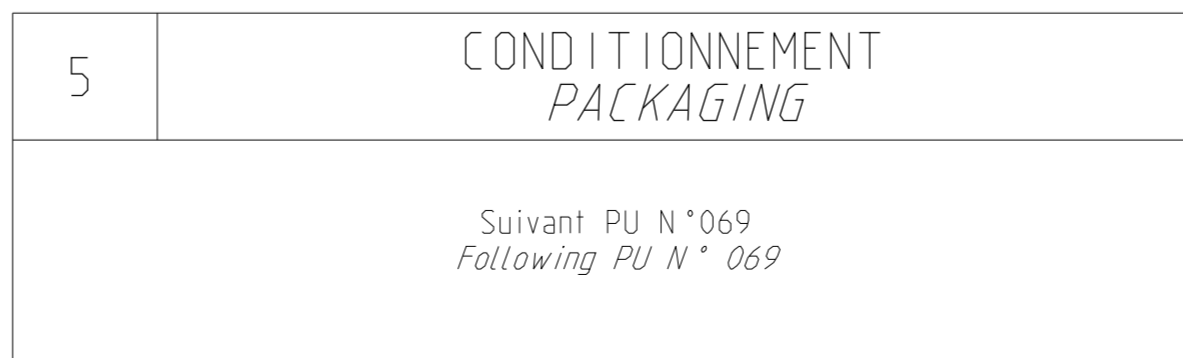
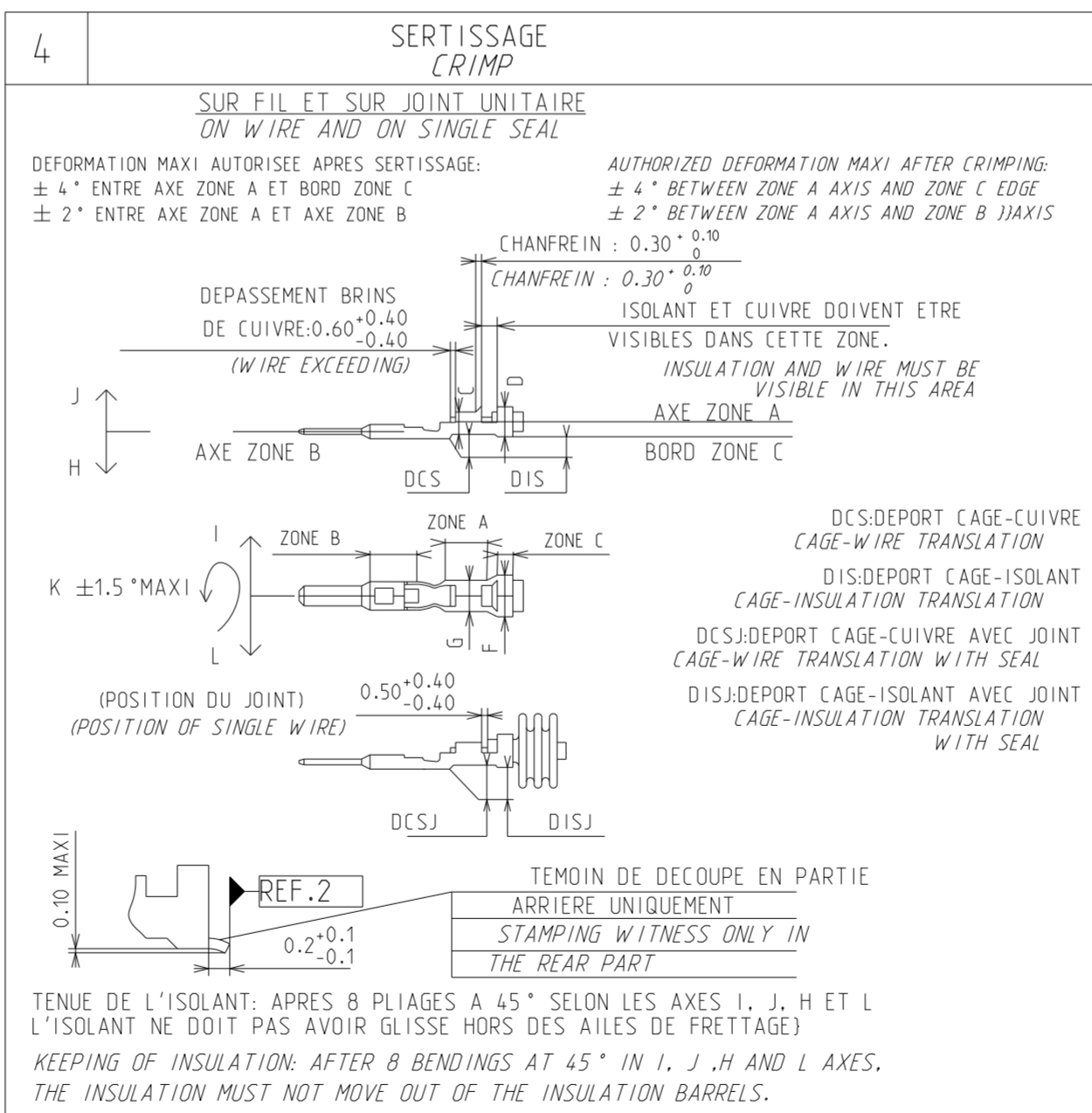
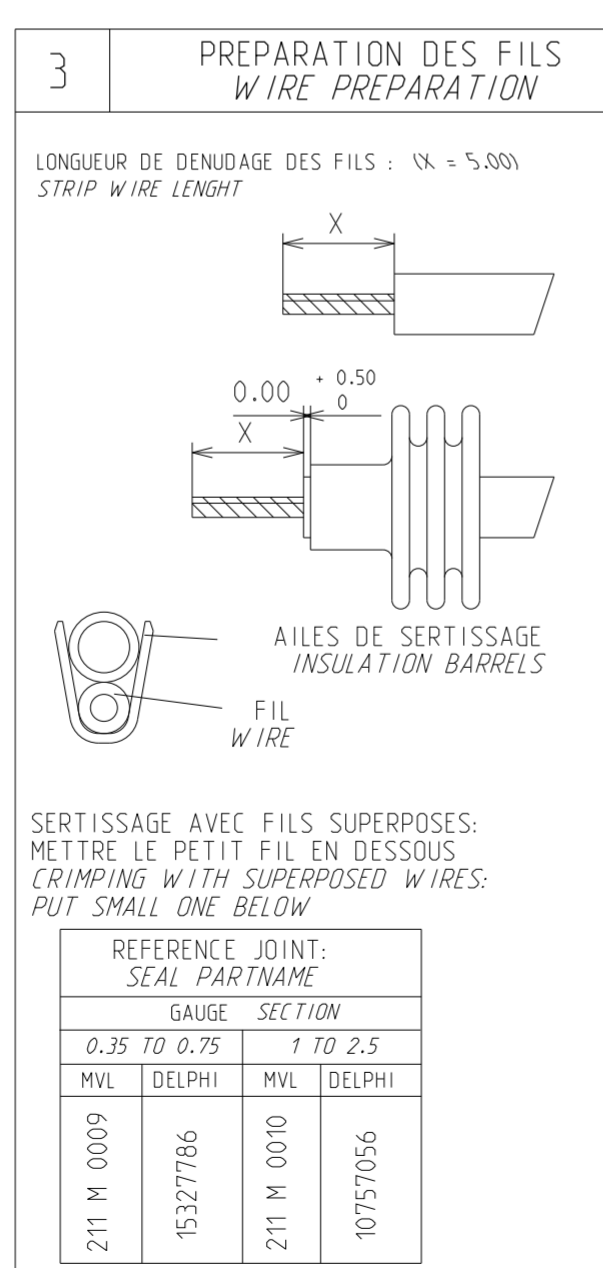
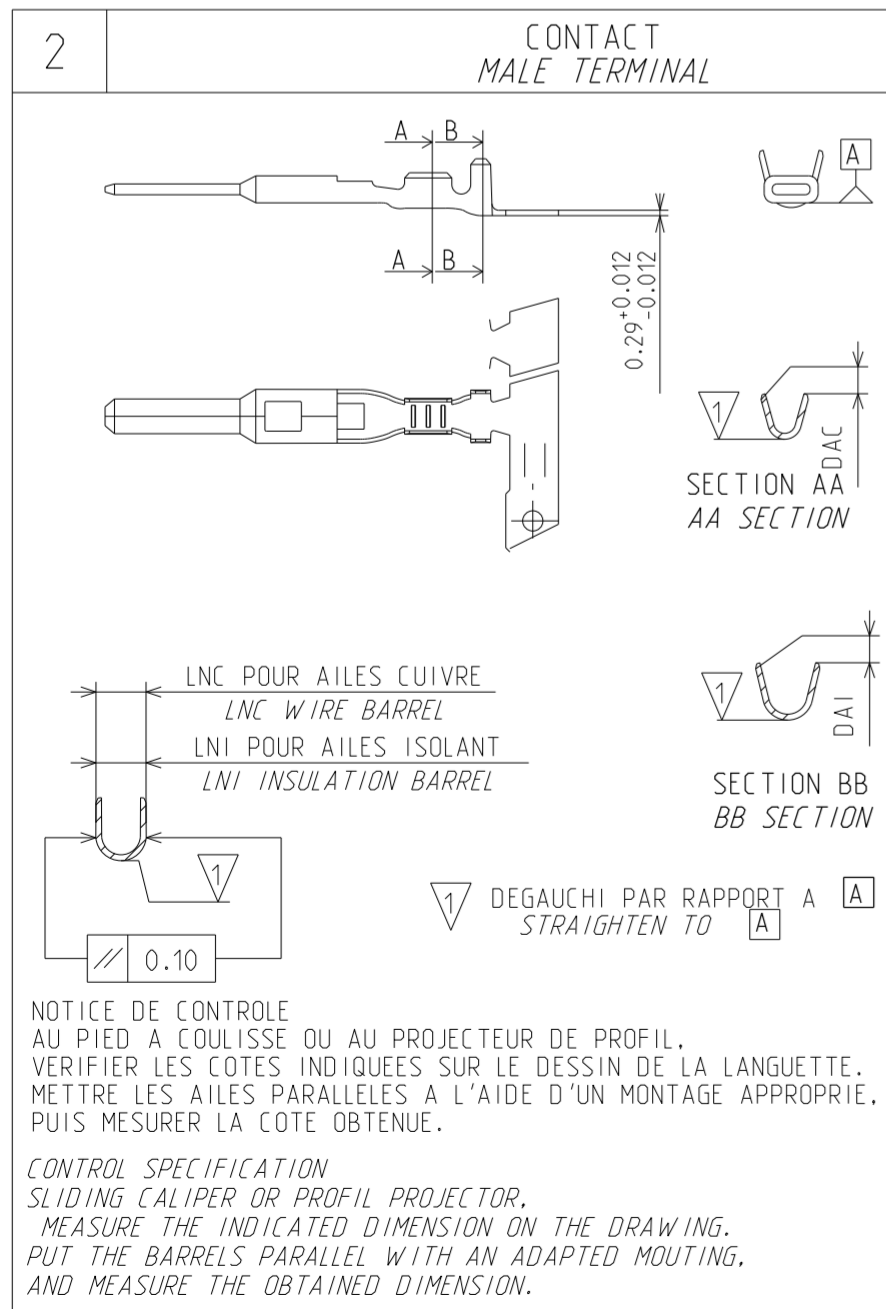
ECN-NO. NUMERO ECN		POSITION POSITION		CHANGE DESCRIPTION MODIFICATION	
PRODUCT SPEC. SPECIF. PRODUIT		PACKAGING SPEC. SPECIF. EMBALLAGE		APPLICATION SPEC. SPECIF. APPLICATION	
TOLERANCES TOLERANCES		MATERIAL : MATIERE :		SURFACE FINISH ETAT DE SURFACE	
COUNTERPART No. CONTRE-PARTIE N°		COLOUR : COULEUR :		DELPHI P/N ADDED	
DO NOT MEASURE DRAWING NE PAS PRENDRE DE COTES		ECO Loc. Code CODE B.E.		FE	
CREATED BY CREE PAR		DATE DATE		NAME NOM	
MODIFIED BY MODIF. PAR		DATE DATE		NAME NOM	
CHECKED BY VERIF. PAR		DATE DATE		NAME NOM	
APPROVED BY APPR. PAR		DATE DATE		NAME NOM	
FILE NAME NOM DE FICHIER		PCC0801503		28 X 0.8 MALE TERMINAL	
TOLERANCES TOLERANCES		MATERIAL : MATIERE :		SURFACE FINISH ETAT DE SURFACE	
COUNTERPART No. CONTRE-PARTIE N°		COLOUR : COULEUR :		DELPHI P/N ADDED	
DO NOT MEASURE DRAWING NE PAS PRENDRE DE COTES		ECO Loc. Code CODE B.E.		FE	
CREATED BY CREE PAR		DATE DATE		NAME NOM	
MODIFIED BY MODIF. PAR		DATE DATE		NAME NOM	
CHECKED BY VERIF. PAR		DATE DATE		NAME NOM	
APPROVED BY APPR. PAR		DATE DATE		NAME NOM	
FILE NAME NOM DE FICHIER		PCC0801503		28 X 0.8 MALE TERMINAL	
TOLERANCES TOLERANCES		MATERIAL : MATIERE :		SURFACE FINISH ETAT DE SURFACE	
COUNTERPART No. CONTRE-PARTIE N°		COLOUR : COULEUR :		DELPHI P/N ADDED	
DO NOT MEASURE DRAWING NE PAS PRENDRE DE COTES		ECO Loc. Code CODE B.E.		FE	
CREATED BY CREE PAR		DATE DATE		NAME NOM	
MODIFIED BY MODIF. PAR		DATE DATE		NAME NOM	
CHECKED BY VERIF. PAR		DATE DATE		NAME NOM	
APPROVED BY APPR. PAR		DATE DATE		NAME NOM	
FILE NAME NOM DE FICHIER		PCC0801503		28 X 0.8 MALE TERMINAL	

EUR C04 112 F29 PDS

PARAMETRES DE SERTISSAGE CRIMP PARAMETERS																						
CONTACT MALE TERMINAL				SERTISSAGE CUIVRE WIRE BARREL				FRETTAGE ISOLANT INSULATION BARREL														
GAUGE SECTION	REFERENCE F.C.C. F.C.C. PARTNAME		REFERENCE PSA PARTNAME	DAC MAXI DAI MAXI	LNC n 0.25 LNI n 0.25	DCS n 0.10 DIS n 0.10	DCSJ n 0.10 DISJ n 0.10	SECTION SECTION		PAR RECOUVREMENT WITH OVERLAPPING		AVEC JOINT UNITAIRE WITH SINGLE SEAL		TYPE FIL WIRE								
	MVL	DELPHI						THEORIQUE THEORETIC	REELLE REAL	(LARGEUR) (WIDTH)	HAUTEUR HEIGHT	Ø EQU. Ø EQU.	(LARGEUR) (WIDTH)		(HAUTEUR) (HEIGHT)	(LARGEUR) (WIDTH)	(HAUTEUR) (HEIGHT)	IR ID				
0.35 TO 0.75	211 CL 3 S 1160	10779316		0.25	0.25	2.4	3.4	0.30	- 0.30	0.30	- 0.60	0.35	0.34	(2.10)	0.90	1.35	(2.57)	(2.02)	(3.28)	(3.09)		
												0.50	0.49	(2.11)	0.97	1.45	(2.58)	(2.05)	(3.31)	(3.13)		
												0.60	0.59	(2.12)	1.01	1.80	(2.59)	(2.20)				
												0.75	0.72	(2.13)	1.07	1.70	(2.58)	(2.15)	(3.37)	(3.24)		
1 TO 2.5	211 CL 3 S 1161	10781143		0.25	0.25	2.4	3.4	0.00	- 0.80	0.00	- 1.10	0.35 + 0.35	0.68	(2.13)	1.05	2.03	(2.59)	(2.31)				
												1.00	0.93	(2.83)	1.31	2.00	(3.89)	(2.58)			IR	
												1.40	1.33	(2.85)	1.42	1.85	(3.89)	(2.49)	(3.82)	(3.22)	ID	
												1.50	1.53	(2.87)	1.47	2.30	(3.90)	(2.80)				
												2.00	1.82	(2.88)	1.55	2.20	(3.90)	(2.72)	(3.91)	(3.58)		
												2.50	2.61	(2.93)	1.77	2.80	(3.92)	(3.23)			ID	
	211 CL 3 S 2160	10756743			0.25	0.25	2.4	3.4	0.00	- 0.80	0.00	- 1.10	0.35 + 0.60	0.93	(2.83)	1.31	2.39	(3.90)	(2.87)			
													0.35 + 1	1.27	(2.85)	1.40	2.56	(3.91)	(3.01)			IR
													0.50 + 0.50	0.98	(2.83)	1.32	2.19	(3.90)	(2.71)			
													0.50 + 1.50	2.02	(2.90)	1.61	2.79	(3.92)	(3.22)			ID
													0.60 + 0.60	1.18	(2.85)	1.38	2.71	(3.92)	(3.14)			
													0.60 + 1	1.52	(2.87)	1.47	2.87	(3.92)	(3.29)			
211 CL 3 S 2161	10793682			0.25	0.25	2.4	3.4	0.00	- 0.80	0.00	- 1.10	0.60 + 1.40	1.92	(2.89)	1.58	3.10	(3.94)	(3.53)				
												1 + 1	1.86	(2.89)	1.56	3.02	(3.93)	(3.44)			IR	
																2.79	(3.92)	(3.22)			ID	

(VALEUR): UNIQUEMENT POUR INFORMATION

(VALUE) : FOR INFORMATION ONLY



ECN-NO. NUMERO ECH	POSITION POSITION	CHANGE DESCRIPTION MODIFICATION	DELPHI P/N ADDED	
PRODUCT SPEC. SPECIF. PRODUIT	PACKAGING SPEC. SPECIF. EMBALLAGE	APPLICATION SPEC. SPECIF. APPLICATION	COPYRIGHT DELPHI CORPORATION AND/OR ITS AFFILIATES. ALL RIGHTS RESERVED. REVISED THIS DRAWING IS THE PROPERTY OF DELPHI CORPORATION AND CONTAINS DELPHI CONFIDENTIAL INFORMATION. THE REPRODUCTION, DISTRIBUTION AND UTILIZATION OF THIS DOCUMENT OR ITS RELATED CAD DATA, AS WELL AS COMMUNICATION OF ANY CONTENT TO OTHERS, WITHOUT EXPRESS AUTHORIZATION, IS PROHIBITED.	
TOLERANCES TOLERANCES	± 0.2 ± 2°	MATERIAL : MATIERE :	SEE TABLE	SURFACE FINISH ETAT DE SURFACE
COUNTERPART N° CONTRE-PARTIE N°		COLOUR : COULEUR :		DELPHI DELPHI PACKARD ELECTRICAL/ELECTRONIC ARCHITECTURE EPERON, FRANCE
DO NOT MEASURE DRAWING NE PAS PRENDRE DE COTES		TOOL NO. OUTIL N°		DIMENSION IN MILLIMETERS DIMENSIONS EN MILLIMETRES
CREATED BY CREE PAR	DATE DATE	NAME NOM	TITLE DESIGNATION	DRAWING NUMBER REF. PLAN
MODIFIED BY MODIF. PAR	2013/07/01	F FAURIE	PROJECT PROJET	PCC0801503
CHECKED BY VERIF. PAR	2013/07/02	L DOMERGUE	SICMA 3	REV. IND. REV. IND.
APPROVED BY APPR. PAR	2013/07/02	Patrice CAPPE	ESR NO. NUMERO ESR	APPROVAL LEVEL NIV. D'APPROBATION
FILE NAME NOM DE FICHIER	PCC0801503		FRA-0332	3
			DOCUMENT UNDER PDS CONTROL DOCUMENT GERE SOUS P.D.S. NO MODIFICATION ALLOWED OUTSIDE IPAS DE MODIFICATION EN DEHORS	3
				SCALE ECH. 1:1

Mouser Electronics

Authorized Distributor

Click to View Pricing, Inventory, Delivery & Lifecycle Information:

[Aptiv:](#)

[211CL3S1161-L](#)