

TOSHIBA CMOS DIGITAL INTEGRATED CIRCUIT SILICON MONOLITHIC

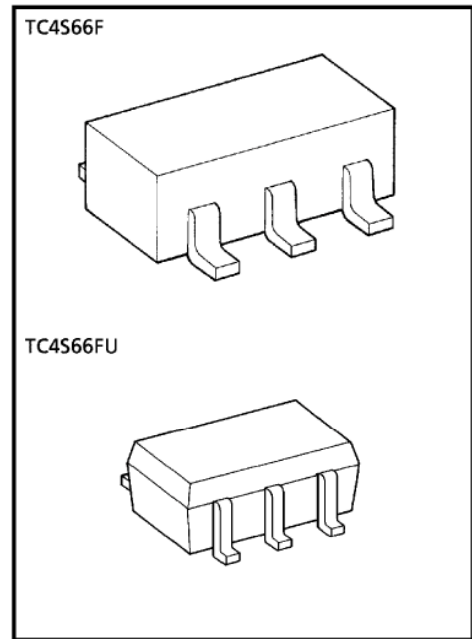
TC4S66F, TC4S66FU

BILATERAL SWITCH

TC4S66F/FU contains one circuit of bidirectional switches. When control input, CONT is set to "H" level, the impedance between input and output of the switch becomes low and when it is set to "L" level, the switch becomes high. This can be applied for switching of analog signals and digital signals.

FEATURES

- ON-resistance (R_{ON})
 - 300 Ω (Typ.) $V_{DD} - V_{SS} = 5\text{ V}$
 - 110 Ω (Typ.) $V_{DD} - V_{SS} = 10\text{ V}$
 - 70 Ω (Typ.) $V_{DD} - V_{SS} = 15\text{ V}$
- OFF-resistance (R_{OFF})
 - R_{OFF} (Typ.) $> 10^9\ \Omega$



Weight
 SSOP5-P-0.95 : 0.016 g (Typ.)
 SSOP5-P-0.65A : 0.006 g (Typ.)

MAXIMUM RATINGS

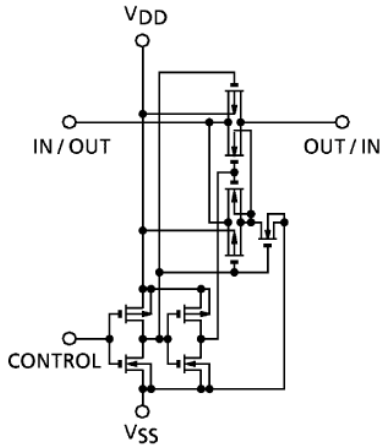
| CHARACTERISTIC | SYMBOL | RATING | UNIT |
|---|-------------|----------------------------------|--------------------|
| DC Supply Voltage | V_{DD} | $V_{SS} - 0.5 \sim V_{SS} + 20$ | V |
| Control Input Voltage | $V_{C\ IN}$ | $V_{SS} - 0.5 \sim V_{DD} + 0.5$ | V |
| Switch I/O Voltage | $V_{I/O}$ | $V_{SS} - 0.5 \sim V_{DD} + 0.5$ | V |
| Power Dissipation | P_D | 200 | mW |
| Potential difference across I/O during ON | $V_I - V_O$ | ± 0.5 | V |
| Control Input Current | $I_{C\ IN}$ | ± 10 | mA |
| Operating Temperature Range | T_{opr} | -40~85 | $^{\circ}\text{C}$ |
| Storage Temperature | T_{stg} | -65~150 | $^{\circ}\text{C}$ |
| Lead Temperature (10 s) | T_L | 260 | $^{\circ}\text{C}$ |

TRUTH TABLE

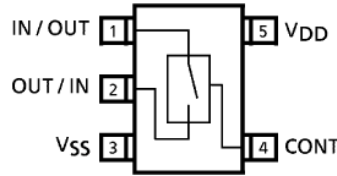
| CONTROL | IMPEDANCE BETWEEN IN/OUT-OUT/IN * |
|---------|-----------------------------------|
| H | $0.5 \sim 5 \times 10^2\ \Omega$ |
| L | $> 10^9\ \Omega$ |

* : See static electrical characteristics.

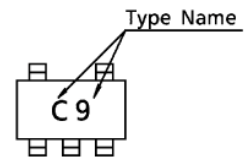
CIRCUIT DIAGRAM



PIN ASSIGNMENT (TOP VIEW)



MARKING



RECOMMENDED OPERATING CONDITIONS ($V_{SS} = 0\text{ V}$)

| CHARACTERISTIC | SYMBOL | MIN. | TYP. | MAX. | UNIT |
|----------------------|------------------|------|------|----------|------|
| DC Supply Voltage | V_{DD} | 3 | — | 18 | V |
| Input/Output Voltage | V_{IN}/V_{OUT} | 0 | — | V_{DD} | V |

STATIC ELECTRICAL CHARACTERISTICS (In case not specifically appointed, $V_{SS} = 0\text{ V}$)

| CHARACTERISTIC | SYM-BOL | TEST CONDITION | V_{DD} (V) | -40°C | | 25°C | | | 85°C | | UNIT |
|------------------------------|-----------|--|------------------------|-------|-----------|------|-----------|------------|------|------------|---------------|
| | | | | MIN. | MAX. | MIN. | TYP. | MAX. | MIN. | MAX. | |
| Control Input High Voltage | V_{IH} | $ I_{IS} = 10\ \mu\text{A}$ | 5 | 3.5 | — | 3.5 | 2.75 | — | 3.5 | — | V |
| | | | 10 | 7.0 | — | 7.0 | 5.50 | — | 7.0 | — | |
| | | | 15 | 11.0 | — | 11.0 | 8.25 | — | 11.0 | — | |
| Control Input Low Voltage | V_{IL} | $ I_{IS} = 10\ \mu\text{A}$ | 5 | — | 1.5 | — | 2.25 | 1.5 | — | 1.5 | V |
| | | | 10 | — | 3.0 | — | 4.5 | 3.0 | — | 3.0 | |
| | | | 15 | — | 4.0 | — | 6.75 | 4.0 | — | 4.0 | |
| On-State Resistance | R_{ON} | $0 \leq V_{IS} \leq V_{DD}$ $R_L = 10\ \text{k}\Omega$ | 5 | — | 800 | — | 290 | 950 | — | 1200 | Ω |
| | | | 10 | — | 210 | — | 120 | 250 | — | 300 | |
| | | | 15 | — | 140 | — | 85 | 160 | — | 200 | |
| Input/Output Leakage Current | I_{OFF} | $V_{IN} = 18\text{ V}$ $V_{OUT} = 0\text{ V}$ $V_{IN} = 0\text{ V}$ $V_{OUT} = 18\text{ V}$ | 18 | — | ± 100 | — | ± 0.1 | ± 100 | — | ± 1000 | nA |
| | | | 18 | — | ± 100 | — | ± 0.1 | ± 100 | — | ± 1000 | |
| Quiescent Device Current | I_{DD} | $V_{IN} = V_{DD}, V_{SS}$ | 5 | — | 0.25 | — | 0.001 | 0.25 | — | 7.5 | μA |
| | | | 10 | — | 0.5 | — | 0.001 | 0.5 | — | 15 | |
| | | | 15 | — | 1.0 | — | 0.002 | 1.0 | — | 30 | |
| Input Current | H Level | I_{IH} | $V_{IH} = 18\text{ V}$ | 18 | — | 0.1 | — | 10^{-5} | 0.1 | — | μA |
| | L Level | I_{OL} | $V_{IL} = 0\text{ V}$ | 18 | — | -0.1 | — | -10^{-5} | -0.1 | — | |

DYNAMIC ELECTRICAL CHARACTERISTICS (Ta = 25°C)

| CHARACTERISTIC | SYMBOL | TEST CONDITION | V _{SS} (V) / V _{DD} (V) | | MIN. | TYP. | MAX. | UNIT |
|--------------------------------------|--------------------------------------|--|---|---------------------|------|------|------|------|
| | | | V _{SS} (V) | V _{DD} (V) | | | | |
| Propagation Delay Time (IN-OUT) | t _{pLH} t _{pHL} | C _L = 50 pF | 0 | 5 | — | 15 | 40 | ns |
| | | | 0 | 10 | — | 8 | 20 | |
| | | | 0 | 15 | — | 5 | 15 | |
| Propagation Delay Time (CONTROL-OUT) | t _{pZL} t _{pZH} | R _L = 1 kΩ | 0 | 5 | — | 55 | 120 | |
| | | C _L = 50 pF | 0 | 10 | — | 25 | 40 | |
| | | | 0 | 15 | — | 20 | 30 | |
| Propagation Delay Time (CONTROL-OUT) | t _{pLZ} t _{pHZ} | R _L = 1 kΩ | 0 | 5 | — | 45 | 80 | |
| | | C _L = 50 pF | 0 | 10 | — | 30 | 70 | |
| | | | 0 | 15 | — | 25 | 60 | |
| Max. Control Input Repetition Rate | f _{MAX} (C) | R _L = 1 kΩ C _L = 50 pF | 0 | 5 | — | 10 | — | MHz |
| | | | 0 | 10 | — | 12 | — | |
| | | | 0 | 15 | — | 12 | — | |
| -3dB Cut Off Frequency | f _{MAX} (I/O) | R _L = 1 kΩ C _L = 50 pF (*1) | -5 | 5 | — | 30 | — | |
| Total Harmonic Distortion | — | R _L = 10 kΩ f = 1 kHz (*2) | -5 | 5 | — | 0.03 | — | % |
| -50dB Feedthrough Frequency | — | R _L = 1 kΩ (*3) | -5 | 5 | — | 600 | — | kHz |
| Crosstalk (CONTROL-OUT) | — | R _{IN} = 1 kΩ | 0 | 5 | — | 200 | — | mV |
| | | R _{OUT} = 10 kΩ C _L = 15 pF | 0 | 10 | — | 400 | — | |
| | | | 0 | 15 | — | 600 | — | |
| Input Capacitance | C _{IN} | Control Input | — | — | — | 5 | 7.5 | pF |
| | | Switch I/O | — | — | — | 10 | — | |
| Feedthrough Capacitance | C _{IN-OUT} | — | — | — | — | 0.5 | — | |

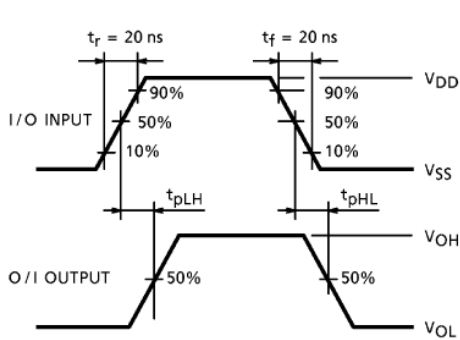
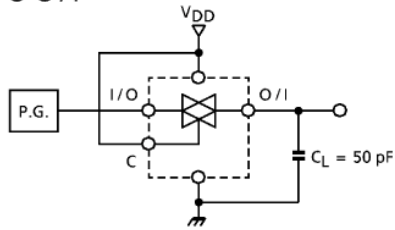
*1 : The frequency at $20\log_{10} \frac{V_{OS}}{V_{IS}} = -3 \text{ dB}$ shall be f_{MAX} (I/O) using sine wave of ±2.5 V_{p-p} for V_{IS}.

*2 : V_{IS} shall be sine wave of ±2.5 V.

*3 : The frequency at $20\log_{10} \frac{V_{OS}}{V_{IS}} = 50 \text{ dB}$ shall be the feed through using of ±2.5 V_{p-p}.

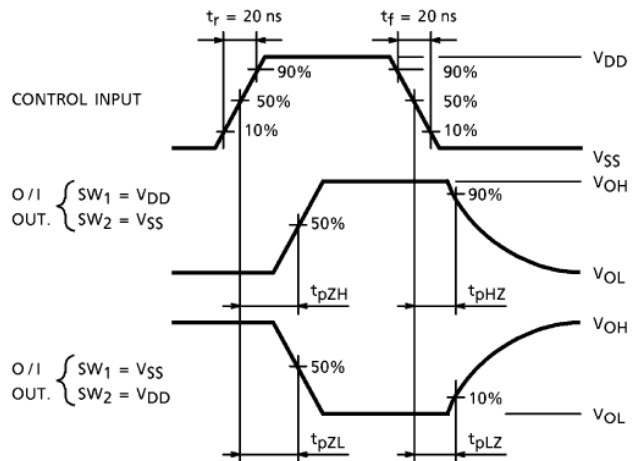
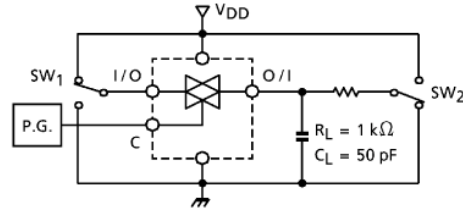
1. t_{pLH} , t_{pHL}

I/O-O/I

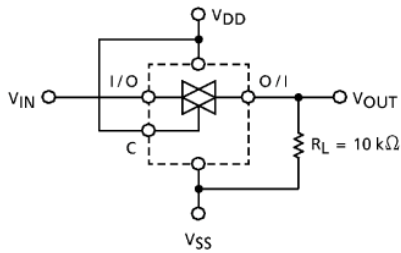


2. t_{pZL} , t_{pZH} , t_{pLZ} , t_{pHZ}

CONTROL-O/I

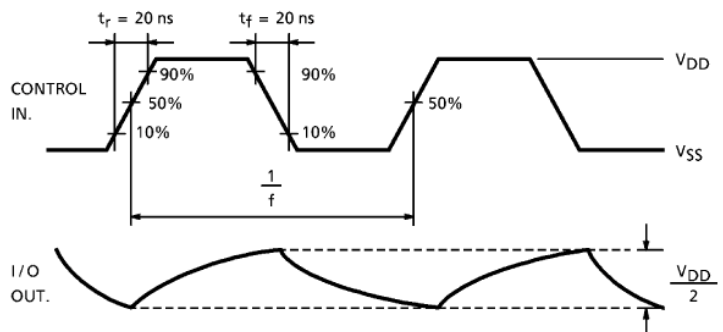
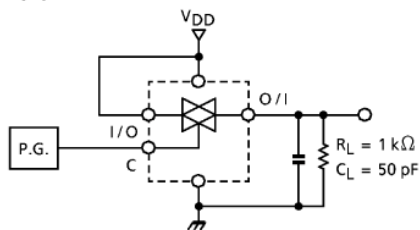


3. RON

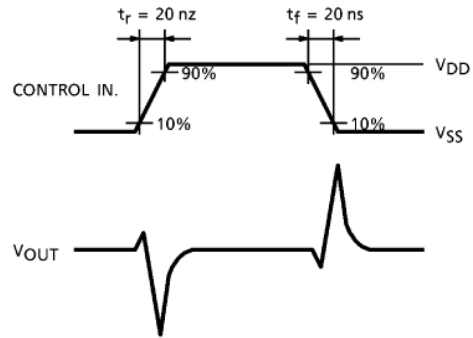
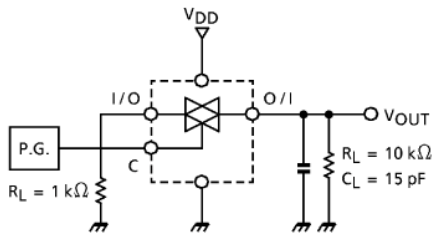


$$R_{ON} = 10 \times \frac{(V_{IN} - V_{OUT})}{V_{OUT}} \text{ (k}\Omega\text{)}$$

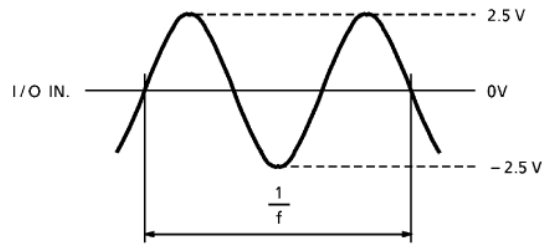
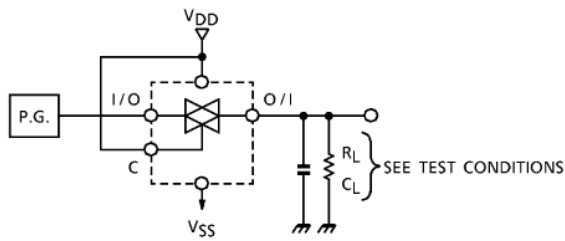
4. $f_{MAX}(C)$



5. CROSSTALK (CONTROL INPUT)

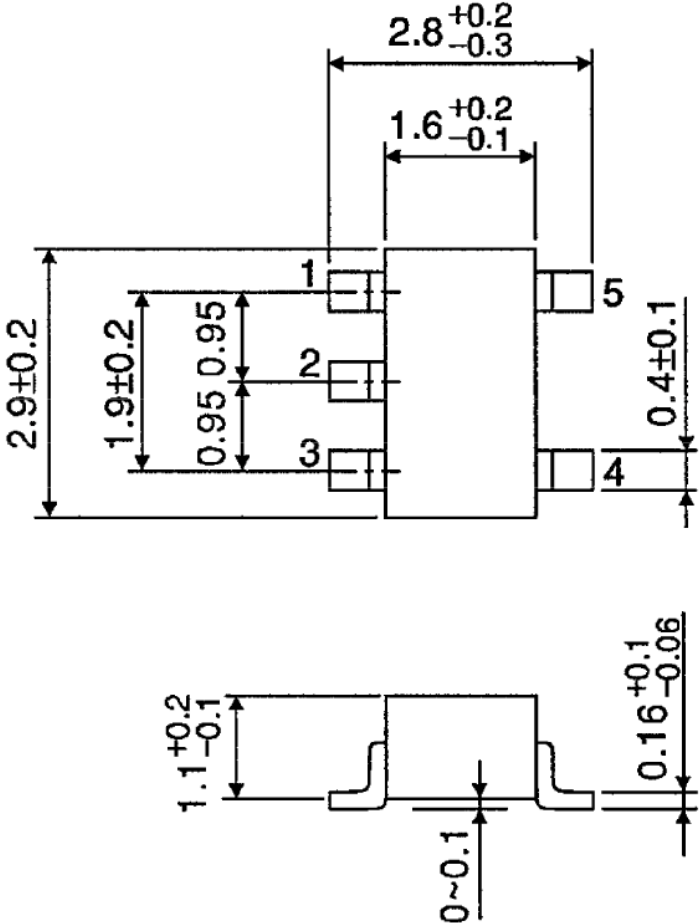


6. TOTAL HARMONIC DISTORTION, f_{MAX} (I/O-O/I), FEEDTHROUGH (SWITCH OFF)



PACKAGE DIMENSIONS
SSOP5-P-0.95

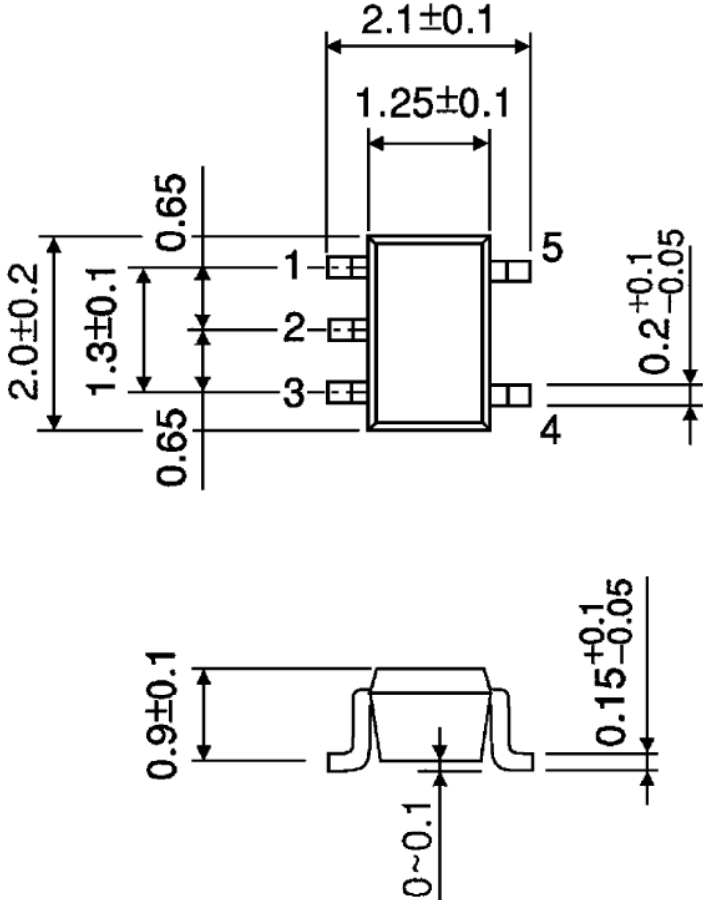
Unit : mm



Weight : 0.016 g (Typ.)

PACKAGE DIMENSIONS
SSOP5-P-0.65A

Unit : mm



Weight : 0.006 g (Typ.)

RESTRICTIONS ON PRODUCT USE

20070701-EN GENERAL

- The information contained herein is subject to change without notice.
- TOSHIBA is continually working to improve the quality and reliability of its products. Nevertheless, semiconductor devices in general can malfunction or fail due to their inherent electrical sensitivity and vulnerability to physical stress. It is the responsibility of the buyer, when utilizing TOSHIBA products, to comply with the standards of safety in making a safe design for the entire system, and to avoid situations in which a malfunction or failure of such TOSHIBA products could cause loss of human life, bodily injury or damage to property.
In developing your designs, please ensure that TOSHIBA products are used within specified operating ranges as set forth in the most recent TOSHIBA products specifications. Also, please keep in mind the precautions and conditions set forth in the "Handling Guide for Semiconductor Devices," or "TOSHIBA Semiconductor Reliability Handbook" etc.
- The TOSHIBA products listed in this document are intended for usage in general electronics applications (computer, personal equipment, office equipment, measuring equipment, industrial robotics, domestic appliances, etc.). These TOSHIBA products are neither intended nor warranted for usage in equipment that requires extraordinarily high quality and/or reliability or a malfunction or failure of which may cause loss of human life or bodily injury ("Unintended Usage"). Unintended Usage include atomic energy control instruments, airplane or spaceship instruments, transportation instruments, traffic signal instruments, combustion control instruments, medical instruments, all types of safety devices, etc.. Unintended Usage of TOSHIBA products listed in this document shall be made at the customer's own risk.
- The products described in this document shall not be used or embedded to any downstream products of which manufacture, use and/or sale are prohibited under any applicable laws and regulations.
- Please contact your sales representative for product-by-product details in this document regarding RoHS compatibility. Please use these products in this document in compliance with all applicable laws and regulations that regulate the inclusion or use of controlled substances. Toshiba assumes no liability for damage or losses occurring as a result of noncompliance with applicable laws and regulations.