

PIEZO TRANSDUCER (Self Drive Type)

External Circuitry Type

Shape

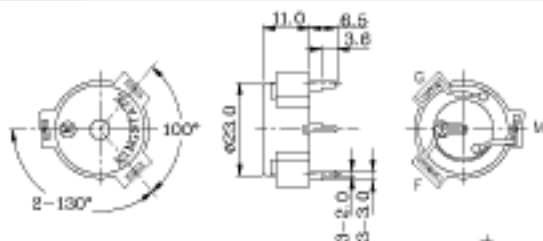
KPE-134



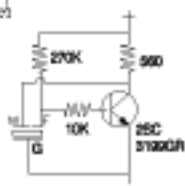
RoHS Compliant Available (eg.KPEG134)

Model Number	KPE-134
Rated Frequency (Hz)	3,600 ± 500
Operating Voltage Range (VDC)	3 ~ 20
Current Consumption (mA)	Max. 12@12VDC
Sound Pressure Level (dB)	Min. 85dB@30cm@12VDC
Tone	Continuous
Operating Temperature (°C)	-30 ~ +85
Storage Temperature (°C)	-40 ~ +95
Weight (Gram)	1.3
Material	ABS UL-94 1/16" HB High Heat (Black)

Dimension



The current consumption and the sound pressure level are measured by using the recommended driving circuit shown in the right.



Tol : ±0.5 Unit : mm

Characteristic

