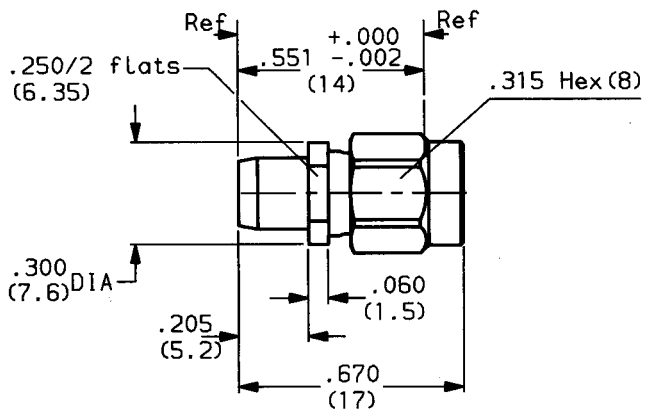


ADAPTER BMA PLUG TO SMA PLUG



MOUNTING HOLE

2.5

WEIGHT 0 oz (..... g)

CABLES : -

CHARACTERISTICS

NOMINAL IMPEDANCE	50	Ω	STANDARDISATION	-
FREQUENCY RANGE	0 - 18	GHz		-
TEMPERATURE RATING	-65 / +125	°C		-
VSWR	1.05+0.005fGHz	Max		-
RF INSERTION LOSS	-	dB Max	CABLE RETENTION	0 Lb Max NA N ₂ Max
VOLTAGE RATING	350	Vrms	CENTER CONTACT RETENTION	
DIELECTRIC WITHSTANDING VOLTAGE	1000	Vrms	Axial force - mating end	6.075 Lb Max 27 N Max
INSULATION RESISTANCE	5000	MΩ	Axial force - opposite end	6.075 Lb Max 27 N Max
HERMETIC SEAL	-	cc/s cm ³ /s	Torque (Max)	- inch.oz 3 cm.N
LEAKAGE (pressurized only)	-	psi kg/cm ²	MATING TORQUE RECOMMENDED	- inch. lb cm.N
-	-	-	-	-
-	-	-	-	-

CONSTRUCTION

CONNECTOR PARTS	MATERIALS	FINISH
Body	Stainless steel	Passivated
Outer contact	Stainless steel	Passivated
Center contact	Brass	Gold over nickel
Insulators	PTFE	-
-	-	-
-	-	-
-	-	-
-	-	-
-	-	-

ISSUE	REVISION No	DESCRIPTION	BY	DATE
.
.
.
.

Initiated on 18 04 89
Superseded on ---

The information given here is subject to change without notice. Design changes may be in order to improve the product.



Mouser Electronics

Authorized Distributor

Click to View Pricing, Inventory, Delivery & Lifecycle Information:

[Radial:](#)

[R191350001](#)