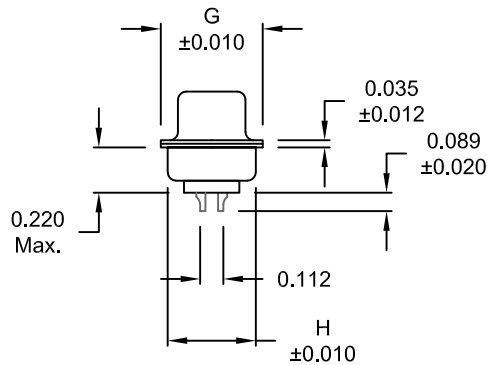
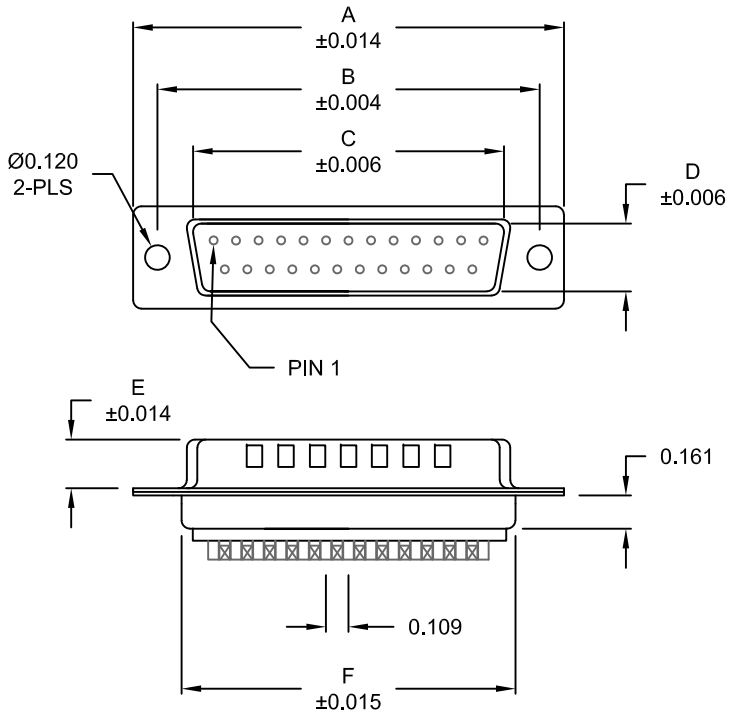


DESCRIPTION: MALE - SOLDER CUP / MACHINED - ECONOMY

WILL ACCEPT 26-20 AWG WIRE



No. OF PINS	DIMENSIONS							
	A	B	C	D	E	F	G	H
9	1.213	0.984	0.666	0.329	0.236	0.756	0.496	0.427
	30.80	24.99	16.92	8.36	5.99	19.20	12.60	10.85
15	1.541	1.312	0.994	0.329	0.236	1.091	0.496	0.427
	39.15	33.32	25.25	8.36	5.99	27.70	12.60	10.85
25	2.087	1.852	1.534	0.329	0.236	1.618	0.496	0.427
	53.00	47.04	38.96	8.36	5.99	41.10	12.60	10.85
37	2.728	2.500	2.182	0.329	0.236	2.256	0.496	0.427
	69.30	63.50	55.42	8.36	5.99	57.30	12.60	10.85
50	2.638	2.406	2.079	0.436	0.240	2.169	0.602	0.527
	67.00	61.11	52.80	11.07	6.10	55.10	15.30	13.39

172-EYY-10YRYY1

- SERIES \_\_\_\_\_
- POSITIONS \_\_\_\_\_
- E09
  - E15
  - E25
  - E37
  - E50
- GENDER \_\_\_\_\_
- 1 = MALE
- TERMINATION \_\_\_\_\_
- 0 = SOLDER CUP
- SHELL PLATING \_\_\_\_\_
- 2 = TIN (GROUND INDENTS)
  - 3 = NICKEL (GROUND INDENTS)
- RoHS COMPLIANT \_\_\_\_\_
- HARDWARE OPTIONS \_\_\_\_\_
- 00 = NO HARDWARE
  - 01 = .098" CLINCH NUT (SOLDER SIDE)
  - 02 = .236" CLINCH NUT (SOLDER SIDE)
  - 03 = .236" CLINCH NUT (MATING SIDE)
  - 05 = .237" 4-40 BOARD LOCK
  - 91 = .237" 4-40 SPACER/ BOARD LOCK
- PLATING OPTIONS \_\_\_\_\_
- 1 = GOLD FLASH
  - 2 = 30MICRO-INCH GOLD

**MATERIAL:**

SHELL: STEEL, NICKEL OR TIN PLATED  
 INSULATOR: UL 94V-O RATED PA6T  
 PROCESS TEMP.: 260°C  
 CONTACT: BRASS

**ELECTRICAL:**

CURRENT RATING: 5 AMPS  
 CONTACT RESISTANCE: 15 mOhms Max.  
 INSULATION RESISTANCE: 1,000 MOhms min.  
 VOLTAGE: 500VAC FOR 1 MINUTE  
 TEMPERATURE: -55° C TO 125° C

DO NOT SCALE FROM DRAWING



THESE DRAWINGS AND SPECIFICATIONS ARE THE PROPERTY OF NorComp AND SHALL NOT BE REPRODUCED, COPIED OR USED AS THE BASIS FOR THE MANUFACTURE OF SALE OF APPARATUS WITHOUT WRITTEN PERMISSION.

DRAWN: PAM JENKINS		DATE: 11-28-05	
SCALE: NTS	SHEET 1	OF 2	REV 12
DWG NO. 172-EYY-10YRYY1			

RoHS COMPLIANT

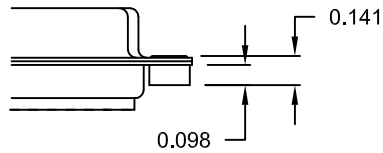
NorComp

DESCRIPTION: CLINCH NUT HARDWARE

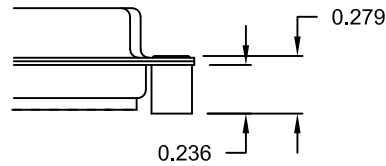
TOLERANCE:  
ALL DIMENSIONS ARE  $\pm 0.010$

ALL CLINCH-NUTS ARE 4-40 INTERNAL THREADS

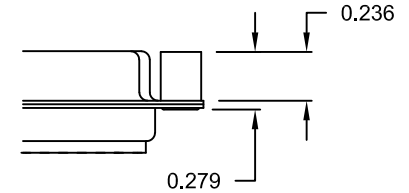
01X ..... 0.098" (SOLDER SIDE)



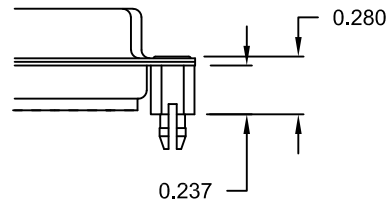
02X ..... 0.236" (SOLDER SIDE)



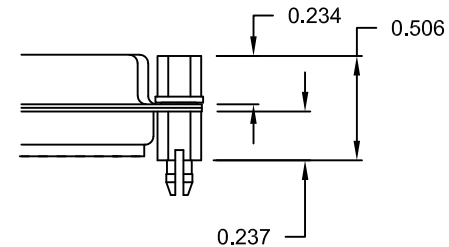
03X..... 0.236" (MATING SIDE)



05X ..... 0.237" (SOLDER SIDE)



91X ..... 0.237" (SOLDER SIDE)



NOTE: 4-40 FEMALE SCREW LOCK IS REMOVABLE

DO NOT SCALE FROM DRAWING



THESE DRAWINGS AND SPECIFICATIONS ARE THE PROPERTY OF NorComp AND SHALL NOT BE REPRODUCED, COPIED OR USED AS THE BASIS FOR THE MANUFACTURE OF SALE OF APPARATUS WITHOUT WRITTEN PERMISSION.

DRAWN:  
PAM JENKINS

DATE:  
11-28-05

NorComp

SCALE: NTS SHEET 2 OF 2 REV 12

DWG NO. 172-EYY-10YRYY1

RoHS COMPLIANT

# Mouser Electronics

Authorized Distributor

Click to View Pricing, Inventory, Delivery & Lifecycle Information:

## NorComp:

<a href="#"><u>172-E50-103R021</u></a>	<a href="#"><u>172-E50-103R011</u></a>	<a href="#"><u>172-E50-103R031</u></a>	<a href="#"><u>172-E25-103R021</u></a>	<a href="#"><u>172-E25-103R011</u></a>	<a href="#"><u>172-E25-103R031</u></a>
<a href="#"><u>172-E15-103R031</u></a>	<a href="#"><u>172-E15-103R011</u></a>	<a href="#"><u>172-E15-103R021</u></a>	<a href="#"><u>172-E25-103R911</u></a>	<a href="#"><u>172-E37-103R911</u></a>	<a href="#"><u>172-E50-103R911</u></a>
<a href="#"><u>172-E09-103R011</u></a>	<a href="#"><u>172-E09-103R031</u></a>	<a href="#"><u>172-E09-103R021</u></a>	<a href="#"><u>172-E37-103R021</u></a>	<a href="#"><u>172-E37-103R011</u></a>	<a href="#"><u>172-E37-103R031</u></a>
<a href="#"><u>172-E50-103R001</u></a>	<a href="#"><u>172-E25-103R001</u></a>	<a href="#"><u>172-E15-103R001</u></a>	<a href="#"><u>172-E15-203R001</u></a>	<a href="#"><u>172-E09-103R001</u></a>	<a href="#"><u>172-E37-103R001</u></a>
<a href="#"><u>172-E09-103R911</u></a>	<a href="#"><u>172-E09-102R001</u></a>	<a href="#"><u>172-E09-102R011</u></a>	<a href="#"><u>172-E09-102R021</u></a>	<a href="#"><u>172-E09-102R031</u></a>	<a href="#"><u>172-E15-102R001</u></a>
<a href="#"><u>172-E15-102R011</u></a>	<a href="#"><u>172-E15-102R021</u></a>	<a href="#"><u>172-E15-102R031</u></a>	<a href="#"><u>172-E25-102R001</u></a>	<a href="#"><u>172-E25-102R011</u></a>	<a href="#"><u>172-E25-102R021</u></a>
<a href="#"><u>172-E25-102R031</u></a>	<a href="#"><u>172-E37-102R001</u></a>	<a href="#"><u>172-E37-102R011</u></a>	<a href="#"><u>172-E37-102R021</u></a>	<a href="#"><u>172-E37-102R031</u></a>	<a href="#"><u>172-E50-102R001</u></a>
<a href="#"><u>172-E50-102R011</u></a>	<a href="#"><u>172-E50-102R021</u></a>	<a href="#"><u>172-E50-102R031</u></a>			