



## DC POWER CONNECTORS: KLDX-SMT2 Series

### Surface Mount DC Power Jack

#### Product Features

- 2.0mm and 2.5mm.
- Built-In DC On/Off Switch
- Laptop and Palm Computers, Portable Modems, Radar Detectors, and Other Portable Device Applications
- Surface Mount
- CSA/NRTL Certified File No. LR78160

#### Performance Specifications

##### Materials and Finish

- Main Housing:** LCP, UL 94V-0 Rated, Black Color
- Back Cover:** PA9T, UL 94V-0 Rated, Black Color
- Center Pin:** Copper Alloy, Nickel Plated
- Contact #1:** Phosphor Bronze, Silver Plated
- Contact #2 and #3:** Brass, Silver Plated

#### Electrical Characteristics

##### Contact Resistance

##### Before Durability Test

**Between Terminals:** 30 milliohms Max.

**Plug to Contacts:** 50 milliohms Max.

##### After Durability Test

**Between Terminals:** 60 milliohms Max.

**Plug to Contacts:** 100 milliohms Max.

**Rated Voltage:** 24V DC

**Rated Current:** 3.5A

**Insulation Resistance:** 100 Megohms Min. at 500V DC

**Dielectric Withstanding Voltage:** 500V AC RMS for 1 Minute

#### Mechanical Characteristics

**Durability Test:** 5000 Cycles

**Insertion Force:** 0.3kg - 2.0kg

**Extraction Force:** 0.3kg - 2.0kg

**Operating Temperature:** -25°C to +65°C

|                       |                     |                      |                  |
|-----------------------|---------------------|----------------------|------------------|
| 2D Drawing            | IGES                | STEP                 | 3D PDF           |
| Solder Profile        | CofC RoHS Compliant | CofC REACH Compliant | UL Plastic File  |
| Certificate of Origin | Check Stock         | Request a Sample     | Send Us An Email |

#### Generated Part Number

#### Part Number Builder

|                      |                      |                      |
|----------------------|----------------------|----------------------|
| <input type="text"/> | <input type="text"/> | <input type="text"/> |
| Series               | Diameter             | Packing Option       |

#### Series

**KLDX-SMT2-0202** - Surface Mount DC Power Jack

#### Diameter

- A** - 2.0mm Center Pin Diameter
- B** - 2.5mm Center Pin Diameter

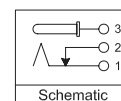
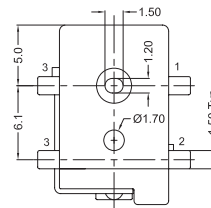
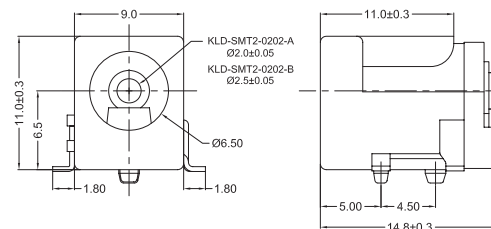
#### Packaging Option

**TR** - Tape and Reel

Contact Kycon for Other Options

#### KLDX-SMT2 Series

Dimensions in mm



# Mouser Electronics

Authorized Distributor

Click to View Pricing, Inventory, Delivery & Lifecycle Information:

[Kycon:](#)

[KLDX-0201-B](#) [KLDX-0201-A](#) [KLDX-0201-BHT-TR](#) [KLDX-0201-AHT](#) [KLDX-0201-AC](#) [KLDX-0201-BC](#) [KLDX-SMT2-0202-ATR](#) [KLDX-SMT2-0202-BTR](#) [KLDX-0201-BHT](#) [KLDVX-SMT02-AKTTR](#)