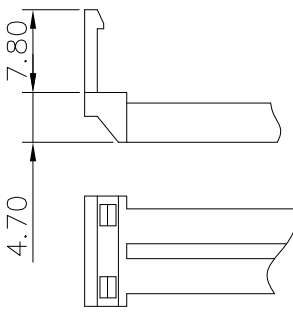
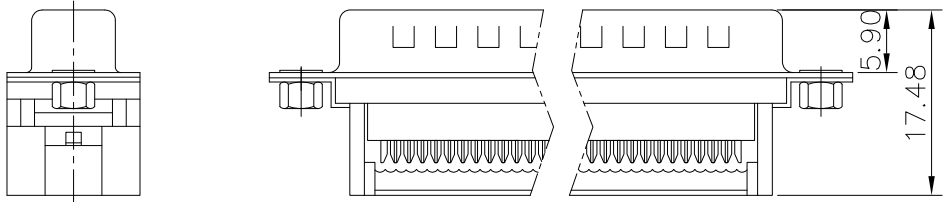
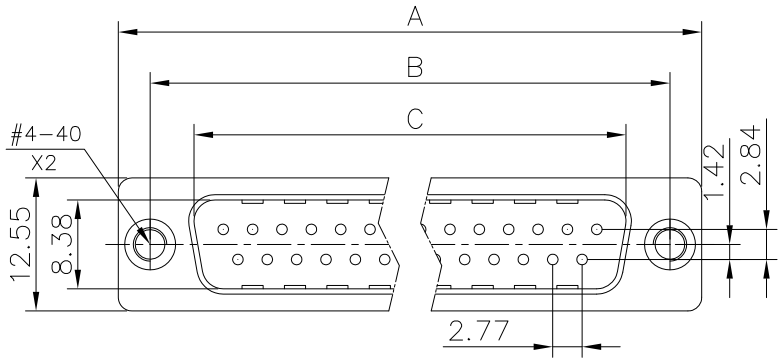


This document is the property of Amphenol Corporation and is delivered on the express condition that it is not to be disclosed, reproduced or used, in whole or in part, for manufacture or sale by anyone other than Amphenol Corporation without its prior consent, & that no right is granted to disclose or to use any information in this document.



Strain Relief

Customer drawing



Nb OF CONTACTS	A	B	C
09	30.84	24.99	16.92
15	39.24	33.32	25.50
25	53.04	47.04	38.96
37	69.32	63.50	55.42

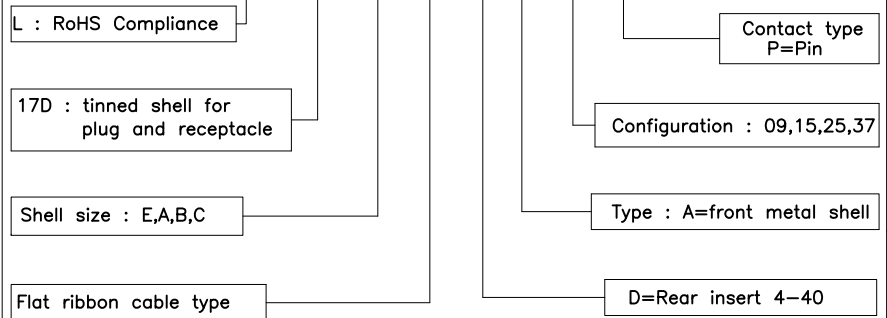
REVISIONS				
SYM	ECN	DESCRIPTION	DATE	APPROVED
1			11/28/08	

D-SUB TECHNICAL DATA

SHELL : Steel, 100u"min tin over 50u"min nickel
 BODY : Glass filled thermoplastic.
 Flame retardant to UL94 V-0 color black
 CONTACTS : Brass, Gold flash over 1.25um (50u") min nickel on mating
 100u" min. tin over 50u" min. nickel on crimping area
 REAR INSERT : Brass, nickel plated.
 ELECTRICAL : Voltage rating : 250 V RMS at 60 Hz.
 Current rating 1A
 Insulation resistance >1000 M Ohms
 Contact resistance 20 mOhms max.
 CLIMATIC : Temperature range -55°C up to 125°C
 MARKING : Amphenol...(Series No.)
 Commercial reference
 Manufacturing date

PRODUCT CODE

L 17D X FR D A XX P



UNLESS OTHERWISE SPECIFIED TOLERANCES		APPROVAL		DATE
U.S.	METRIC	DRAWN	Checked	11/28/08
.X +/-	0.4	Christina.cui		
.XX +/-	0.30			
.XXX +/-	0.20	Checked	lik.wang	11/28/08
FRACTIONS +/-	2'			
ANGLES +/-				
FOR MATERIALS AND FINISHES SEE NOTES		DRAWING FILE :		
REMOVE SHARP EDGES		ANGLE OF PROJECTION		
DIMENSIONS				
U.S.	INCHES			
METRIC	MM			

Amphenol®		
TITLE IDC Flat Cable D-Sub Series		
SIZE	DRAWING NO.	REV.
A4	C L17DXFRDAXXP	1
SCALE	NONE	SHEET 1 OF 1