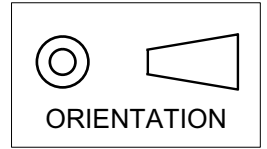


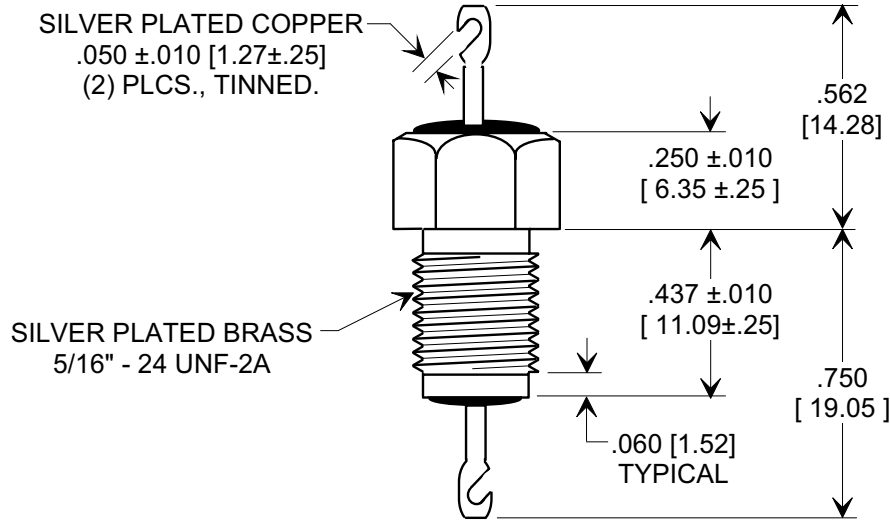
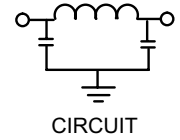
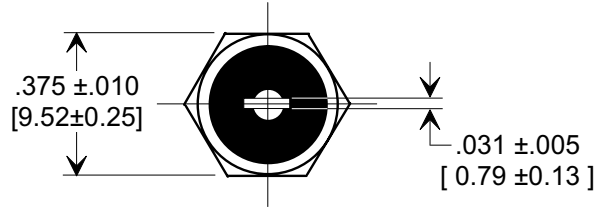
MARKETING SALES DRAWING

DIMENSIONS IN INCHES - DO NOT SCALE THIS DRAWING
DIMENSIONS IN METRIC - []

This drawing is the property of Tusonix, Inc., and may not be used, reproduced, published or disclosed to others without expressed authorization by Tusonix Inc.



Electrical Testing
per Tusonix standard
test plans and Mil-Std-202
Test Methods.



NOTES:

1. TUSONIX STANDARD PART NUMBER: 4206-001.
TUSONIX RoHS COMPLIANT PART NUMBER: 4206-001 LF.
CUSTOMER MUST SPECIFY STANDARD OR RoHS PART NUMBER WHEN ORDERING.
2. LEAD FINISH: STANDARD PART #: SILVER PLATED COPPER ALLOY WITH 60/40 SOLDER DIPPED ENDS.
RoHS PART #: SILVER PLATED COPPER ALLOY WITH 95.5 Sn/3.8 Ag/0.7 Cu, SOLDER DIPPED ENDS.
3. PART MARKING: TRADEMARK AND VARIATION NUMBER ON HEX FLATS.
STANDARD PART: BLACK INK. RoHS PART: GREEN INK.
4. SUPPLIED WITH SILVER PLATED HEX NUT AND INTERNAL TOOTH LOCK WASHER.

3000 MIN.	1000	500	25 A	10 G Ω	2400 VDC	10	55	70	70
	85 °C	125 °C				10 MHz	100 MHz	1 GHz	10 GHz
CAP. (pF)	WORKING VOLTAGE DC (V)		CURRENT dc (A)	I.R. MIN. @ 100 (VDC.)	DWV	MINIMUM NO LOAD INSERTION LOSS (dB) AT 25°C PER MIL-STD -220			

X-2015 Rev-0

REVISION RECORD Original Release C.O.	0	RDN TO COMP FMT & DIM. .562 WAS "A" & NOTE 1 REVISED. ADDED SIL PLAT (2) PLCS. S.M. 06-08-99	5	19990607-3-01 PUT INTO STD. FORMAT. S.M. 05-06-04	6	20040506-1-01 ADDED NOTES 1-3. S.M. 08-02-05	7	20050719-2-02 NOTE 1 CORRECTED P/N. S.M. 02-13-06	8	20060210-2-01 DWV WAS 1400. S.M. 04-19-06	9	20060417-2-02 DWV WAS 1200VAC/2400VDC. S.M. 12-05-06-06	10	20061205-1-01	TOLERANCES unless otherwise specified 2 PLC. DECIMAL ± 3 PLC. DECIMAL ± .031 [0.79] ANGLES ± TUSONIX TUCSON, ARIZONA	Title EMI LOW PASS FILTER Drawn S.M. 06-08-99 Scale 2 X Approved E.F. 06-08-99	A	4206-001
---	----------	--	----------	--	----------	---	----------	--	----------	--	----------	--	-----------	---------------	--	--	----------	-----------------

Mouser Electronics

Authorized Distributor

Click to View Pricing, Inventory, Delivery & Lifecycle Information:

[CTS:](#)

[4206-016](#)

[Tusonix / CTS:](#)

[4206-001LF](#) [4206-502](#)