

# Data sheet Actuator.

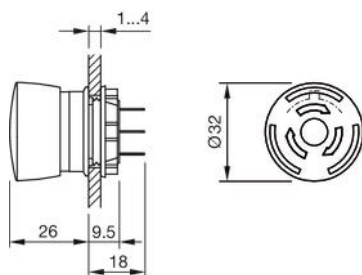
## Part No.: 84-5341.2B20

### Technical data



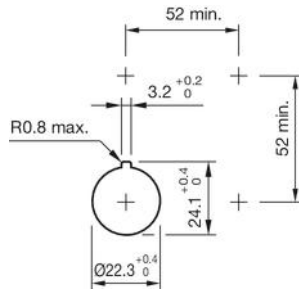
Terminal	Plug-in terminal
Illuminative colour	Red
Operating voltage	5 - 30 V DC
Operation current	9,7 - 12,4 mA
Lens illumination	illuminative
Lens colour	Red
Lens shape	mushroom-head
Lens material	Plastic
Lens optics	opaque
Housing colour	Yellow
Housing material	Plastic
Weight	0.028 kg
Contacts normally close	2 NC
Contact material	Gold-plated silver
Illumination colour	Red
Material	Plastic
Switching action	Maintained
Switching voltage	250 V
Switching system	Slow-make switching element
Hints	
	<ul style="list-style-type: none"> <li>Twist to unlock clockwise</li> </ul>
Product attributes	
	<ul style="list-style-type: none"> <li>Twist to unlock clockwise, position indication ring green</li> </ul>

### Dimensions



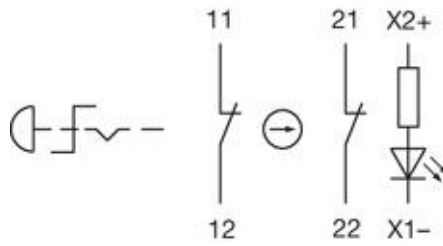
## Mounting cut-outs

---



## Wiring diagrams

---



## Component layouts

---

