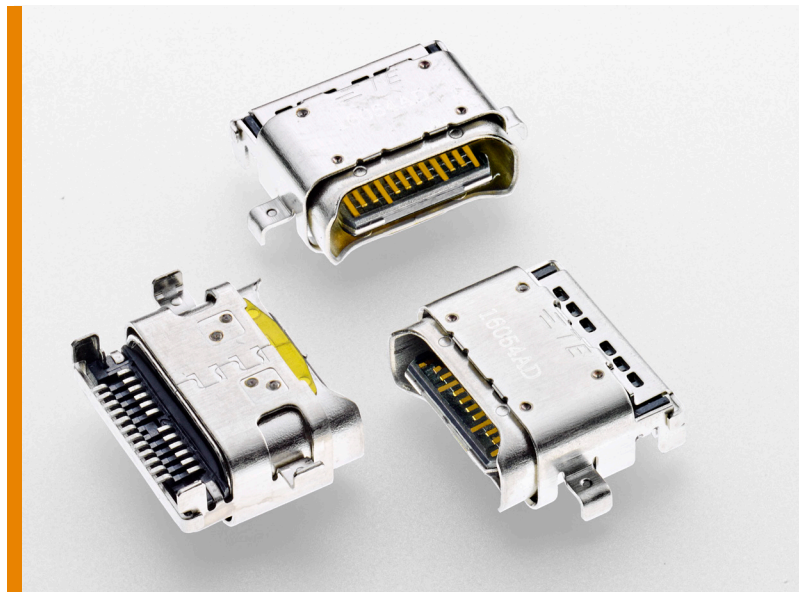


INTRODUCING USB TYPE-C DUAL ROW SMT CONNECTORS WITH SPLASH PROOF OPTION

- Save space with a mid-mount dual row SMT, 0.65mm offset product design
- Help meet the needs of harsh environments with an IPX4-rated splash proof design



TE Connectivity (TE) is expanding our portfolio of USB Type-C connectors to include dual row surface mount (SMT) versions with the option of splash proof protection to further improve the ruggedness of our enhanced receptacle design. With one of the smallest dual row SMT footprints, TE's USB Type-C saves valuable board real-estate.

KEY BENEFITS

- Save space with a mid-mount dual row SMT, 0.65mm offset product design
- Help meet the needs of harsh environments with an IPX4-rated splash proof design
- Provide increased durability with additional board retention features
- Help eliminate unwanted EMI leakage and provide enhanced performance over similar legacy products with industry-leading EMI protection
- Deliver data, power and audio/video through a single connection at faster speeds
- Enable easy, reliable mating with reversible design
- Allow backward compatibility to other USB connectors using converter cables or adaptors
- Support high speed data transfer with USB 2.0 (480 mbps), USB 3.1 gen 1 (5 Gbps) and USB 3.1 gen 2 (10 Gbps) plugs
- Increase power capability up to 100W at 20V

MATERIALS

- Contact: Copper alloy
- Housing: Thermoplastic, UL 94 V-0
- Shell: Stainless steel

LEARN MORE

[USB Type-C Connectors Overview Page](#)

[USB Type-C Video](#)

[USB Type-C Product Flyer](#)

[USB Type-C Customer Presentation](#)

[USB Type-C Parts List](#)

USB Type-C, AMP, TE Connectivity, TE and TE connectivity (logo) are trademarks.

APPLICATIONS

- Factory Automation
- Industrial Machinery
- Data Center
- Medical Devices
- A/V Digital Switches
- Power Packs and Chargers
- Automotive Infotainment
- Equipment
- Lighting
- Tablets
- PCs and Laptops
- Wearables
- Smart Phones

ELECTRICAL

- Voltage Rating: 30 V Max.
- Current Rating:
 - VBUS pins: 5A Max, GND pins: 6.25A
 - VCONN pins: 1.25A Max
 - Signal pins contact: 0.25A Min
- Low Level Contact Resistance: 40 m Ω (Max) initial for VBUS, GND and all other contacts. Maximum change (delta) of +10 m Ω after environmental stresses.
- Dielectric Withstanding Voltage: 100VAC (rms) for 1 minute at sea level

MECHANICAL

- Insertion Force: Between 5N and 20N
- Extraction Force: Within the range of 8 N to 20 N, measured after a preconditioning of five insertion/extraction cycles; extraction force shall be within the range of 6 N to 20 N after 10,000 insertion/extraction cycles.
- Durability: 10,000 cycles

STANDARDS & SPECIFICATIONS

- TE 108-99061 Design Objective Specification
- IPX4 splash proof rated

